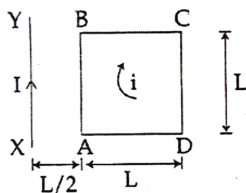


1. From a disc of radius  $R$  and mass  $M$ , a circular hole of diameter  $R$ , whose rim passes through the centre is cut. What is the moment of inertia of the remaining part of the disc about a perpendicular axis, passing through the centre?

- (1)  $15 MR^2/32$                       (2)  $13 MR^2/32$   
(3)  $11 MR^2/32$                       (4)  $9 MR^2/32$ .

2. A square loop ABCD carrying a current  $i$ , is placed near and coplanar with a long straight conductor XY carrying a current  $I$ , the net force on the loop will be:



- (1)  $\frac{2\mu_0 li}{3\pi}$                                   (2)  $\frac{\mu_0 li}{2\pi}$   
(3)  $\frac{2\mu_0 liL}{3\pi}$                                 (4)  $\frac{\mu_0 liL}{2\pi}$

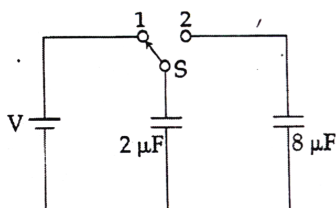
3. The magnetic susceptibility is negative for:

- (1) diamagnetic material only  
(2) paramagnetic material only  
(3) ferromagnetic material only  
(4) paramagnetic and ferromagnetic materials

4. A siren emitting a sound of frequency  $800\text{Hz}$  moves away from an observer towards a cliff at a speed of  $15\text{ms}^{-1}$ . Then, the frequency of sound that the observer hears in the echo reflected from the cliff is :

(Take velocity of sound in air =  $330\text{ms}^{-1}$ )

- (1)  $765\text{Hz}$                                 (2)  $800\text{Hz}$   
(3)  $838\text{Hz}$                                 (4)  $885\text{Hz}$ .



- 5.

A capacitor of  $2\mu\text{F}$  is charged as shown in the diagram. When the switch  $S$  is turned to position 2, the percentage of its stored energy dissipated is :

- (1)  $0\%$                                       (2)  $20\%$   
(3)  $75\%$                                       (4)  $80\%$

6. In a diffraction pattern due to a single slit of width 'a', the first minimum is observed at an angle  $30^\circ$  when light of wavelength  $5000\text{\AA}$  is incident on the slit. The first secondary maximum is observed at an angle of:

- (1)  $\sin^{-1}\left(\frac{1}{4}\right)$                               (2)  $\sin^{-1}\left(\frac{2}{3}\right)$   
(3)  $\sin^{-1}\left(\frac{1}{2}\right)$                               (4)  $\sin^{-1}\left(\frac{3}{4}\right)$

7. At what height from, the surface of earth the gravitation potential and the value of  $g$  are  $-5.4 \times 10^7\text{J kg}^{-2}$  and  $6.0\text{ms}^{-2}$  respectively ? Take the radius of earth as  $6400\text{km}$  :

- (1)  $2600\text{km}$                                 (2)  $1600\text{km}$   
(3)  $1400\text{km}$                                 (4)  $2000\text{km}$ .

8. Out of the following options which one can be used to produce a propagating electromagnetic wave?

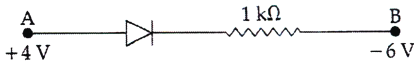
- (1) A charge moving at constant velocity  
(2) A stationary charge  
(3) A chargeless particle  
(4) An accelerating charge

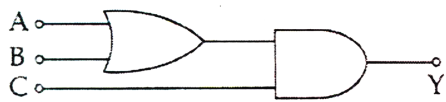
9. Two identical charged spheres suspended from a common point by two massless strings of lengths  $l$ , are initially at a distance  $d$  ( $d < l$ ) apart because of their mutual repulsion. The charges begin to leak from both the spheres at a constant rate. As a result, the spheres approach each other with a velocity  $v$ . Then  $v$  varies as a function of the distance  $x$  between the spheres, as :

- (1)  $v \propto x^2$                                   (2)  $v \propto x$   
(3)  $v \propto x^{-\frac{1}{2}}$                                 (4)  $v \propto x^{-1}$

10. A uniform rope of length  $L$  and mass  $m_1$  hangs vertically from a rigid support. A block of mass  $m_2$  is attached to the free end of the rope. A transverse pulse of wavelength  $\lambda_1$  is produced at the lower end of the rope. The wavelength of the pulse when it reaches the top of the rope is  $\lambda_2$ . The ratio  $\lambda_2/\lambda_1$  is :

- (1)  $\sqrt{\frac{m_1}{m_2}}$                                   (2)  $\sqrt{\frac{m_1 + m_2}{m_2}}$   
(3)  $\sqrt{\frac{m_2}{m_1}}$                                   (4)  $\sqrt{\frac{m_1 + m_2}{m_1}}$

11. A refrigerator works between 4°C and 30°C. It is required to remove 6.0.0 calories of heat every second in order to keep the temperature of the refrigerated space constant. The power required is : (Take 1 cal = 4.2Joules)
- (1) 2.365 W (2) 23.65 W  
(3) 236.5 W (4) 2365 W.
12. An air column, closed at one end and open at the other, resonates with a tuning fork when the smallest length of the column is 5.0 cm. The next larger length of the column resonating with the same tuning fork is:
- (1) 66.7 cm (2) 100 cm  
(3) 150 cm (4) 200 cm.
13. Consider the junction diode as ideal. The value of current flowing through AB is
- 
- (1) 0 A (2) 10<sup>-2</sup>A  
(3) 10<sup>-1</sup> A (4) 10<sup>-3</sup> A.
14. The charge flowing through a resistance R varies with time t as Q= at – bt<sub>2</sub>, where a and b are positive constants. The total heat produced in R is:
- (1)  $\frac{a^3R}{6b}$  (2)  $\frac{a^3R}{3b}$   
(3)  $\frac{a^3R}{2b}$  (4)  $\frac{a^3R}{b}$
15. A black body is at a temperature of 5760 K. The energy of radiation emitted by the body a wavelength 250 nm is U<sub>1</sub>, at wavelength 500 nm is U<sub>2</sub> and that at 1000 nm is U<sub>3</sub>. Wien's constant b = 2.88 × 10<sup>6</sup> nmK. Which of the following is correct?
- (1) U<sub>1</sub> = 0 (2) U<sub>3</sub> = 0  
(3) U<sub>1</sub> > U<sub>2</sub> (4) U<sub>2</sub> > U<sub>1</sub>.
16. Coefficient of linear expansion of brass and steel rods are α<sub>1</sub> and α<sub>2</sub>. Lengths of brass and steel rod are l<sub>1</sub> and l<sub>2</sub> respectively. If (l<sub>2</sub> – l<sub>1</sub>) is maintainer same at all temperatures, which one of the following, relations holds good?
- (1) α<sub>1</sub>l<sub>2</sub> = α<sub>2</sub>l<sub>1</sub> (2) α<sub>1</sub>l<sub>2</sub><sup>2</sup> = α<sub>2</sub>l<sub>1</sub><sup>2</sup>  
(3) α<sub>1</sub><sup>2</sup>l<sub>2</sub> = α<sub>2</sub><sup>2</sup>l<sub>1</sub> (4) α<sub>1</sub>l<sub>1</sub> = α<sub>2</sub>l<sub>2</sub>
17. A npn transistor is connected in common emitter configuration in a given amplifier. A load resistance of 800Ω is connected in the collector circuit and the voltage drop across it is 0.8 V. If the current amplification factor is 0.96 and the input resistance of the circuit is 192 Ω, the voltage gain and the power gain of the amplifier will respectively be :
- (1) 4,3.84 (2) 3.69,3.84  
(3) 4,4 (4) 4,3.69
18. The intensity at the maximum in a Young's double slit experiment is 10. Distance between two slits is d = 5λ, where λ is the wavelength of light used in the experiment. What will be the intensity in front of one of the slits on the screen placed at a distance D = 10d?
- (1) I<sub>0</sub> (2)  $\frac{I_0}{4}$   
(3)  $\frac{3}{4}I_0$  (4)  $\frac{I_0}{2}$
19. A uniform circular disc of radius 50 cm at rest is free to turn about an axis which is perpendicular to its plane and passes through its centre. It is subjected to a torque which produces a .constant angular acceleration of 2.0 rad s<sup>-2</sup>. Its net acceleration in ms<sup>-2</sup> at the end of 2.0 s is approximately:
- (1) 8.0 (2) 7.0  
(3) 6.0 (4) 3.0
20. An electron of mass m and a photon have same energy E. The ratio of de-Broglie wavelengths associated with them is :
- (1)  $\frac{1}{c} \left( \frac{E}{2m} \right)^{\frac{1}{2}}$  (2)  $\left( \frac{E}{2m} \right)^{\frac{1}{2}}$   
(3) c(2mE)<sup>1/2</sup> (4)  $\frac{1}{c} \left( \frac{2m}{E} \right)^{\frac{1}{2}}$   
(c being velocity of light)
21. A disk and a sphere of same radius but different masses roll off on two inclined planes of the same altitude and length. Which one of the two objects gets to the bottom of the plane first :
- (1) Disk  
(2) Sphere  
(3) Both reach at the same time  
(4) Depends on their masses
22. The angle of incidence for a ray of light at a refracting surface of a prism is 45°. The angle of prism is 60°. If the ray suffers minimum deviation through the prism, the angle of minimum deviation and reflective index of the material of the prism respective are :
- (1) 45°;  $\frac{1}{\sqrt{2}}$  (2) 30°;  $\sqrt{2}$   
(3) 45°;  $\sqrt{2}$  (4) 30°;  $\frac{1}{\sqrt{2}}$
23. When an a-particle of mass 'm' having with velocity 'v' bombards on a heavy nucleus of charge 'Ze', its distance of closest approach from the nucleus depends on m as :
- (1)  $\frac{1}{m}$  (2)  $\frac{1}{\sqrt{m}}$   
(3)  $\frac{1}{m^2}$  (4) m

24. A particle of mass 10 g moves along a circle of radius 6.4 cm with a constant tangential acceleration. What is the magnitude of this acceleration if the kinetic energy of the particle becomes equal to  $8 \times 10^{-4}$  J by the end of the second revolution after the beginning of the motion :
- (1) 0.1 m/s<sup>2</sup>                      (2) 0.15 m/s<sup>2</sup>  
 (3) 0.18 m/s<sup>2</sup>                      (4) 0.2 m/s<sup>2</sup>.
25. The molecules of a given mass of a gas have r.m.s. velocity of 200 ms<sup>-1</sup> at 27°C and  $1.0 \times 10^5$  Nm<sup>-2</sup> pressure. When the temperature and pressure of the gas are respectively, 127°C and  $0.05 \times 10^5$  Nm<sup>-2</sup>, the r.m.s. velocity of its molecules :
- (1)  $100\sqrt{2}$                       (2)  $\frac{400}{\sqrt{3}}$   
 (3)  $\frac{100\sqrt{2}}{3}$                       (4)  $\frac{100}{3}$
26. A long straight wire of radius a carries a steady current I. The current is uniformly distributed over its cross-section. The ratio of the magnetic fields a B and B', at radial distances a/2 and 2a respectively, from the axis of the wire is:
- (1)  $\frac{1}{4}$                       (2)  $\frac{1}{2}$   
 (3) 1                      (4) 4
27. A particle moves so that its position vector is given by  $\vec{r} = \cos \omega \hat{x} + \sin \omega \hat{y}$ . Where  $\omega$  is a constant. Which of the following is true :
- (1) Velocity and acceleration both are perpendicular to  $\vec{r}$   
 (2) Velocity and acceleration both are parallel to  $\vec{r}$   
 (3) Velocity is perpendicular to  $\vec{r}$  and acceleration is directed towards the origin.  
 (4) Velocity is perpendicular to  $\vec{r}$  and acceleration is directed away from the origin.
28. What is the minimum velocity with which a body of mass m must enter a vertical loop of radius R so,that it can complete the loop :
- (1)  $\sqrt{gR}$                       (2)  $\sqrt{2gR}$   
 (3)  $\sqrt{3gR}$                       (4)  $\sqrt{5gR}$
29. When a metallic surface is illuminated with radiation of wavelength  $\lambda$ , the stopping potential is V. If the same surface is illuminated with radiation of wavelength  $2\lambda$ , the stopping potential is V/4. The threshold wavelength for the metallic surface is :
- (1)  $\frac{5}{2}\lambda$                       (2)  $3\lambda$   
 (3)  $4\lambda$                       (4)  $5\lambda$
30. A gas is compressed isothermally to half its initial volume. The same gas is compressed separately through an adiabatic process until its volume is again reduced to half. Then:
- (1) Compressing the gas isothermally will require more work to be done.  
 (2) Compressing the gas through adiabatic process will require more work to be done  
 (3) Compressing the gas isothermally or adiabatically will require the same amount of work.  
 (4) Which of the case (whether compression through isothermal or through adiabatic process) requires more work will depends upon the atomicity of the gas
31. A potentiometer wire is 100cm long and a constant potential difference is maintained across it. Two cells are connected in series. first to support one another and then in opposite direction. The balance points are obtained at 50 cm-and 10 cm from the positive end of the wire in the two cases. The ratio of emf's is:
- (1) 3 : 4                      (2) 3 : 2  
 (3) 5 : 1                      (4) 5 : 4.
32. A astronomical telescope has objective and eyepiece of focal lengths 40 cm and 4 cm respectively. To view an object 200 cm away from the objective, the lenses must be separated by a distance:
- (1) 37.3 cm                      (2) 46.0 cm  
 (3) 50.0 cm                      (4) 54.0 cm.
33. Two non-mixing liquids of densities  $\rho$  and  $n\rho$  ( $n > 1$ ) are put in a container. The height of each liquid is h. A solid cylinder of length L and density d is put in this container. The cylinder floats 'with its axis vertical and length pL ( $\rho < 1$ ) in the denser liquid. The density d is equal :
- (1)  $\{1+(n+1)p\}\rho$                       (2)  $\{2+(n+1)p\}\rho$   
 (3)  $\{2+(n-1)p\}\rho$                       (4)  $\{1+(n-1)p\}\rho$
34. To get output 1 for the following circuit, the correct choice for the input is
- 
- (1) A = 0, B = 1, C = 0  
 (2) A = 1, B = 0, C = 0  
 (3) A = 1, B = 1, C = 0  
 (4) A = 1, B = 0, C = 1
35. A piece of ice falls from a height h so that it melts completely. Only one - quarter of the heat produced is absorbed by the ice and all energy of ice gets converted into heat during its fall, The value of h is : [Latent heat of ice is  $3.4 \times 10^5$  J/kg and  $g = 10$  N/kg]
- (1) 34 km                      (2) 544 km  
 (3) 136 km                      (4) 68 km.

36. The ratio of escape velocity at earth ( $v_e$ ) to the escape velocity at a planet ( $v_p$ ) whose radius and mean density are twice as that of earth is :
- (1) 1 : 2                                      (2) 1 :  $2\sqrt{2}$   
 (3) 1 : 4                                      (4) 1 :  $\sqrt{2}$
37. If the magnitude of sum of two vectors is equal to the magnitude of difference of the two vectors, the angle between these vectors is :
- (1)  $0^\circ$                                       (2)  $90^\circ$   
 (3)  $45^\circ$                                       (4)  $180^\circ$ .
38. Given the value of Rydberg constant is  $10^7 \text{ m}^{-1}$ , the wave number of the last line of the Balmer series in hydrogen spectrum will be :
- (1)  $0.025 \times 10^4 \text{ m}^{-1}$                       (2)  $0.5 \times 10^7 \text{ m}^{-1}$   
 (3)  $0.25 \times 10^7 \text{ m}^{-1}$                       (4)  $2.5 \times 10^7 \text{ m}^{-1}$
39. A body of mass 1 kg begins to move under the action of a time dependent force  $\vec{F} = (2t\hat{i} + 3t^2\hat{j})\text{N}$ , where  $\hat{i}$  and  $\hat{j}$  are unit vectors along x and y axis. What power will be developed by the force at the time t :
- (1)  $(2t^2 + 3t^3) \text{ W}$                       (2)  $(2t^2 + 4t^4) \text{ W}$   
 (3)  $(2t^3 + 3t^4) \text{ W}$                       (4)  $(2t^3 + 3t^6) \text{ W}$
40. An inductor 20 mH, a capacitor 50  $\mu\text{F}$  and a resistor 40 $\Omega$  are connected in series across a source of emf  $V = 10 \sin 340 t$ . The power loss in A.C circuit is :
- (1) 0.51 W  
 (2) 0.67 W  
 (3) 0.76 W  
 (4) 0.89 W.
41. If the velocity of a particle is  $v = At + Bt^2$ , where A and B are constants, then the distance travelled by it between  $t = 1 \text{ s}$  to  $t = 2 \text{ s}$  :
- (1)  $\frac{3}{2}A + 4B$                                       (2)  $3A + 7B$   
 (3)  $\frac{3}{2}A + \frac{7}{3}B$                                       (4)  $\frac{A}{2} + \frac{B}{3}$
42. A long solenoid has 1000 turns. When a current of 4A flows through it, the magnetic flux linked with each turn of the solenoid is  $4 \times 10^{-3} \text{ Wb}$ . The self-inductance of the solenoid is :
- (1) 4 H                                      (2) 3 H  
 (3) 2 H                                      (4) 1 H.
43. A small signal voltage  $V_{\text{et}} = V_0 \sin \omega t$  across an ideal capacitor C
- (1) Current I (t), lags voltage V (t) by  $90^\circ$   
 (2) Over a full cycle the capacitor C does not consume any energy from the voltage source.  
 (3) Current I (t), is in phase with voltage V (t)  
 (4) Current I (t), lags voltage V (t) by  $180^\circ$
44. Match the corresponding entries of column 1 with column 2. [Where m is the magnification produced by the mirror]
- | Column 1               | Column 2           |
|------------------------|--------------------|
| (A) $m = -2$           | (a) Convex mirror  |
| (B) $m = -\frac{1}{2}$ | (b) Concave mirror |
| (C) $m = +2$           | (c) Real image     |
| (D) $m = +\frac{1}{2}$ | (d) Virtual image  |
- (1) A  $\rightarrow$  b and c; B  $\rightarrow$  b and c; C  $\rightarrow$  b and d; D  $\rightarrow$  a and d  
 (2) A  $\rightarrow$  a and c; B  $\rightarrow$  a and d; C  $\rightarrow$  a and b; D  $\rightarrow$  c and d  
 (3) A  $\rightarrow$  a and d; B  $\rightarrow$  b and c; C  $\rightarrow$  b and d; D  $\rightarrow$  b and c  
 (4) A  $\rightarrow$  c and d; B  $\rightarrow$  b and d; C  $\rightarrow$  b and c; D  $\rightarrow$  a and d
45. A car is negotiating a curved road of radius R. The road is banked at an angle  $\theta$ . The coefficient of friction between the tyres of the car and the road is  $\mu_s$ . The maximum safe velocity on this road is :
- (1)  $\sqrt{gR^2 \frac{\mu_s + \tan \theta}{1 - \mu_s \tan \theta}}$   
 (2)  $\sqrt{gR \frac{\mu_s + \tan \theta}{1 - \mu_s \tan \theta}}$   
 (3)  $\sqrt{\frac{g \mu_s + \tan \theta}{R (1 - \mu_s \tan \theta)}}$   
 (4)  $\sqrt{\frac{g \mu_s + \tan \theta}{R^2 (1 - \mu_s \tan \theta)}}$



Reg. No. 2149

# New Light Institute

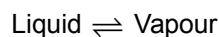
The Finest Institute For Medical Entrance Exams.

## CHEMISTRY NEET-2016 (i) (UNSOLVED)

46. Consider the molecules  $\text{CH}_4$ ,  $\text{NH}_3$  and  $\text{H}_2\text{O}$ . Which of the give statements is false :
- (1) The H–C–H bond angle in  $\text{CH}_4$ , the H–N–H bond angle in  $\text{NH}_3$ , and the H–O–H bond angle in  $\text{H}_2\text{O}$  are all greater than  $90^\circ$ .
  - (2) The H–O–H bond angle in  $\text{H}_2\text{O}$  is larger than the H–C–H bond angle in  $\text{CH}_4$
  - (3) The H–O–H bond angle in  $\text{H}_2\text{O}$  is smaller then the H–N–H bond angle in  $\text{NH}_3$
  - (4) The H–C–H bond angle in  $\text{CH}_4$  is larger than the H–N–H bond angle in  $\text{NH}_3$
47. In the reaction
- $$\text{H}-\text{C}\equiv\text{C}\text{H} \xrightarrow[(2) \text{CH}_3\text{CH}_2\text{Br}]{(1) \text{NaNH}_2 / \text{liq. NH}_3} \text{X} \xrightarrow[(2) \text{CH}_3\text{CH}_2\text{Br}]{(1) \text{NaNH}_2 / \text{liq. NH}_3} \text{Y}$$
- X and Y are :
- (1) X=1-Butyne; Y=3-Hexyne
  - (2) X=2-Butyne; Y=3-Hexyne
  - (3) X=2-Butyne; Y=2-Hexyne
  - (4) X=1-Butyne; Y=2-Hexyne
48. Among the following, the correct order of acidity is:
- (1)  $\text{HClO}_3 < \text{HClO}_4 < \text{HClO}_2 < \text{HClO}$
  - (2)  $\text{HClO} < \text{HClO}_2 < \text{HClO}_3 < \text{HClO}_4$
  - (3)  $\text{HClO}_2 < \text{HClO} < \text{HClO}_3 < \text{HClO}_4$
  - (4)  $\text{HClO}_4 < \text{HClO}_2 < \text{HClO} < \text{HClO}_3$
49. The rate of a first-order reaction is  $0.04 \text{ mol l}^{-1} \text{ s}^{-1}$  at 10 seconds and  $0.03 \text{ mol l}^{-1} \text{ s}^{-1}$  at 20 seconds after initiation of the reaction. The half-life period of the reaction is :
- (1) 24.1 s
  - (2) 34.1 s
  - (3) 44.1 s
  - (4) 54.1 s
50. Which one of the following characteristics is associated with adsorption :
- (1)  $\Delta G$  is negative but  $\Delta H$  and  $\Delta S$  are positive
  - (2)  $\Delta G$ ,  $\Delta H$  and  $\Delta S$  all are negative
  - (3)  $\Delta G$  and  $\Delta H$  are negative but  $\Delta S$  is positive
  - (4)  $\Delta G$  and  $\Delta S$  are negative but  $\Delta H$  is positive
51. In which of the following options the order of arrangement does not agree with the variation c property indicated against it :
- (1)  $\text{Al}^{3+} < \text{Mg}^{2+} < \text{Na}^+ < \text{F}^-$  (increasing ioni size)
  - (2)  $\text{B} < \text{C} < \text{N} < \text{a}$  (increasing first ionisation enthalpy)
  - (3)  $\text{I} < \text{Br} < \text{Cl} < \text{F}$  (increasing electron gain enthalpy)
  - (4)  $\text{Li} < \text{Na} < \text{K} < \text{Rb}$  (increasing metallic radiu
52. Which of the following statements is false?
- (1)  $\text{Mg}^{2+}$  ions form a complex with ATP.
  - (2)  $\text{Ca}^{2+}$  ions are important in blood clotting.
  - (3)  $\text{Ca}^{2+}$  ions are not important in maintaing the regular beating of the heart.
  - (4)  $\text{Mg}^{2+}$  ions are important in the green pal of plants.
53. Which of the following statements about hydrogen is incorrect ?
- (1) Hydrogen has three isotopes of which tritium is the most common.
  - (2) Hydrogen never acts as cation in ionic salts.
  - (3) Hydronium ion,  $\text{H}_3\text{O}^+$  exists freely in solution.
  - (4) Dihydrogen does not act as a reducing agent.
54. The correct statement regarding a carbonyl compound with a hydrogen atom on its alphacarbon, is :
- (1) a carbonyl compound with a hydrogen atom on its alpha-carbon never equilibrates with its corresponding enol.
  - (2) a carbonyl compound with a hydrogen atom on its alpha-carbon rapidly equilibrates with its corresponding enol and this process is known as aldehyde-ketone equilibration.
  - (3) a carbonyl compound with a hydrogen atom on its alpha-carbon rapidly equilibrates with its corresponding enol and this process is known as carbonylation.
  - (4) a carbonyl compound with a hydrogen atom on its alpha-carbon rapidly equilibrates with its corresponding enol and this process is known as keto-enol tautomerism.
55. MY and  $\text{NY}_3$ , two nearly insoluble salts, have the same  $K_{sp}$  values of  $6.2 \times 10^{-13}$  at room temperature. Which statement would be true in regard to MY and  $\text{NY}_3$  :
- (1) The molar solubilities of MY and  $\text{NY}_3$  in water are identical.
  - (2) The molar solubility of MY in water is less than that of  $\text{NY}_3$ .
  - (3) The salts MY and  $\text{NY}_3$  are more soluble in 0.5 M KY than in pure water.
  - (4) The addition of the salt of KY to solution of MY and  $\text{NY}_3$  will have no effect on their solubilities.
56. In a protein molecule various amino adds are linked together by :
- (1)  $\alpha$  - glycosidic bond
  - (2)  $\beta$  - glycosidic bond
  - (3) peptide bond
  - (4) dative bond

57. Natural rubber has :
- (1) All cis-configuration
  - (2) All trans-configuration
  - (3) Alternate cis - and trans-configuration
  - (4) Random cis - and trans-configuration
58. Match items of Column I with the items of Column II and assign the correct code:
- | Column I                    | Column II             |
|-----------------------------|-----------------------|
| a. Cyanide process          | i. Ultrapure Ge       |
| b. Froth floatation process | ii. Dressing of ZnS   |
| c. Electrolytic reduction   | iii. Extraction of Al |
| d. Zone refining            | iv. Extraction of Au  |
|                             | v. Purification of Ni |
- (a) (b) (c) (d)
- (1) (iv) (ii) (iii) (i)
  - (2) (ii) (iii) (i) (v)
  - (3) (i) (ii) (iii) (iv)
  - (4) (iii) (iv) (v) (i)
59. Which one of the following statements is correct when  $\text{SO}_2$  is passed through acidified  $\text{K}_2\text{Cr}_2\text{O}_7$  solution :
- (1) The solution turns blue
  - (2) The solution is decolourized.
  - (3)  $\text{SO}_2$  is reduced.
  - (4) Green  $\text{Cr}_2(\text{SO}_4)_3$  is formed.
60. The electronic configurations of Eu (Atomic No. 63) Gd (Atomic No. 64) and Tb (Atomic No. 65) are :
- (1)  $[\text{Xe}]4f^76s^2$ ,  $[\text{Xe}]4f^86s^2$  and  $[\text{Xe}]4f^95d^16s^2$
  - (2)  $[\text{Xe}]4f^65d^16s^2$ ,  $[\text{Xe}]4f^75d^16s^2$  and  $[\text{Xe}]4f^86s^2$
  - (3)  $[\text{Xe}]4f^65d^16s^2$ ,  $[\text{Xe}]4f^75d^16s^2$  and  $[\text{Xe}]4f^85d^16s^2$
  - (4)  $[\text{Xe}]4f^76s^2$ ,  $[\text{Xe}]4f^75d^16s^2$  and  $[\text{Xe}]4f^86s^2$
61. Two electrons occupying the same orbital distinguished by :
- (1) Principal quantum number
  - (2) Magnetic quantum number
  - (3) Azimuthal quantum number
  - (4) Spin quantum number
62. When copper is heated with conc.  $\text{HNO}_3$  it produces:
- (1)  $\text{Cu}(\text{NO}_3)_2$  and  $\text{NO}_2$
  - (2)  $\text{Cu}(\text{NO}_3)_2$  and  $\text{NO}$
  - (3)  $\text{Cu}(\text{NO}_3)_2$ ,  $\text{NO}$  and  $\text{NO}_2$
  - (4)  $\text{Cu}(\text{NO}_3)_2$  and  $\text{N}_2\text{O}$
63. Which of the following reagents would distinguish cis-cyclopenta-1, 2-diol from the trans-isomer :
- (1) Acetone
  - (2) Ozone
  - (3)  $\text{MnO}_2$
  - (4) Aluminium isopropoxide
64. The correct thermodynamic conditions for the spontaneous reaction at all temperatures is :
- (1)  $\Delta H < 0$  and  $\Delta S = 0$
  - (2)  $\Delta H > 0$  and  $\Delta S < 0$
  - (3)  $\Delta H < 0$  and  $\Delta S > 0$
  - (4)  $\Delta H < 0$  and  $\Delta S < 0$
65. Lithium has a bcc structure. Its density is  $530 \text{ kg m}^{-3}$  and its atomic mass is  $6.94 \text{ g mol}^{-1}$ , Calculate the edge length of a unit cell of Lithium metal. ( $N_A = 6.02 \times 10^{23} \text{ mol}^{-1}$ )
- (1) 154 pm
  - (2) 352 pm
  - (3) 527 pm
  - (4) 264 pm
66. Which one of the following orders is correct for the bond dissociation enthalpy of halogen molecules :
- (1)  $\text{I}_2 > \text{Br}_2 > \text{O}_2 > \text{F}_2$
  - (2)  $\text{Cl}_2 > \text{Br}_2 > \text{F}_2 > \text{I}_2$
  - (3)  $\text{Br}_2 > \text{I}_2 > \text{F}_2 > \text{O}_2$
  - (4)  $\text{F}_2 > \text{Cl}_2 > \text{Br}_2 > \text{I}_2$
67. Which of the following is an analgesic :
- (1) Novalgin
  - (2) Penicillin
  - (3) Streptomycin
  - (4) Chloromycetin
68. Equal moles of hydrogen and oxygen gases are placed in a container with a pin-hole through which both can escape. What fraction of the oxygen escapes in the time required for one-half of the hydrogen to escape?
- (1) 1/8
  - (2) 1/4
  - (3) 3/8
  - (4) 1/2
69. Consider the nitration of benzene using mixed conc.  $\text{H}_2\text{SO}_4$  and  $\text{HNO}_3$ . If a large amount of  $\text{KHSO}_4$  is added to the mixture, the rate of nitration will be :
- (1) faster
  - (2) slower
  - (3) unchanged
  - (4) doubled
70. Predict the correct order among the following :
- (1) lone pair - lone pair > lone pair - bond pair > bond pair - bond pair
  - (2) lone pair - lone pair > bond pair - bond pair > lone pair - bond pair
  - (3) bond pair - bond pair > lone pair - bond pair > lone pair - lone pair
  - (4) lone pair - bond pair > bond pair - bond pair > lone pair - lone pair
71. The product obtained as a result of a reaction of nitrogen with  $\text{CaC}_2$  is :
- (1)  $\text{Ca}(\text{CN})_2$
  - (2)  $\text{CaCN}$
  - (3)  $\text{CaCN}_3$
  - (4)  $\text{Ca}_2\text{CN}$

72. Consider the following liquid - vapour equilibrium.



Which of the following relations is correct :

$$(1) \frac{d \ln G}{dT^2} = \frac{\Delta H_v}{RT^2}$$

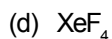
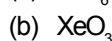
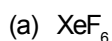
$$(2) \frac{d \ln P}{dT} = \frac{-\Delta H_v}{RT}$$

$$(3) \frac{d \ln P}{dT^2} = \frac{-\Delta H_v}{T^2}$$

$$(4) \frac{d \ln P}{dT} = \frac{\Delta H_v}{RT^2}$$

73. Match the compounds given in column I with the hybridisation and shape given in column II and mark the correct option.

Column I



Column II

(i) distorted octahedral

(ii) square planar

(iii) pyramidal

(iv) square pyramidal

Code:

(a) (b) (c) (d)

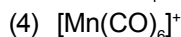
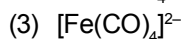
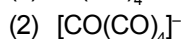
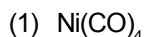
(1) (i) (iii) (iv) (ii)

(2) (i) (ii) (iv) (iii)

(3) (iv) (iii) (i) (ii)

(4) (iv) (i) (ii) (iii)

74. Which of the following has longest C–O bond length. (Free C–O bond length in CO is 1.128 Å.)



75. The pressure of  $\text{H}_2$  required to make the potential of  $\text{H}_2$  - electrode zero in pure water at 298 K is :

(1)  $10^{-14}$  atm

(2)  $10^{-12}$  atm

(3)  $10^{-10}$  atm

(4)  $10^{-4}$  atm

76. The addition of a catalyst during a chemical reaction alters which of the following quantities :

(1) Entropy

(2) Internal energy

(3) Enthalpy

(4) Activation energy

77. The ionic radii of  $\text{A}^+$  and  $\text{B}^-$  ions are  $0.98 \times 10^{-10}$  m and  $1.81 \times 10^{-10}$  m. The coordination number of each ion in AB is :

(1) 6

(2) 4

(3) 8

(4) 2

78. Which is the correct statement for the given acids :

(1) Phosphinic acid is a diprotic acid while phosphonic acid is a monoprotic acid.

(2) Phosphinic acid is a monoprotic acid while phosphonic acid is a diprotic acid.

(3) Both are triprotic acids

(4) Both are diprotic acids

79. Fog is a colloidal solution of :

(1) Liquid in gas

(2) Gas in liquid

(3) Solid in gas

(4) Gas in gas

80. Which of the following statements about the composition of the vapour over an ideal 1:1 molar mixture of benzene and toluene is correct? Assume that the temperature is constant at  $25^\circ\text{C}$  (Given Vapour Pressure Data at  $25^\circ\text{C}$ , benzene = 12.8 kPa toluene = 3.85 kPa)

(1) The vapour will contain a higher percentage of benzene.

(2) The vapour will contain a higher percentage toluene.

(3) The vapour will contain equal amounts of benzene and toluene

(4) Not enough information is given to make prediction

81. The correct statement regarding the comparison staggered and eclipsed conformations of ethane,

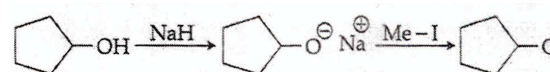
(1) The staggered conformation of ethane is less stable than eclipsed conformation, because staggered conformation has torsional strain

(2) The eclipsed conformation of ethane is most stable than staggered conformation, because eclipsed conformation has no torsional strain

(3) The eclipsed conformation of ethane is most stable than staggered conformation even though the eclipsed conformation has torsional strain.

(4) The staggered conformation of ethane is most stable than eclipsed conformation, because staggered conformation has no torsional strain.

82. The reaction



can be classified as :

(1) Williamson ether synthesis reaction

(2) Alcohol formation reaction

(3) Dehydration reaction

(4) Williamson alcohol synthesis reaction

83. The product formed by the reaction of an aldehyde with a primary amine is :

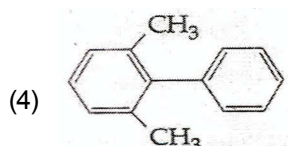
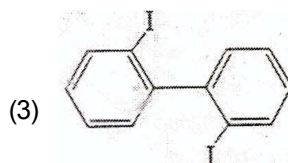
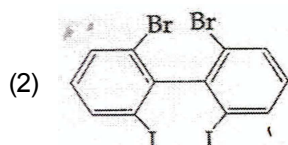
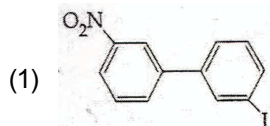
(1) Schiff base

(2) Ketone

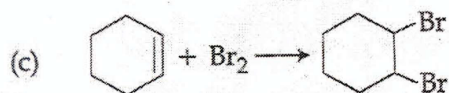
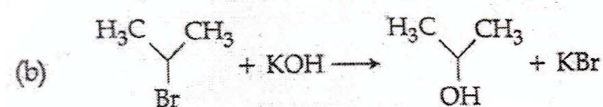
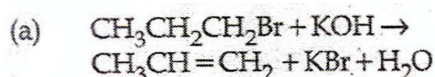
(3) Carboxylic acid

(4) Aromatic acid

84. Which of the following biphenyls is optically active?



85. For the following reactions :



Which of the following statements is correct?

- (1) (a) and (b) are elimination reactions and (c) is addition reaction
  - (2) (a) is elimination, (b) is substitution and (c) is addition reaction
  - (3) (a) is elimination, (b) and (c) are substitution reactions.
  - (4) (a) is substitution, (b) and (c) are addition reactions.
86. At 100°C the vapour pressure of a solution of 6.5 g of a solute in 100 g water is 732 mm. If  $K_b = 0.52$ , the boiling point of this solution will be :
- (1) 101°C
  - (2) 100°C
  - (3) 102°C
  - (4) 103°C

87. The correct statement regarding RNA and DNA, respectively is :

- (1) The sugar component in RNA is arabinose and the sugar component in DNA is 2'-deoxyribose.
  - (2) The sugar component in RNA is ribose and the sugar component in DNA is 2' -deoxyribose.
  - (3) The sugar component in RNA is arabinose and the sugar component in DNA is ribose.
  - (4) The sugar component in RNA is 2' -deoxyribose and the sugar component in DNA is arabinose.
88. The correct statement regarding the basicity of arylamines is:

- (1) Arylamines are generally less basic than alkylamines because 'the nitrogen lone-pair electrons are delocalized by interaction with the aromatic ring  $\pi$  electron system.
- (2) Arylamines are generally more basic than alkylamines because the nitrogen lone-pair electrons are not delocalized by interaction with the aromatic ring  $\pi$  electron system
- (3) Arylamines are generally more basic than alkyl amines because of aryl group.
- (4) Arylamines are generally more basic than alkylamines, because the nitrogen atom in arylamines is sp-hybridized.

89. Which one given below is a non-reducing sugar?

- (1) Maltose
  - (2) Lactose
  - (3) Glucose
  - (4) Sucrose
90. The pair of electron in the given carbanion,  $\text{CH}_3\text{C}\equiv\text{C}^-$ , is present in which of the following orbitals :
- (1) 2p
  - (2)  $\text{sp}^3$
  - (3)  $\text{sp}^2$
  - (4) sp





# New Light Institute

The Finest Institute For Medical Entrance Exams.

## NEET (PHASE-I)-2016 (BIOLOGY)

SET : W

91. Gause's principle of competitive exclusion states that:
- (1) More abundant species will exclude the less abundant species through competition.
  - (2) Competition for the same resources excludes species having different food preferences.
  - (3) No two species can occupy the same niche indefinitely for the same limiting resources
  - (4) Larger organisms exclude smaller ones through competition.
92. The two polypeptides of human insulin are linked together by
- (1) Hydrogen bonds
  - (2) Phosphodiester bond
  - (3) Covalent bond
  - (4) Disulphide bridges
93. The coconut water from tender coconut represents
- (1) Endocarp
  - (2) Fleshy mesocarp
  - (3) Free nuclear proembryo
  - (4) Free nuclear endosperm
94. Which of the following statements is wrong for viroids?
- (1) They lack a protein coat
  - (2) They are smaller than viruses
  - (3) They cause infections
  - (4) Their RNA is of high molecular weight
95. Which of the following features is not present in the Phylum-Arthropoda?
- (1) Chitinous exoskeleton
  - (2) Metameric segmentation
  - (3) Parapodia
  - (4) Jointed appendages
96. Which of the following most appropriately describes haemophilia ?
- (1) Recessive gene disorder
  - (2) X-linked recessive gene disorder
  - (3) Chromosomal disorder
  - (4) Dominant gene disorder
97. Emerson's enhancement effect and Red drop have been instrumental in the discovery of
- (1) Photophosphorylation and non-cyclic electron transport
  - (2) Two photosystems operating simultaneously
  - (3) Photophosphorylation and cyclic electron transport
  - (4) Oxidative phosphorylation
98. In which of the following, all three are macronutrients ?
- (1) Boron, zinc, manganese
  - (2) Iron, copper, molybdenum
  - (3) Molybdenum, magnesium, manganese
  - (4) Nitrogen, nickel, phosphorus
99. Name the chronic respiratory disorder caused mainly by cigarette smoking
- (1) Emphysema
  - (2) Asthma
  - (3) Respiratory acidosis
  - (4) Respiratory alkalosis
100. A system of rotating crops with legume or grass pasture to improve soil structure and fertility is called :
- (1) Ley farming
  - (2) Contour farming
  - (3) Strip farming
  - (4) Shifting agriculture
101. Mitochondria and chloroplast are
- (a) Semi-autonomous organelles.
  - (b) Formed by division of pre - existing organelles and they contain DNA but lack protein synthesizing machinery.
- Which one of the following options is correct ?
- (1) Both (a) and (b) are correct
  - (2) (b) is true but (a) is false
  - (3) (a) is true but (b) is false
  - (4) Both (a) and (b) are false
102. In context of Amniocentesis, which of the following statement is incorrect
- (1) It is usually done when a woman is between 14 -16 weeks pregnant.
  - (2) It is used for prenatal sex determination
  - (3) It can be used for detection of Down syndrome.
  - (4) It can be used for detection of Cleft palate.
103. In a chloroplast the highest number of protons are found in :
- (1) Stroma
  - (2) Lumen of thylakoids
  - (3) Inter membrane space
  - (4) Antennae complex
104. Photosensitive compound in human eye is made up of:
- (1) Guanosine and Retinol
  - (2) Opsin and Retinal
  - (3) Opsin and Retinol
  - (4) Transducin and Retinene

105. Spindle fibres attach on to :
- (1) Telomere of the chromosome
  - (2) Kinetochore of the chromosome
  - (3) Centromere of the chromosome
  - (4) Kinetosome of the chromosome
106. Which is the National Aquatic Animal of India ?
- (1) Gangetic shark
  - (2) River dolphin
  - (3) Blue whale
  - (4) Sea - horse
107. Which of the following is required as inducer (s) for the expression of Lac operon?
- (1) Glucose
  - (2) Galactose
  - (3) Lactose
  - (4) Lactose and galactose
108. Which of the following pairs of hormones are not antagonistic (having opposite effects) to each other?
- (1) Parathormone - Calcitonin
  - (2) Insulin - Glucagon
  - (3) Aldosterone - Atrial Natriuretic factor
  - (4) Relaxin - Inhibin
109. Microtubules are the constituents of
- (1) Cilia, Flagella and Peroxisomes
  - (2) Spindle fibres, Centrioles and Cilia
  - (3) Centrioles, Spindle fibres and Chromatin
  - (4) Centrosome Nucleosome and Centrioles
110. A complex of ribosomes attached to a single strand of RNA is known as
- (1) Polysome
  - (2) Polymer
  - (3) Polypeptide
  - (4) Okazaki fragment
111. Fertilization in humans is practically feasible only if:
- (1) The sperms are transported into vagina just after the release of ovum in fallopian tube.
  - (2) The ovum and sperms are transported simultaneously to ampullary - isthmic junction of the fallopian tube. .
  - (3) The ovum and sperms are transported simultaneously to ampullary - isthmic junction of the cervix.
  - (4) The sperms are transported into cervix within 48 hrs of release of ovum in uterus
112. Asthma may be attributed to
- (1) bacterial infection of the lungs
  - (2) allergic reaction of the mast cells in the lungs
  - (3) inflammation of the trachea
  - (4) accumulation of fluid in the lungs
113. The Avena curvature is used for bioassay of :
- (1) ABA
  - (2) GA<sub>3</sub>
  - (3) IAA
  - (4) Ethylene
114. The standard petal of a papilionaceous corolla is also called :
- (1) Carina
  - (2) Pappus
  - (3) Vexillum
  - (4) Corona
115. Tricarpellary, syncarpous gynoecium is found in flowers of:
- (1) Liliaceae
  - (2) Solanaceae
  - (3) Fabaceae
  - (4) Poaceae
116. One of the major components of cell wall of most fungi is :
- (1) Chitin
  - (2) Peptidoglycan
  - (3) Cellulose
  - (4) Hemicellulose
117. Select the incorrect statement:
- (1) FSH stimulates the sertoli cells which help in spermiogenesis.
  - (2) LH triggers ovulation in ovary.
  - (3) LH and FSH decrease gradually during the follicular phase.
  - (4) LH triggers secretion of androgens from the Leydig cells.
118. In meiosis crossing over is initiated at
- (1) Pachytene
  - (2) Leptotene
  - (3) Zygotene
  - (4) Diplotene
119. A tall true breeding garden pea plant is crossed with a dwarf true breeding garden pea plant. When the F<sub>1</sub> plants were selfed the resulting genotypes were in the ratio of :
- (1) 1 : 2 : 1 :: Tall homozygous: Tall heterozygous : Dwarf
  - (2) 1 : 2 : 1 :: Tall heterozygous : Tall homozygous : Dwarf
  - (3) 3 : 1 :: Tall : Dwarf
  - (4) 3 : 1 :: Dwarf : Tall
120. Which of the following is the most important cause of animals and plants being driven to extinction?
- (1) Over - exploitation
  - (2) Alien species invasion
  - (3) Habitat loss and fragmentation
  - (4) Co - extinctions
121. Which one of the following is a characteristic feature of cropland ecosystem?
- (1) Absence of soil organisms
  - (2) Least genetic diversity
  - (3) Absence of weeds
  - (4) Ecological succession

122. Changes in GnRH pulse frequency in females is controlled by circulating levels of
- (1) estrogen and progesterone
  - (2) estrogen and inhibin
  - (3) progesterone only
  - (4) progesterone and inhibin
123. Which of the following is not a feature of the plasmids?
- (1) Independent replication
  - (2) Circular structure
  - (3) Transferable
  - (4) Single - stranded
124. Which of the following features is not present in *Periplaneta americana* ?
- (1) Schizocoelom as body cavity
  - (2) Indeterminate and radial cleavage during embryonic development
  - (3) Exoskeleton composed of N-acetylglucosamine
  - (4) Metamerically segmented body
125. In higher vertebrates, the immune system can distinguish self-cells and non-self. If this property is lost due to genetic abnormality and it attacks self-cells, then it leads to :
- (1) Allergic response
  - (2) Graft rejection
  - (3) Auto-immune disease
  - (4) Active immunity
126. Match the terms in Column I with their description in Column II and choose the correct option:

Column I	Column II
(a) Dominance	(i) Many genes govern a single character
(b) Codominance	(ii) In a heterozygous organism only one allele expresses itself
(c) Pleiotropy	(iii) In a heterozygous organism both alleles express themselves fully
(d) Polygenic inheritance	(iv) A single gene influences many characters

Code :

- (1) (a)-(ii), (b)-(i), (c)-(iv), (d)-(iii)
- (2) (a)-(ii), (b)-(iii), (c)-(iv), (d)-(i)
- (3) (a)-(iv), (b)-(i), (c)-(ii), (d)-(iii)
- (4) (a)-(iv), (b)-(iii), (c)-(i), (d)-(ii)

127. Joint Forest Management Concept was introduced in India during:
- (1) 1960s
  - (2) 1970s
  - (3) 1980s
  - (4) 1990s
128. Pick out the correct statements
- (a) Haemophilia is a sex-linked recessive disease.
  - (b) Down's syndrome is due to aneuploidy.
  - (c) Phenylketonuria is an autosomal recessive gene disorder.
  - (d) Sickle cell anaemia is an X- linked recessive gene disorder
- (1) (a) and (d) are correct.
  - (2) (b) and (d) are correct
  - (3) (a), (c) and (d) are correct
  - (4) (a), (b) and (c) are correct
129. Which one of the following statements is wrong?
- (1) Cyanobacteria are also called blue-green algae
  - (2) Golden algae are also called desmids
  - (3) Eubacteria are also called false bacteria
  - (4) Phycomycetes are also called algal fungi
130. Proximal end of the filament of stamen is attached to the
- (1) Anther
  - (2) Connective
  - (3) Placenta
  - (4) Thalamus or petal
131. Which of the following approaches does not give the defined action of contraceptive

(1)	Barrier methods	Prevent fertilization
(2)	Intra uterine devices	Increase phagocytosis of sperms, suppress sperm motility and fertilizing capacity of sperms
(3)	Hormonal contraceptives	Prevent/retard entry of sperms, prevent ovulation and fertilization
(4)	Vasectomy	Prevents spermatogenesis

132. The taq polymerase enzyme is obtained from
- (1) *Thermus aquaticus*
  - (2) *Thiobacillus ferrooxidans*
  - (3) *Bacillus subtilis*
  - (4) *Pseudomonas putida*
133. Identify the correct statement on 'Inhibin' :
- (1) Inhibits the secretion of LH, FSH and Prolactin.
  - (2) Is produced by granulosa cells in ovary and inhibits the secretion of FSH.
  - (3) Is produced by granulosa cells in ovary and inhibits the secretion of LH.
  - (4) Is produced by nurse cells in testes and inhibits the secretion of LH.

134. Which part of the tobacco plant is infected by *Meloidogyne incognita* ?  
 (1) Flower (2) Leaf  
 (3) Stem (4) Root
135. Antivenom injection contains preformed antibodies while polio drops that are administered into the body contain:  
 (1) Activated pathogens (2) Harvested antibodies  
 (3) Gamma globulin (4) Attenuated pathogens
136. Which one of the following cell organelles is enclosed by a single membrane:  
 (1) Mitochondria (2) Chloroplasts  
 (3) Lysosomes (4) Nuclei
137. Lack of relaxation between successive stimuli in sustained muscle contraction is known as :  
 (1) Spasm (2) Fatigue  
 (3) Tetanus (4) Tonus
138. Which of the following is not a stem modification:  
 (1) Pitcher of *Nepenthes*  
 (2) Thorns of citrus  
 (3) Tendrils of cucumber  
 (4) Flattened structures of *Opuntia*
139. Water soluble pigments found in plant cell vacuoles are:  
 (1) Xanthophylls (2) Chlorophylls  
 (3) Carotenoids (4) Anthocyanins
140. Select the correct statement:  
 (1) Gymnosperms are both homosporous and heterosporous  
 (2) *Salvinia*, *Ginkgo* and *Pinus* all are gymnosperms  
 (3) *Sequoia* is one of the tallest trees  
 (4) The leaves of gymnosperms are not well adapted to extremes of climate
141. Which of the following is not required for any of the techniques of DNA fingerprinting available at present:  
 (1) Polymerase chain reaction  
 (2) Zinc finger analysis  
 (3) Restriction enzymes  
 (4) DNA - DNA hybridization
142. Which type of tissue correctly matches with its location?  

Tissue	Location
(1) Smooth muscle	Wall of intestine
(2) Areolar tissue	Tendons
(3) Transitional epithelium	Tip of nose
(4) Cuboidal epithelium	Lining of stomach

143. A plant in your garden avoids photorespiratory losses, has improved water use efficiency, shows high rates of photosynthesis at high temperatures and has improved efficiency of nitrogen utilisation. In which of the following physiological groups would you assign this plant:  
 (1)  $C_3$  (2)  $C_4$   
 (3) CAM (4) Nitrogen fixer
144. Which of the following structures is homologous to the wing of a bird:  
 (1) Dorsal fin of a Shark (2) Wing of a Moth  
 (3) Hindlimb of Rabbit (4) Flipper of Whale
145. Which of the following characteristic features always holds true for the corresponding group of animals :

(1)	Cartilaginous endoskeleton	Chondrichthyes
(2)	Viviparous	Mammalia
(3)	Possess a mouth with an upper and a lower jaw	Chordata
(4)	3 - chambered heart with one incompletely divided ventricle	Reptilia

146. Which of the following statements is not true for cancer cells in relation to mutations:  
 (1) Mutations in proto-oncogenes accelerate the cell cycle.  
 (2) Mutations destroy telomerase inhibitor.  
 (3) Mutations inactivate the cell control.  
 (4) Mutations inhibit production of telomerase.
147. The amino acid Tryptophan is the precursor for the synthesis of :  
 (1) Melatonin and Serotonin  
 (2) Thyroxine and Triiodothyronine  
 (3) Estrogen and Progesterone  
 (4) Cortisol and Cortisone
148. Following are the two statements regarding the origin of life :  
 (a) The earliest organisms that appeared on the earth were non-green and presumably anaerobes.  
 (b) The first autotrophic organisms were the chemoautotrophs that never released oxygen.  
 Of the above statements which one of the following options is correct ?  
 (1) (a) is correct but (b) is false.  
 (2) (b) is correct but (a) is false.  
 (3) Both (a) and (b) are correct.  
 (4) Both (a) and (b) are false.
149. Reduction in pH of blood will :  
 (1) reduce the rate of heartbeat.  
 (2) reduce the blood supply to the brain.  
 (3) decrease the affinity of hemoglobin with oxygen.  
 (4) release bicarbonate ions by the liver

150. Analogous structures are a result of :
- (1) Divergent evolution
  - (2) Convergent evolution
  - (3) Shared ancestry
  - (4) Stabilizing selection
151. Which of the following is a restriction endonuclease:
- (1) Hind II
  - (2) Protease
  - (3) DNase I
  - (4) RI-lase
152. The term ecosystem was coined by :
- (1) E.P.Odum
  - (2) AG.Tansley
  - (3) E.Haeckel
  - (4) E.Warming
153. Which one of the following statements is wrong:
- (1) Sucrose is a disaccharide.
  - (2) Cellulose is a polysaccharide.
  - (3) Uracil is a pyrimidine.
  - (4) Glycine is a sulphur containing amino acid
154. In bryophytes and pteridophytes, transport of male gametes requires: .
- (1) Wind
  - (2) Insects
  - (3) Birds
  - (4) Water
155. When does the growth rate of a population following the logistic model equal zero? The logistic model given as  $\frac{dN}{dt} = rN(1-N/K)$ :
- (1) when  $N/K$  is exactly one.
  - (2) when  $N$  nears the carrying capacity of - habitat.
  - (3) when  $N/K$  equals zero.
  - (4) when death rate is greater than birth rate
156. Which one of the following statements is not true:
- (1) Tapetum helps in the dehiscence of anther
  - (2) Exine of pollen grains is made up of sporopollenin
  - (3) Pollen grains of many species cause severe allergies
  - (4) Stored pollen in liquid nitrogen can be used in the crop breeding programmes
157. Which of the following would 'appear as the pioneer organisms on bare rocks:
- (1) Lichens
  - (2) Liverworts
  - (3) Mosses
  - (4) Green algae
158. Which one of the following is the starter codon:
- (1) AUG
  - (2) UGA,
  - (3) UM
  - (4) VAG
159. Which one of the following characteristics is not shared by birds and mammals:
- (1) Ossified endoskeleton
  - (2) Breathing using lungs
  - (3) Viviparity
  - (4) Warm blooded nature
160. Nomenclature is governed by certain universal rules, Which one of the following is contrary to the rules of nomenclature:
- (1) Biological names can be written in any language
  - (2) The first word in a biological name represents the genus name, and the second is a specific epithet
  - (3) The names are written in Latin and are italicised
  - (4) When written by hand, the names are to be underlined
161. Blood pressure in the pulmonary artery is :
- (1) same as that in the aorta,
  - (2) more than that in the carotid,
  - (3) more than that in the pulmonary vein.
  - (4) less than that in the venae cavae.
162. Cotyledon of maize grain is called:
- (1) plumule
  - (2) coleorhiza
  - (3) coleoptile
  - (4) scutellum
163. In the stomach, gastric acid is secreted by the:
- (1) gastrin secreting cells
  - (2) parietal cells
  - (3) peptic cells
  - (4) acidic cells
164. Depletion of which gas in the atmosphere can lead to an increased incidence of skin cancers:
- (1) Nitrous oxide
  - (2) Ozone
  - (3) Ammonia
  - (4) Methane
165. Chrysophytes, Euglenoids, Dinoflagellates and Slime moulds are included in the 'kingdom':
- (1) Monera
  - (2) Protista
  - (3) Fungi
  - (4) Animalia
166. Water vapour comes out from the plant leaf through the stomatal opening. Through the same stomatal opening carbon dioxide diffuses into the plant during photosynthesis. Reason out the above statements using one of following options :
- (1) Both processes cannot happen simultaneously.
  - (2) Both processes can happen together because the diffusion coefficient of water and  $\text{CO}_2$  is different.
  - (3) The above processes happen only during night time,
  - (4) One process occurs during day time, and the other at night.
167. In mammals, which blood vessel would normally carry largest amount of urea :
- (1) Renal Vein
  - (2) Dorsal Aorta
  - (3) Hepatic Vein
  - (4) Hepatic Portal Vein
168. Seed formation without fertilization in flowering plants involves the process of :
- (1) Sporulation
  - (2) Budding
  - (3) Somatic hybridization
  - (4) Apomixis

169. Which of the following is wrongly matched in the given table:

	Microbe	Product	Application
(1)	<i>Trichoderma polysporum</i>	Cyclosporin A	immunosuppressive drug
(2)	<i>Monascus purpureus</i>	Statins	lowering of blood cholesterol
(3)	<i>Streptococcus</i>	Streptokinase	removal of clot from blood vessel
(4)	<i>Clostridium butylicum</i>	Lipase	removal of oil stains

170. In a testcross involving F<sub>1</sub> dihybrid flies, more parental - type offspring were produced than the recombinant-type offspring. This indicates:

- (1) The two genes are located on two different chromosomes,
- (2) Chromosomes failed to separate during meiosis, .
- (3) The two genes are linked and present on the same chromosome
- (4) Both of the characters are controlled by more than one gene

171. It is much easier for a small animal to run uphill than for a large animal, because:

- (1) It is easier to carry a small body weight.
- (2) Smaller animals have a higher metabolic rate,
- (3) Small animals have a lower O<sub>2</sub> requirement.
- (4) The efficiency of muscles in large animals is less than in the small animals.

172. Which of the following is not a characteristic feature during mitosis in somatic cells:

- (1) Spindle fibres
- (2) Disappearance of nucleolus
- (3) Chromosome movement
- (4) Synapsis

173. Which of the following statements is not correct :

- (1) Pollen grains of many species can germinate on the stigma of a flower, but only one pollen tube of the same species grows into the style
- (2) Insects that consume pollen or nectar without bringing about pollination are called pollen/nectar robbers.
- (3) Pollen germination and pollen tube grow are regulated by chemical components pollen interacting with those of the pistil.
- (4) Some reptiles have also been reported as pollinators in some plant species .

174. Specialised epidermal cells surrounding the guard cells are called:

- (1) Complementary cells
- (2) Subsidiary cells
- (3) Bulliform cells
- (4) Lenticels

175. Which of the following guards the opening of hepatopancreatic duct into the duodenum:

- (1) Semilunar valve
- (2) Ileocaecal valve
- (3) Pyloric sphincter
- (4) Sphincter of Oddi

176. Stems modified into flat green organs performing the functions of leaves are known as :

- (1) Cladodes
- (2) Phyllodes
- (3) Phylloclades
- (4) Scales

177. The primitive prokaryotes responsible for the production of biogas from the dung of ruminant animals, include the :

- (1) Halophiles
- (2) Thermoacidophiles
- (3) Methanogens
- (4) Eubacteria

178. A river with an inflow of domestic sewage rich in organic waste may result in :

- (1) Drying of the river very soon due to algal bloom.
- (2) Increased population of aquatic food web organisms.
- (3) An increased production of fish due to biodegradable nutrients.
- (4) Death of fish due to lack of oxygen.

179. A cell at telophase stage is observed by a student in a plant brought from the field. He tells his teacher that this cell is not like other cells at telophase stage. There is no formation of cell plate and thus the cell is containing more number of chromosomes as compared to other dividing cells. This would result in:

- (1) Aneuploidy
- (2) Polyploidy
- (3) Somaclonal variation
- (4) Polyteny

180. Atypical fat molecule is made up of :

- (1) Three glycerol molecules and one fatty acid molecule
- (2) One glycerol and three fatty acid molecules
- (3) One glycerol and one fatty acid molecule
- (4) Three glycerol and three fatty acid molecules