



SECTION-A

1. An electric dipole is placed at an angle of 30° with an electric field of intensity $2 \times 10^5 \text{ NC}^{-1}$. It experiences a torque equal to 4 N m . Calculate the magnitude of charge on the dipole, if the dipole length is 2 cm .

- (1) 4 mC
- (2) 2 mC
- (3) 8 mC
- (4) 6 mC

2. A bullet is fired from a gun at the speed of 280 m s^{-1} in the direction 30° above the horizontal. The maximum height attained by the bullet is ($g = 9.8 \text{ ms}^{-2}$, $\sin 30^\circ = 0.5$):

- (1) 1000 m
- (2) 3000 m
- (3) 2800 m
- (4) 2000 m

3. The amount of energy required to form a soap bubble of radius 2 cm from a soap solution = 3.03 N m^{-1}

- (1) $3.01 \times 10^{-4} \text{ J}$
- (2) $50.1 \times 10^{-4} \text{ J}$
- (3) $30.16 \times 10^{-4} \text{ J}$
- (4) $5.06 \times 10^{-4} \text{ J}$

4. The half life of a radioactive substance is 20 minutes. In how much time, the activity of

substance drops to $\left(\frac{1}{16}\right)^{\text{th}}$ of its initial value?

- (1) 60 minutes
- (2) 80 minutes
- (3) 20 minutes
- (4) 40 minutes

5. A 12 V , 60 W lamp is connected to the secondary of a step down transformer, whose primary is connected to ac mains of 220 V . Assuming the transformer to be ideal, what is the current in the primary winding?

- (1) 3.7 A
- (2) 0.37 A
- (3) 0.27 A
- (4) 2.7 A

6. For Young's double slit experiment, two statements are given below:

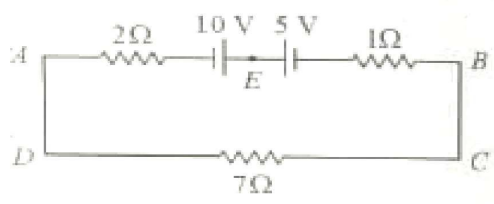
Statement I : If screen is moved away from the plane of slits, angular separation of the fringes remains constant.

Statement II : If the monochromatic source is replaced by another monochromatic source of larger wavelength, The angular separation of fringes decreases.

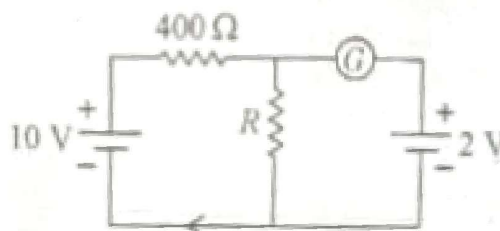
In the light of the above statements, choose the correct answer from the options given below:

- (1) Statement I is true but Statement II is false.
- (2) Statement I is false but Statement II is true
- (3) Both Statement I and Statement II are true.
- (4) Both Statement I and Statement II are false.



7. The potential energy of a long spring when stretched by 2 cm is U . If the spring is stretched by 8 cm, potential energy stored in it will be :
- $8U$
 - $16U$
 - $2U$
 - $4U$
8. In a plane electromagnetic wave travelling in free space, the electric field component oscillates sinusoidally at a frequency of 2.0×10^{10} Hz and amplitude 48 Vm^{-1} . Then the amplitude of oscillating magnetic field is :
- (Speed of light in free space = $3 \times 10^8 \text{ m s}^{-1}$)
- $1.6 \times 10^{-7} \text{ T}$
 - $1.6 \times 10^{-6} \text{ T}$
 - $1.6 \times 10^{-9} \text{ T}$
 - $1.6 \times 10^{-8} \text{ T}$
9. A Carnot engine has an efficiency of 50% when its source is at a temperature 327°C . The temperature of the sink is :
- 100°C
 - 200°C
 - 27°C
 - 15°C
10. A football player is moving southward and suddenly turns eastward with the same speed to avoid an opponent. The force that acts on the player while turning is :
- along north-east
 - along south-west
 - along eastward
 - along northward
11. The magnitude and direction of the current in the following circuit is
- 
- $\frac{5}{9}$ A from A to B through E
 - 1.5 A from B to A through E
 - 0.2 A from B to A through E
 - 0.5 A from A to B through E
12. A metal wire has mass (0.4 ± 0.002) g, radius (0.3 ± 0.001) mm and length (5 ± 0.02) cm. The maximum possible percentage error in the measurement of density will nearly be:
- 1.6%
 - 1.4%
 - 1.2%
 - 1.3%
13. Given below are two statements:
- Statement I** : Photovoltaic devices can convert optical radiation into electricity.
- Statement II** : Zener diode is designed to operate under reverse bias in breakdown region.
- In the light of the above statements, choose the most appropriate answer from the options given below:
- Statement I is correct but Statement II is incorrect
 - Statement I is incorrect but Statement II is correct
 - Both Statement I and Statement II are correct
 - Both Statement I and Statement II are incorrect
14. A full wave rectifier circuit consists of two p-n junction diodes a centre-tapped transformer, capacitor and a load resistance. Which of these components remove the ac ripple from the rectified output?
- Capacitor
 - Load resistance
 - A centre-tapped transformer
 - p-n junction

15. In a series LCR circuit, the inductance L is 10 mH, capacitance C is $1 \mu\text{F}$ and resistance R is 100Ω . The frequency at which resonance occurs is :
- (1) 1.59 rad/s
 - (2) 1.59 kHz
 - (3) 15.9 rad/s
 - (4) 15.9 kHz
16. The ratio of radius of gyration of a solid sphere of mass M and radius R about its own axis to the radius of gyration of the thin hollow sphere of same mass and radius about its axis is :
- (1) 2 : 5
 - (2) 5 : 2
 - (3) 3 : 5
 - (4) 5 : 3
17. An ac source is connected to a capacitor C . Due to decrease in its operating frequency:
- (1) displacement current decreases.
 - (2) capacitive reactance remains constant
 - (3) capacitive reactance decreases
 - (4) displacement current increases
18. The magnetic energy stored in an inductor of inductance $4 \mu\text{H}$ carrying a current of 2 A is :
- (1) 8 mJ
 - (2) 8 μJ
 - (3) 4 μJ
 - (4) 4 mJ
19. The temperature of a gas is -50°C . To what temperature the gas should be heated so that the rms speed is increased by 3 times?
- (1) 3097 K
 - (2) 223 K
 - (3) 669°C
 - (4) 3295°C
20. In hydrogen spectrum, the shortest wavelength in the Balmer series is λ . The shortest-wavelength in the Brackett series is :
- (1) 9λ
 - (2) 16λ
 - (3) 2λ
 - (4) 4λ
21. If $\oint \vec{E} \cdot d\vec{S} = 0$ over a surface, then :
- (1) all the charges must necessarily be inside the surface.
 - (2) the electric field inside the surface is necessarily uniform
 - (3) the number of flux lines entering the surface must be equal to the number of flux lines leaving it.
 - (4) the magnitude of electric field on the surface is constant
22. If the galvanometer G does not show any deflection in the circuit shown, the value of R is given by :



- (1) 100Ω
 - (2) 400Ω
 - (3) 200Ω
 - (4) 50Ω
23. The net magnetic flux through any closed surface is :
- (1) Infinity
 - (2) Negative
 - (3) Zero
 - (4) Positive

24. A vehicle travels half the distance with speed v and the remaining distance with speed $2v$. Its average speed is :

- (1) $\frac{4v}{3}$
 (2) $\frac{3v}{4}$
 (3) $\frac{v}{3}$
 (4) $\frac{2v}{3}$

25. The minimum wavelength of X-rays produced by an electron accelerated through a potential difference of V volts is proportional to:

- (1) $\frac{1}{\sqrt{V}}$
 (2) v^2
 (3) \sqrt{V}
 (4) $\frac{1}{v}$

26. Resistance of a carbon resistor determined from colour codes is $(2200 \pm 5\%)\Omega$. The colour of third band must be :

- (1) Orange
 (2) Yellow
 (3) Red
 (4) Green

27. The errors in the measurement which arise due to unpredictable fluctuations in temperature and voltage supply are :

- (1) Least count errors
 (2) Random errors
 (3) Instrumental errors
 (4) Personal errors

28. The venturi-meter works on :

- (1) The principle of parallel axes
 (2) The principle of perpendicular axes
 (3) Huygen's principle
 (4) Bernoulli's principle

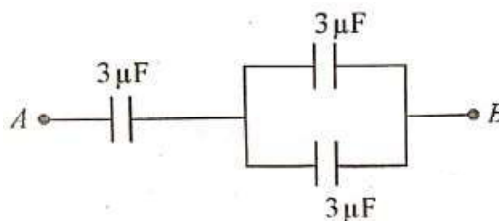
29. The angular acceleration of a body moving along the circumference of a circle is :

- (1) Along the tangent to its position
 (2) Along the axis of rotation
 (3) Along the radius away from centre
 (4) Along the radius towards the centre

30. The work functions of Cesium (Cs), Potassium (K) and Sodium (Na) are 2.14 eV, 2.30 eV and 2.75 eV respectively. If incident electromagnetic radiation has an incident energy of 2.20 eV which of these photosensitive surfaces many emit photoelectrons ?

- (1) K only
 (2) Na only
 (3) Cs only
 (4) Both Na and K

31. The equivalent capacitance of the system shown in the following circuit is :



- (1) $6\ \mu\text{F}$
 (2) $9\ \mu\text{F}$
 (3) $2\ \mu\text{F}$
 (4) $3\ \mu\text{F}$

32. Two bodies of mass m and $9m$ are placed at a distance R . The gravitational potential on the line joining the bodies where the gravitational field equals zero, will be (G = gravitational constant):

- (1) $-\frac{16Gm}{R}$
 (2) $-\frac{20Gm}{R}$
 (3) $-\frac{8Gm}{R}$
 (4) $-\frac{12Gm}{R}$

33. Light travels a distance x in time t_1 in air and $10x$ in time t_2 in another denser medium. What is the critical angle for this medium ?

(1) $\sin^{-1}\left(\frac{t_1}{10t_2}\right)$

(2) $\sin^{-1}\left(\frac{10t_1}{t_2}\right)$

(3) $\sin^{-1}\left(\frac{t_2}{t_1}\right)$

(4) $\sin^{-1}\left(\frac{10t_2}{t_1}\right)$

34. Let a wire be suspended from the ceiling (rigid support) and stretched by a weight W attached at its free end. The longitudinal stress at any point of cross-sectional area A of the wire is :

(1) $W / 2A$

(2) Zero

(3) $2W / A$

(4) W / A

35. The ratio of frequencies of fundamental harmonic produced by an open pipe to that of closed pipe having the same length is :

(1) 1 : 3

(2) 3 : 1

(3) 1 : 2

(4) 2 : 1

36. A horizontal bridge is built across a river. A student standing on the bridge throws a small ball vertically upwards with a velocity 4 ms^{-1} . The ball strikes the water surface after 4s. The height of bridge above water surface is (Take $g = 10 \text{ ms}^{-2}$)

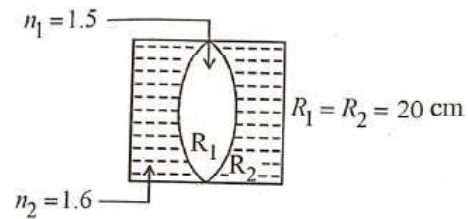
(1) 64 m

(2) 68 m

(3) 56 m

(4) 60 m

37. In the figure shown here, what is the equivalent focal length of the combination of lenses (Assume that all layers are thin) ?



(1) - 100 cm

(2) - 50 cm

(3) 40 cm

(4) - 40 cm

38. The radius of inner most orbit of hydrogen atom is $5.3 \times 10^{-11} \text{ m}$. What is the radius of third allowed orbit of hydrogen atom ?

(1) 1.59 \AA

(2) 4.77 \AA

(3) 0.53 \AA

(4) 1.06 \AA

39. Two thin lenses are of same focal lengths (f), but one is convex and the other one is concave. When they are placed in contact with each other the equivalent focal length of the combination will be :

(1) $f / 2$

(2) Infinite

(3) Zero

(4) $f / 4$

40. A satellite is orbiting just above the surface of the earth with period T . If d is the density of the earth and G is the universal constant of gravitational,

the quantity $\frac{3\pi}{Gd}$ represents :

(1) T^3

(2) \sqrt{T}

(3) T

(4) T^2



41. 10 resistor, each of resistance R are connected in series to a battery of emf E and negligible internal resistance. Then those are connected in parallel to the same battery, the current is increased n time . The value of n is :

- (1) 1
- (2) 1000
- (3) 10
- (4) 100

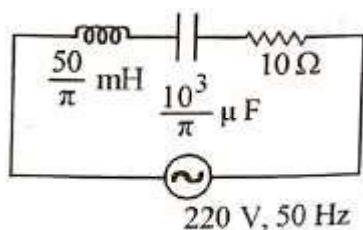
42. A wire carrying a current I along the positive x-axis has length L. it is kept in a magnetic field $\vec{B} = (2\hat{i} + 3\hat{j} - 4\hat{k})$ T. The magnitude of the magnetic force acting on the wire is :

- (1) 5IL
- (2) $\sqrt{3}$ IL
- (3) 3 IL
- (4) $\sqrt{5}$ IL

43. Calculate the maximum acceleration of a moving car so that a body lying on the floor of the car remains stationary. The coefficient of static friction between the body and the floor is 0.15 ($g = 10 \text{ ms}^{-2}$).

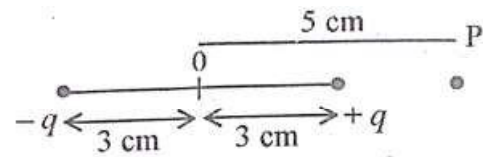
- (1) 1.5 ms^{-2}
- (2) 50 ms^{-2}
- (3) 1.2 ms^{-2}
- (4) 150 ms^{-2}

44. The net impedance of circuit (as shown in figure) will be :



- (1) $5\sqrt{5} \Omega$
- (2) 25Ω
- (3) $10\sqrt{2} \Omega$
- (4) 15Ω

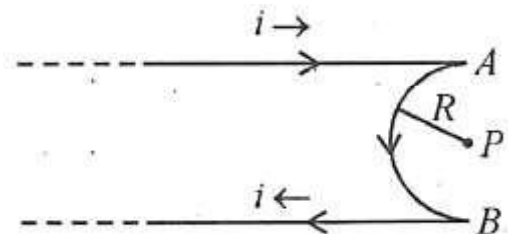
45. An electric dipole is placed as shown in the figure.



The electric potential (in 10^2 V) at point P due to dipole is ($\epsilon_0 =$ permittivity of free space and $\frac{1}{4\pi\epsilon_0} = K$) :

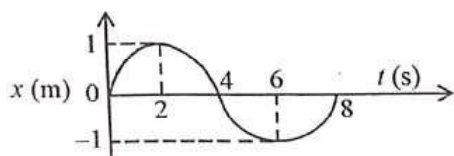
- (1) $\left(\frac{8}{5}\right)qK$
- (2) $\left(\frac{8}{3}\right)qK$
- (3) $\left(\frac{3}{8}\right)qK$
- (4) $\left(\frac{5}{8}\right)qK$

46. A very long conducting wire is bent in a semi-circular shape from A to B as shown in figure. The Magnetic field at point P for steady current configuration is given by :



- (1) $\frac{\mu_0 i}{4R} \left[1 - \frac{2}{\pi}\right]$ pointed away from page
- (2) $\frac{\mu_0 i}{4R} \left[1 - \frac{2}{\pi}\right]$ pointed into the page
- (3) $\frac{\mu_0 i}{4R}$ pointed into the page
- (4) $\frac{\mu_0 i}{4R}$ pointed away from the page

47. The x-t graph of a particle performing simple harmonic motion is shown in the figure. The acceleration of the particle at $t = 2$ s is :



- (1) $\frac{\pi^2}{16} \text{ms}^{-2}$
 (2) $-\frac{\pi^2}{16} \text{ms}^{-2}$
 (3) $\frac{\pi^2}{8} \text{ms}^{-2}$
 (4) $-\frac{\pi^2}{8} \text{ms}^{-2}$
48. The resistance of platinum wire at 0°C is 2Ω and 6.8Ω at 80°C . The temperature coefficient of resistance of the wire is :

- (1) $3 \times 10^{-2} \text{ }^\circ\text{C}^{-1}$
 (2) $3 \times 10^{-1} \text{ }^\circ\text{C}^{-1}$
 (3) $3 \times 10^{-4} \text{ }^\circ\text{C}^{-1}$
 (4) $3 \times 10^{-3} \text{ }^\circ\text{C}^{-1}$
 $3 \times 10^{-2} \text{ }^\circ\text{C}$

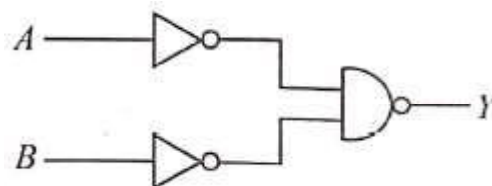
49. A bullet from a gun is fired on a rectangular wooden block with velocity u . When bullet travels 24 cm through the block along its length

horizontally, velocity of bullet becomes $\frac{u}{3}$. Then

if further percentage into the block in the same direction before coming to rest exactly at the other end of the block. The total length of the block is :

- (1) 28 cm
 (2) 30 cm
 (3) 27 cm
 (4) 24 cm

50. For the following logic circuit, the truth table is :



(1)

A	B	Y
0	0	1
0	1	0
1	0	1
1	1	0

(2)

A	B	Y
0	0	0
0	1	0
1	0	0
1	1	1

(3)

A	B	Y
0	0	1
0	1	1
1	0	1
1	1	0

(4)

A	B	Y
0	0	0
0	1	1
1	0	1
1	1	1



[NEET-2023], Test held on 07 May. 2023

Subject : CHEMISTRY

SECTION-A

51. Given below are two statements : one is inbeled as Assertion A and the other is labelled as Reason R :

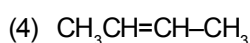
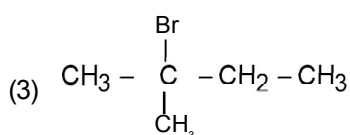
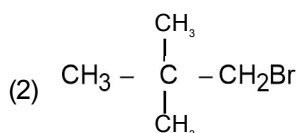
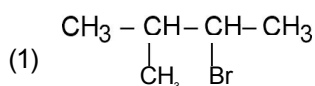
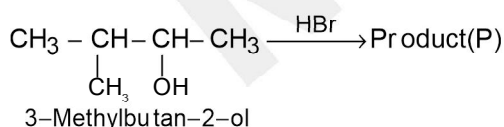
Assertion : A reaction can have zero activation energy.

Reason : The minimum extra amount of energy absorbed by reactant molecules so that their energy becomes equal to thershold value, is called actavation energy.

In the light of the above statements, choose the correct answer from the options given below :

- (1) A is true but R is false
- (2) A is false but R is true
- (3) Both A and R are true and R is the correct explanation of A
- (4) Both A and R are true and R is NOT the correct explanation of A.

52. Consider the following reaction and identify the product (P).



53. The element expected to form largest ion to achieve the nearest noble gas configuration is :

- (1) N
- (2) Na
- (3) O
- (4) F

54. Select the correct statements from the following :

- A. Atoms of all elements are composed of two fundamental particles.
- B. The mass of the electron is 9.10939×10^{-31} kg.
- C. All the isotopes of a given element show same chemical properties.
- D. Protons and electrons are collectively known as nucleons.
- E. Dalton's atomic theory, regarded the atom as an ultimate particle of matter.

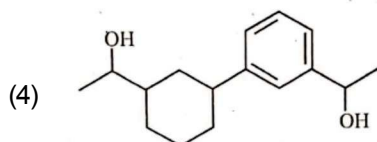
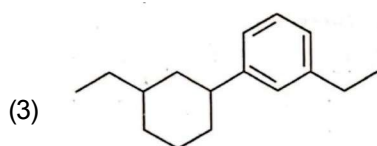
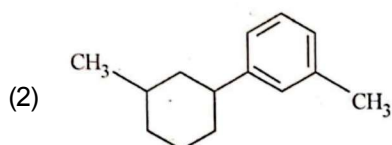
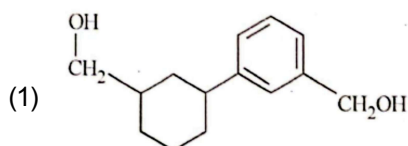
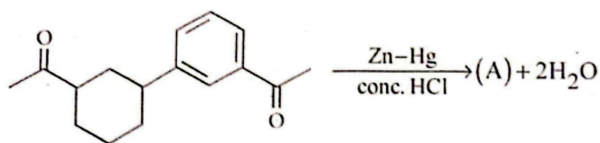
Choose the correct answer from the options given below:

- (1) A and E only
- (2) B, C and E only
- (3) A, B and C only
- (4) C, D and E only

55. Which one of the following statements is correct?

- (1) The bone in human body is an inert and unchanging substance.
- (2) Mg plays roles in neuromuscular function and interneuronal transmission.
- (1) The requirement of Mg and Ca in the human body is estimated to be 0.2 - 0.3 g.
- (4) All enzymes that utilise ATP in phosphate transfer require Ca as the cofactor.

56. Identify product (A) in the following reaction :



57. The conductivity of centimolar solution of KCl at 25°C is $0.0210 \text{ ohm}^{-1} \text{ cm}^{-1}$ and the resistance of the cell containing the solution at 25°C is 60 ohm, The value of cell constant is :

- (1) 1.26 cm^{-1}
- (2) 3.34 cm^{-1}
- (3) 1.34 cm^{-1}
- (4) 3.28 cm^{-1}

58. In Lassaigne's extract of an organic compound, both nitrogen and sulphur are present, which gives blood red colour with Fe^{3+} due to the formation of :

- (1) $[\text{Fe}(\text{CN})_5\text{NOS}]^{4-}$
- (2) $[\text{Fe}(\text{SCN})]^{2+}$
- (3) $\text{Fe}_4[\text{Fe}(\text{CN})_6]_3 \cdot x\text{H}_2\text{O}$
- (4) NaSCN

59. Given below are two statements : one is labelled as Assertion A and the other is labelled as Reason R :

Assertion A : Helium is used to dilute oxygen in diving apparatus.

Reasons R : Helium has high solubility in O_2 .

In the light of the above statements, choose the correct answer from the options given below :

- (1) A is true but R is false
- (2) A is false but R is true
- (3) Both A and R are true and R is the correct explanation of A.
- (4) Both A and R are true and R is NOT the correct explanation of A.

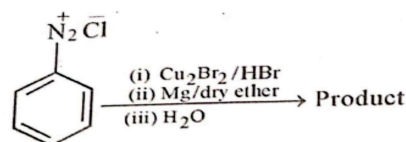
60. Which of the following statements are NOT correct?

- A. Hydrogen is used to reduce heavy metal oxides to metals.
- B. Heavy water is used to study reaction mechanism.
- C. Hydrogen is used to make saturated fats from oils
- D. The H-H bond dissociation enthalpy is lowest as compared to a single bond between two atoms of any element.
- E. Hydrogen reduces oxides of metals that are more active than iron

Choose the most appropriate answer from the options given below :

- (1) D, E only
- (2) A, B, C only
- (3) B, C, D, E only
- (4) B, D only

61. Identify the product in the following reaction :



- (1)
- (2)
- (3)
- (4)



62. Some tranquilizers are listed below. Which one from the following belongs to barbiturates?

- (1) Valium
- (2) Veronal
- (3) Chlordiazepoxide
- (4) Meprobamate

63. Given below are two statements :

Statement I : A unit formed by the attachment of a base to 1' position of sugar is known as nucleoside

Statement II : When nucleoside is linked to phosphorous acid at 5'-position of sugar moiety; we get nucleotide.

In the light of the above statements, choose the correct answer from the options given below:

- (1) Statement I is true but Statement II is false.
- (2) Statement I is false but Statement II is true
- (3) Both Statement I and Statement II are true
- (4) Both statement I and Statement II are false.

64. The number of σ bonds, π bonds and lone pair of electrons in pyridine, respectively are:

- (1) 11, 3, 1
- (2) 12, 2, 1
- (3) 11, 2, 0
- (4) 12, 3, 0

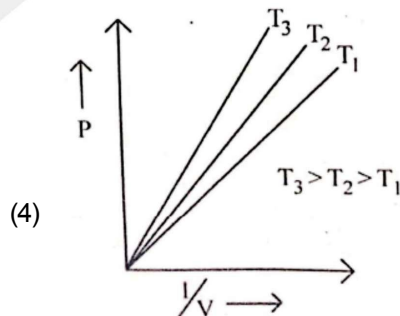
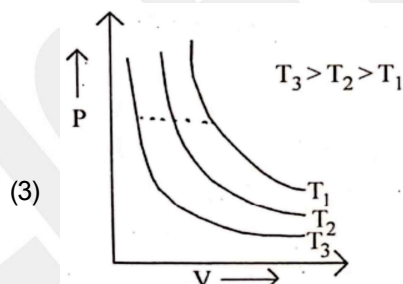
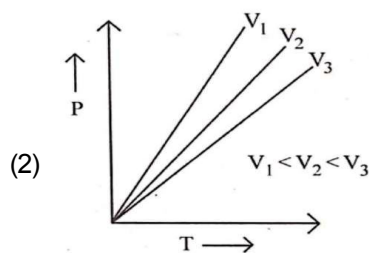
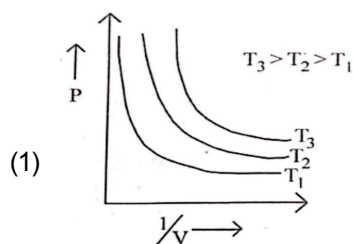
65. Which of the following reactions will NOT give primary amine as the product?

- (1) $\text{CH}_3\text{NC} \xrightarrow[\text{(ii) H}_3\text{O}^{\oplus}]{\text{(i) LiAlH}_4} \text{Product}$
- (2) $\text{CH}_3\text{CONH}_2 \xrightarrow[\text{(ii) H}_3\text{O}^{\oplus}]{\text{(i) LiAlH}_4} \text{Product}$
- (3) $\text{CH}_3\text{CONH}_2 \xrightarrow{\text{Br}_2/\text{KOH}} \text{Product}$
- (4) $\text{CH}_3\text{CN} \xrightarrow[\text{(ii) H}_3\text{O}^{\oplus}]{\text{(i) LiAlH}_4} \text{Product}$

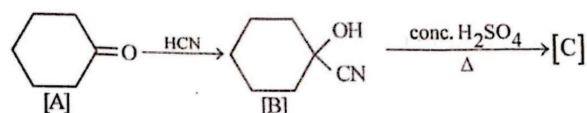
66. The correct order of energies of molecular orbitals of N_2 molecule, is :

- (1) $\sigma 1s < \sigma^* 1s < \sigma 2s < \sigma^* 2s < \sigma^2 p_z < \sigma^* 2p_z < (\pi 2p_x = \pi 2p_y) < (\pi^* 2p_x = \pi^* 2p_y)$
- (2) $\sigma 1s < \sigma^* 1s < \sigma 2s < \sigma^* 2s < (\pi 2p_x = \pi 2p_y) < (\pi^* 2p_x = \pi^* 2p_y) < \sigma 2p_z < \sigma^* 2p_z$
- (3) $\sigma 1s < \sigma^* 1s < \sigma 2s < \sigma^* 2s < (\pi 2p_x = \pi 2p_y) < \sigma 2p_z < (\pi^* 2p_x = \pi^* 2p_y) < \sigma^* 2p_z$
- (4) $\sigma 1s < \sigma^* 1s < \sigma 2s < \sigma^* 2s < \sigma^* 2p_z < (\pi 2p_x = \pi 2p_y) < (\pi^* 2p_x = \pi^* 2p_y) < \sigma^* 2p_z$

67. Which amongst the following options is correct graphical representation of Boyle's Law :



68. Complete the following reaction :



[C] is _____ :

- (1)
- (2)
- (3)
- (4)

69. Homoleptic complex from the following complexes is :
- (1) Pentaamminecarbonatocobalt (III) chloride
 - (2) Triamminetriaquachromium (III) chloride
 - (3) Potassium trioxalatoaluminate (III)
 - (4) Diamminechloridonitrito - N - platinum (II)
70. The given compound is an example of _____ :
- (1) allylic halide
 - (2) vinylic halide
 - (3) benzylic halide
 - (4) aryl halide
71. Which amongst the following molecules on polymerization produces neoprene
- (1) $\text{H}_2\text{C}=\text{CH}-\text{C}\equiv\text{CH}$
 - (2) $\text{H}_2\text{C}=\overset{\text{CH}_3}{\underset{|}{\text{C}}}-\text{CH}=\text{CH}_2$
 - (3) $\text{H}_2\text{C}=\text{CH}-\text{CH}=\text{CH}_2$
 - (4) $\text{H}_2\text{C}=\overset{\text{Cl}}{\underset{|}{\text{C}}}-\text{CH}=\text{CH}_2$
72. Taking stability as the factor, which one of the following represents correct relationship :
- (1) $\text{AlCl} > \text{AlCl}_3$
 - (2) $\text{TlI} > \text{TlI}_3$
 - (3) $\text{TlCl}_3 > \text{TlCl}$
 - (4) $\text{InI}_3 > \text{InI}$
73. Amongst the given options which of the following molecules / ion acts as a Lewis acid?
- (1) BF_3
 - (2) OH^-
 - (3) NH_3
 - (4) H_2O
74. A compound is formed by two elements A and B. The element B forms cubic close packed structure and atoms of A occupy 1/3 of tetrahedral voids. If the formula of the compound is A_xB_y , then the value of $x + y$ is in option :
- (1) 3
 - (2) 2
 - (3) 5
 - (4) 4
75. Intermolecular forces are forces of attraction and repulsion between interacting particles that will include:
- A. dipole - dipole forces.
 - B. dipole - induced dipole forces.
 - C. hydrogen bonding.
 - D. covalent bonding.
 - E. dispersion forces.
- Choose the most appropriate answer from the options given below :
- (1) A, B, C, E are Correct.
 - (2) A, C, D, E are correct.
 - (3) B, C, D, E are correct.
 - (4) A, B, C, D are correct
76. Match List-I with List-II :
- | List-I | List-II |
|--------------|---|
| A. Coke | I. Carbon atoms are sp^3 hybridised. |
| B. Diamond | II. Used as a dry lubricant |
| C. Fullerene | III. Used as a reducing agent |
| D. Graphite | IV. Cage like molecules |
- Choose the correct answer from the options given below :
- (1) A-III, B-I, C-IV, D-II
 - (2) A-III, B-IV, C-I, D-II
 - (3) A-II, B-IV, C-I, D-III
 - (4) A-IV, B-I, C-II, D-III
77. Given below are two statements : one is labelled as Assertion A and the other is labelled as Reason R :
- Assertion A :** Metallic sodium dissolves in liquid ammonia giving a deep blue solution, which is paramagnetic.
- Reasons R :** The deep blue solution is due to the formation of amide.
- In the light of the above statements, choose the correct answer from the options given below:
- (1) A is true but R is false.
 - (2) A is false but R is true.
 - (3) Both A and R are true and R is the correct explanation of A.
 - (4) Both A and R are true but R is NOT the correct explanation of A.

78. Which one is an example of heterogenous catalysis?
- (1) Decomposition of ozone in presence of nitrogen monoxide.
 - (2) Combination between dinitrogen and dihydrogen to form ammonia in the presence of finely divided iron.
 - (3) Oxidation of sulphur dioxide into sulphur trioxide in the presence of oxides of nitrogen.
 - (4) Hydrolysis of sugar catalysed by H^+ ions
79. Amongst the following, the total number of species NOT having eight electrons around central atom in its outer most shell, is :
- $NH_3, AlCl_3, BeCl_2, CCl_4, PCl_5$
- (1) 4
 - (2) 1
 - (3) 3
 - (4) 2
80. The stability of Cu^{2+} is more than Cu^+ salts in aqueous solution due to :
- (1) hydration energy
 - (2) second ionisation enthalpy
 - (3) first ionisation enthalpy
 - (4) enthalpy of atomization
81. The relation between n_m , (n_m = the number of permissible values of magnetic quantum number (m)) for a given value of azimuthal quantum number (l), is :
- (1) $n_m = 2l^2 + 1$
 - (2) $n_m = l + 2$
 - (3) $l = \frac{n_m - 1}{2}$
 - (4) $l = 2n_m + 1$
82. The right option for the mass of CO_2 produced by heating 20 g of 20% pure limestone is (Atomic mass of Ca=40)
- $$[CaCO_3 \xrightarrow{1200K} CaO + CO_2]$$
- (1) 2.64 g
 - (2) 1.32 g
 - (3) 1.12 g
 - (4) 1.76 g
83. Given below are two statements : one is labelled as Assertion A and the other is labelled as Reason R :
- Assertion A :** In equation $\Delta_r G = -nFE_{cell}$ value of $\Delta_r G$ depends on n.
- Reasons R :** Ecell is an intensive property and $\Delta_r G$ is an extensive property.
- In the light of the above statements, choose the correct answer from the options given below :
- (1) A is true but R is false.
 - (2) A is false but R is true.
 - (3) Both A and R are true and R is the correct explanation of A.
 - (4) Both A and R are true and R is NOT the correct explanation of A.
84. For a certain reaction, the rate = $k[A]^2[B]$, when the initial concentration of A is tripled keeping concentration of B constant, the initial rate would:
- (1) increase by a factor of nine
 - (2) increase by a factor of three
 - (3) decrease by a factor of nine
 - (4) increase by a factor of six
85. Weight (g) of two moles of the organic compound, which is obtained by heating sodium ethanoate with sodium hydroxide in presence of calcium oxide is :
- (1) 30
 - (2) 18
 - (3) 16
 - (4) 32
86. Which of the following statements are INCORRECT :
- A. All the transition metals except scandium form MO oxides which are ionic.
 - B. The highest oxidation number corresponding to the group number in transition metal oxides is attained in Sc_2O_3 to Mn_2O_7 .
 - C. Basic character increases from V_2O_3 to V_2O_4 to V_2O_5
 - D. V_2O_4 dissolves in acids to give VO_4^{3-} salts.
 - E. CrO is basic but Cr_2O_3 is amphoteric.
- Choose the correct answer from the option given below:
- (1) C and D only
 - (2) B and C only
 - (3) A and E only
 - (4) B and D only

87. Which amongst the following options is the correct relation between change in enthalpy and change in internal energy?

- (1) $\Delta H - \Delta U = \Delta nRT$
- (2) $\Delta H + \Delta U = \Delta nR$
- (3) $\Delta H = \Delta U - \Delta n_g RT$
- (4) $\Delta H = \Delta U + \Delta n_g RT$

88. What fraction of one edge centred octahedral void lies in one unit cell of fcc?

- (1) 1/4
- (2) 1/12
- (3) 1/2
- (4) 1/3

89. Given below are two statements :

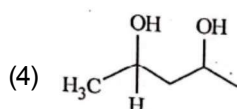
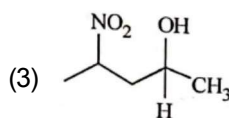
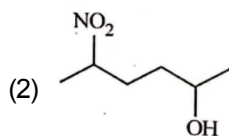
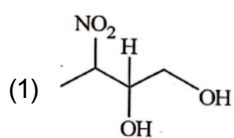
Statement I : The nutrient deficient Water bodies lead to eutrophication.

Statement II : Eutrophication leads to decrease in the level of oxygen in the water bodies.

In the light of the above statements, choose the correct answer from the options given below :

- (1) Statement I is correct but Statement II is false
- (2) Statement I is incorrect but Statement II is true.
- (3) Both Statement I and Statement II are true
- (4) Both Statement I and Statement II are false.

90. Which amongst the following will be most readily dehydrated under acidic conditions :



91. Which complex compound is most stable :

- (1) $[\text{CoCl}_2(\text{En})_2]\text{NO}_3$
- (2) $[\text{Co}(\text{NH}_3)_6]_2(\text{SO}_4)_3$
- (3) $[\text{Co}(\text{NH}_3)_4(\text{H}_2\text{O})\text{Br}](\text{NO}_3)_2$
- (4) $[\text{Co}(\text{NH}_3)_3(\text{NO}_3)_3]$

92. Match List - I with List - II :

List - I (Oxoacids of Sulphur)

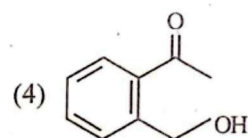
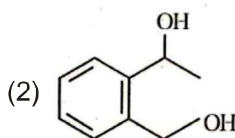
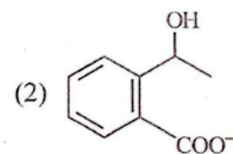
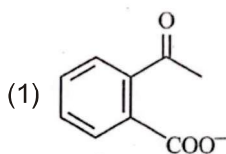
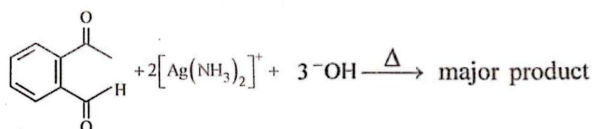
List - II (Bonds)

- | | |
|---------------------------|---|
| A. Peroxodisulphuric acid | I. Two S—OH, Four S=O
One S—O—S |
| B. Sulphuric acid | II. S—OH, One S=O |
| C. Pyrosulphuric acid | III. Two S—OH, Four S=O,
One S—O—O—S |
| D. Sulphurous acid | IV. Two S—OH, Two S=O |

Choose the correct answer from the options given below:

- (1) A-I, B-III, C-IV, D-II
- (2) A-III, B-IV, C-II, D-I
- (3) A-I, B-III, C-II, D-IV
- (4) A-III, B-IV, C-I, D-II

93. Identify the major product obtained in the following reaction :



94. The reaction that does NOT take place in a blast furnace between 900 K to 1500 K temperature range during extraction of iron is :

- (1) $\text{C} + \text{CO}_2 \rightarrow 2\text{CO}$
- (2) $\text{CaO} + \text{SiO}_2 \rightarrow \text{CaSiO}_3$
- (3) $\text{Fe}_2\text{O}_3 + \text{CO} \rightarrow 2\text{FeO} + \text{CO}_2$
- (4) $\text{FeO} + \text{CO} \rightarrow \text{Fe} + \text{CO}_2$

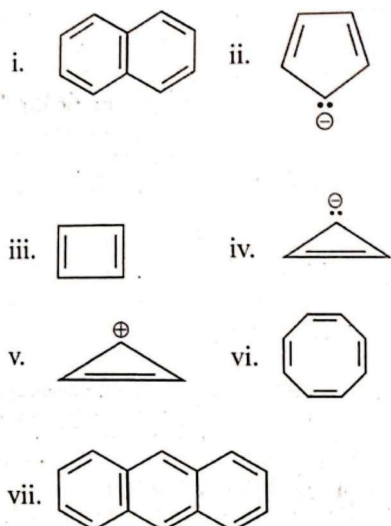
95. The equilibrium concentrations of the species in the reaction $A + B \rightleftharpoons C + D$ are 2, 3, 10 and 6 mol L^{-1} , respectively at 300 K. ΔG° for the reaction is ($R = 2 \text{ cal / mol K}$)

- (1) -1381.80 cal
- (2) -13.73 cal
- (3) 1372.60 cal
- (4) -137.26 cal

96. Pumice stone is an example of :

- (1) solid sol
- (2) foam
- (3) sol
- (4) gel

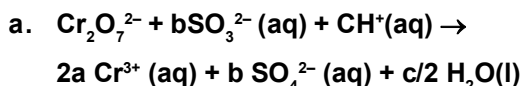
97. Consider the following compounds/species :



The number of compounds/species which obey Huckel's rule is ___

- (1) 2
- (3) 4
- (2) 5
- (4) 6

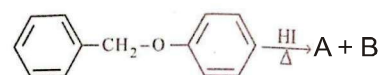
98. On balancing the given redox reaction,




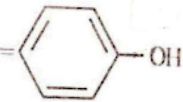
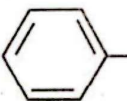
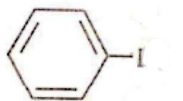

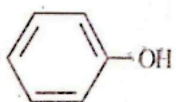
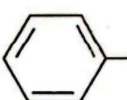

The coefficients a, b and c are found to be, respectively :

- (1) 1, 8, 3
- (2) 8, 1, 3
- (3) 1, 3, 8
- (4) 3, 8, 1

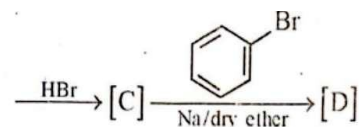
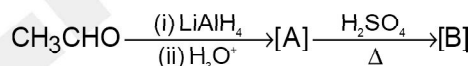
99. Consider the following reaction

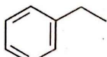
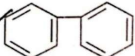


Identify products A and B.

- (1) A =  and B = 
- (2) A =  and B = 
- (3) A =  and B = 
- (4) A =  and B = 

100. Identify the final product [D] obtained in the following sequence of reactions :



- (1) C_4H_{10}
- (2) $\text{HC} \equiv \text{C}^- \text{Na}^+$
- (3) 
- (4) 



BOTANY : SECTION-A- (Q. No. 101 to 135)

101. Given below are two statements : One is labelled as Assertion A and the other is labelled as Reason R :

Assertion A : Late wood has fewer xylary elements with narrow vessels.

Reason R : Cambium is less active in winters.

In the light of the above statements, choose the correct answer from the options given below :

- (1) A is true but R is false
- (2) A is false but R is true
- (3) Both A and R are true and R is the correct explanation of A
- (4) Both A and R are true but R is not the correct explanation of A

102. The phenomenon of pleiotropism refers to

- (1) A single gene affecting multiple phenotypic expression
- (2) More than two genes affecting a single character
- (3) Presence of several alleles of a single gene controlling a single crossover
- (4) Presence of two alleles, each of the two genes controlling a single trait.

103. The thickness of ozone in a column of air in the atmosphere is measured in terms of :

- (1) Decameter
- (2) Kilobase
- (3) Dobson units
- (4) Decibels

104. In angiosperm the haploid diploid and triploid structures of a fertilized embryo sac sequentially are

- (1) Synergids, Zygote and Primary endosperm nucleus
- (2) Synergids, antipodals and polar nuclei
- (3) Synergids, antipodals and polar nuclei and zygote
- (4) Antipodals, synergids and primary endosperm nucleus

105. Given below are two statement :

Statement - I : The forces generated by transpiration can lift a xylem - sized column of water over 130 meters height.

Statement - II : Transpiration cools leaf surfaces sometimes 10 to 15 degrees, by evaporative cooling.

In the light of the above statements choose the most appropriate answer from the options given below :

- (1) Statement I is correct but Statement II is incorrect
- (2) Statement II is incorrect but Statement II is correct
- (3) Both Statement I and Statement II are correct
- (4) Both Statement I and Statement II are incorrect

106. Frequency of recombination between gene pairs on same chromosome as a measure of the distance between genes to map their position on chromosome, was used for the first time by

- (1) Alfred Sturtevant
- (2) Hanking
- (3) Thomas Hunt Morgan
- (4) Sutton and Boveri

107. In the equation

$$GPP - R = NPP$$

GPP is Gross Primary Productivity

NPP is Net Primary Productivity

R here is _____

- (1) Respiratory loss
- (2) Reproductive allocation
- (3) Photosynthetically active radiation
- (4) Respiratory quotient

108. Among 'The Evil Quartet' which one is considered the most important cause driving extinction of species ?
- (1) Alien species invasions
 - (2) Co-extinctions
 - (3) Habitat loss and fragmentation
 - (4) Over exploitation for economic gain
109. How many ATP and NADPH_2 are required for the synthesis of one molecule of Glucose during Calvin cycle ?
- (1) 12 ATP and 16 NADPH_2
 - (2) 18 ATP and 16 NADPH_2
 - (3) 12 ATP and 12 NADPH_2
 - (4) 18 ATP and 12 NADPH_2
110. Given below are two statements :
- Statement - I : Endarch and exarch are the terms often used describing the position of secondary xylem in the plant body.**
- Statement - II : Exarch condition is the most common feature of the root system.**
- In the light of the above statement, choose the correct answer from the options given below**
- (1) Statement I is correct but Statement II is false
 - (2) Statement I is incorrect but Statement II are true
 - (3) Both Statement I and Statement II are true
 - (4) Both Statement I and Statement II are false
111. Family Fabaceae differs from Solanaceae and Liliaceae. With respect to the stamens, pick out the characteristics specific to family Fabaceae but not found in Solanaceae or Liliaceae.
- (1) Monoadelphous and Monotheous anthers
 - (2) Epiphyllous and Ditheous anthers
 - (3) Diadelphous and Ditheous anthers
 - (4) Polyadelphous and epipetalous stamens
112. Identify the pair of heterosporous pteridophytes among the following :
- (1) Psilotum and Salvinia
 - (2) Equisetum and Salvinia
 - (3) Lycopodium and Selaginella
 - (4) Selaginella and Salvinia
113. Among eukaryotes, replication of DNA takes place in
- (1) G_1 phase
 - (2) G_2 phase
 - (3) M phase
 - (4) S phase
114. Which hormone promotes internode/petiole elongation in deep water rice ?
- (1) Ethylene
 - (2) 2, 4-D
 - (3) GA_3
 - (4) Kinetin
115. Large, colourful, fragment flowers with nectar are seen in :
- (1) Bat pollinated plants
 - (2) Wind pollinated plants
 - (3) Insect pollinated plants
 - (4) Bird pollinated plants
- (3) [NC-II-29,30]
116. Which micronutrient is required for splitting of water molecule during photosynthesis ?
- (1) Magnesium
 - (2) Copper
 - (3) Manganese
 - (4) Molybdenum
117. Upon exposure to UV radiation, DNA stained with ethidium bromide will show
- (1) Bright yellow colour
 - (2) Bright orange colour
 - (3) Bright red colour
 - (4) Bright blue colour
118. What is the function of tassels in the corn cob ?
- (1) To disperse pollen grains
 - (2) To protect seeds
 - (3) To attract insects
 - (4) To trap pollen grains

119. During the purification process for recombinant DNA technology, addition of chilled ethanol precipitates out
- (1) Histones (2) Polysaccharides
(3) RNA (4) DNA
120. Given below are two statements : One is labelled as Assertion A and the other is labelled as Reason R :
- Assertion A :** ATP is used at two steps in glycolysis
Reason : First ATP is used in converting glucose into glucose -6-phosphate and second ATP is used in conversion of fructose -6-phosphate into fructose-1-6-diphosphate.
- In the light of the above statements, choose the correct answer from the options given below
- (1) A is true but R is false
(2) A is false but R is true
(3) Both A and R are true and R is the correct explanation of A
(4) Both A and R are true but R is not the correct explanation of A
121. **Expressed Sequence Tags (ESTs)** refers to
- (1) All genes whether expressed or unexpressed
(2) Certain important expressed genes
(3) All genes that are expressed as RNA
(4) All genes that are expressed as proteins
122. **Movement and accumulation of ions across a membrane against their concentration gradient can be explained by**
- (1) Passive Transport
(2) Active Transport
(3) Osmosis
(4) Facilitated Diffusion
123. Given below are two statements : One is labelled as Assertion A and the other is labelled as Reason R :
- Assertion A :** The first stage of gametophyte in the life cycle of moss is protonema stage.
Reason R : Protonema develops directly from spores produced in capsule.
- In the light of the above statements, choose the most appropriate answer from the options given below :
- (1) A is correct but R is not correct
(2) A is not correct but R is correct
(3) Both A and R are correct and R is the correct explanation of A
(4) Both A and R are correct but R is not the correct explanation of A
124. Identify the correct statement :
- A. Detritivores perform fragmentation.
B. The humus is further degraded by some microbes during mineralization
C. Water soluble inorganic nutrients go down into the soil and get precipitated by a process called leaching
D. The detritus food chain begins with living organisms.
E. Earthworms break down detritus into smaller particles by a process called catabolism
- Choose the correct answer from the options given below :
- (1) C, D, E only (2) D, E, A only
(3) A, B, C only (4) B, C, D only
125. **The reaction centre in PS II has an absorption maxima at**
- (1) 660 nm
(2) 780 nm
(3) 680 nm
(4) 700 nm
126. **What is the role of RNA polymerase III in the process of transcription in Eukaryotes ?**
- (1) Transcription of precursor of mRNA
(2) Transcription of only snRNAs
(3) Transcription of rRNAs (28S, 18S and 5.8S)
(4) Transcription of tRNA, 5srRNA and snRNA
127. **Which of the following stages of meiosis involves division of centromere ?**
- (1) Anaphase II
(2) Telophase
(3) Metaphase I
(4) Metaphase II
128. **Spraying of which of the following phytohormone on juvenile conifers helps in hastening the maturity period, that leads to early seed production ?**
- (1) Zeatin
(2) Abscisic Acid
(3) Indole - 3- butyric acid
(4) Gibberellic acid

- 129. Cellulose does not form blue colour with Iodine because**
- (1) It does not contain complex helices and hence cannot hold iodine molecules
 - (2) It breaks down when iodine reacts with it
 - (3) It is a disaccharide
 - (4) It is a helical molecule
- 130. In tissue culture experiments, leaf mesophyll cells are put in a culture medium to form callus. This phenomenon may be called as :**
- (1) Development
 - (2) Senescence
 - (3) Differentiation
 - (4) Dedifferentiation
- 131. Axile placentation is observed in**
- (1) Tomato, Dianthus and Pea
 - (2) China rose, Petunia and Lemon
 - (3) Mustard, Cucumber and Primrose
 - (4) China rose, Beans and Lupin
- 132. Unequivocal proof that DNA is the genetic material was first proposed by**
- (1) Avery, Macleoida nd McCarthy
 - (2) Wilkins and Franklin
 - (3) Frederick Griffith
 - (4) Alfred Hershey and Martha Chase
- 133. In gene gun method used to introduce alien DNA into host cells, microparticles of _____metal are used**
- (1) Tungsten or gold
 - (2) Silver
 - (3) Copper
 - (4) Zinc
- 134. The historic Convention on Biological Diversity, 'The Earth Summit' was held in Rio de Janeiro in the year**
- (1) 1986
 - (2) 2002
 - (3) 1985
 - (4) 1992
- 135. The process of appearance of recombination nodules occurs at which sub stage of prophase I in meiosis ?**
- (1) Diplotene
 - (2) Diakinesis
 - (3) Zygotene
 - (4) Pachytene
-
- BOTANY : SECTION-B- (Q. No. 136 to 150)**
-
- 136. Match List I with List II :**
- | List - I | List - II |
|---------------|---|
| A. Iron | I. Synthesis of auxin |
| B. Zinc | II. Component of nitrate reductase |
| C. Boron | III. Activator of catalase |
| D. Molybdenum | IV. Cell elongation and differentiation |
- Choose the correct answer from the option given below :**
- (1) A-III, B-I, C-IV, D-II
 - (2) A-II, B-IV, C-I, D-III
 - (3) A-III, B-II, C-I, D-IV
 - (4) A-II, B-III, C-IV, D-I
- 137. Main steps in the formation of Recombinant DNA are given below. Arrange these steps in a correct sequence.**
- A. Insertion of recombinant DNA into the host cell
 - B. Cutting of DNA at specific location by restriction enzyme
 - C. Isolation of desired DNA fragment.
 - D. Amplification of gene of interest using PCR
- Choose the correct answer from the options given below**
- (1) C, B, D, A
 - (2) B, D, A, C
 - (3) B, C, D, A
 - (4) C, A, B, D

138. Which one of the following statements is not correct ?

- (1) Water hyacinth grows abundantly in eutrophic water bodies and leads to an imbalance in the ecosystem dynamics of the water body
- (2) The amount of some toxic substances of industrial waste water increases in the organisms at successive trophic levels
- (3) The micro-organisms involved in biodegradation of organic matter in a sewage polluted water body consume a lot of oxygen causing the death of aquatic organisms
- (4) Algal blooms caused by excess of organic matter in water improve water quality and promote fisheries

139. How many different proteins does not ribosome consist of :

- (1) 40
- (2) 20
- (3) 80
- (4) 60

140. Match List I with List II

List - I	List - II
A. Cohesion	I. More attraction in liquid phase
B. Adhesion	II. Mutual attraction among water molecules
C. Surface tension	III. Water loss in liquid phase
D. Guttation	IV. Attraction towards polar surfaces

Choose the correct answer from the options given below

- (1) A-III, B-I, C-IV, D-II
- (2) A-II, B-I, C-IV, D-III
- (3) A-II, B-IV, C-I, D-III
- (4) A-IV, B-III, C-II, D-I

141. Which of the following combination is required for chemiosmosis?

- (1) Proton pump, electron gradient, ATP synthase
- (2) Proton pump, electron gradient, NADP synthase
- (3) Membrane, proton pump, proton gradient, ATP synthase
- (4) Membrane, proton pump, proton gradient, NADP synthase

142. Match List I with List II

List - I (Interaction)	List - II (Species A and B)
A. Mutualism	I. +(A), O(B)
B. Commensalism	II. -(A), O(B)
C. Amensalism	III. +(A), -(B)
D. Parasitism	IV. +(A), +(B)

Choose the correct answer from the options given below

- (1) A-IV, B-III, C-I, D-II
- (2) A-III, B-I, C-IV, D-II
- (3) A-IV, B-II, C-I, D-III
- (4) A-IV, B-I, C-II, D-III

143. Melonate inhibits the growth of pathogenic bacteria by inhibiting the activity of

- (1) Lipase
- (2) Dinitrogenase
- (3) Succinic dehydrogenase
- (4) Amylase

144. Which of the following statements are correct about Klinefelter's Syndrome ?

- A. This disorder was first described by Langdon Down (1866)
- B. Such an individual has overall masculine development. However, the feminine development is also expressed
- C. The affected individual is short expressed
- D. Physical, psychomotor and mental development is retarded
- E. Such individuals are sterile

Choose the correct answer from the options given below

- (1) B and E only
- (2) A and E only
- (3) A and B only
- (4) C and D only

145. Match List-I with List - II

List - I	List - II
A. M phase	I. Proteins are synthesized
B. G ₂ phase	II. Inactive phase
C. Quiescent	III. Interval between mitosis and initiation of DNA replication
D. G ₁ Phase	IV. Equational division

Choose the correct answer from the options given below

- (1) A-IV, B-I, C-II, D-III
- (2) A-II, B-IV, C-I, D-III
- (3) A-III, B-II, C-IV, D-I
- (4) A-IV, B-II, C-I, D-III

146. Match List - I with List -II

- | | |
|------------------------------|--------------------------------|
| A. Oxidative decarboxylation | I. Citrate synthase |
| B. Glycolysis | II. Pyruvate dehydrogenase |
| C. Oxidative phosphorylation | III. Electron transport system |
| D. Tricarboxylic acid cycle | IV. EMP pathway |

Choose the correct answer from the options given below

- (1) A-III, B-I, C-II, D-IV
- (2) A-II, B-IV, C-III, D-I
- (3) A-III, B-IV, C-II, D-I
- (4) A-II, B-IV, C-I, D-III

147. Given below are two statements : One is labelled as Assertion A and the other is labelled as Reason R :

Assertion A : In gymnosperms the pollen grains are released from the microsporangium and carried by air currents

Reason R : Air currents carry the pollen grains to the mouth of the archegonia where the male gametes are discharged and pollen tube is not formed

In the light of the above statements, choose the correct answer from the options given below

- (1) A is true but R is false
- (2) A is false but R is true
- (3) Both A and R are true and R is the correct explanation of A
- (4) Both A and R are true but R is not the correct explanation of A

148. Given below are two statements :

Statement-I : Gause's 'Competitive Exclusion Principle' states that two closely related species competing for the same resources cannot co-exist indefinitely and competitively inferior one will be eliminated eventually.

Statement -II : In general, carnivores are more adversely affected by competition than herbivores

In the light of the above statements, choose the correct answer from the options given below

- (1) Statement I is correct but Statement II is false
- (2) Statement I is incorrect but Statement II is true
- (3) Both Statement I and Statement II are true
- (4) Both Statement I and Statement II are false

149. Given below are two statements : One is labelled as Assertion A and the other is labelled as Reason R :

Assertion A : A flower is defined as modified shoot wherein the shoot apical meristem changes to floral meristem.

Reason R : Internode of the shoot gets condensed to produce difference floral appendages laterally at successive nodes instead of leaves

In the light of the above statements, choose the correct answer from the options given below :

- (1) A is true but R is false
- (2) A is false but R is true
- (3) Both A and R are true and R is the correct explanation of A
- (4) Both A and R are true but R is not the correct explanation of A

150. Identify the correct statements :

- A. Lenticels are the lens - shaped openings permitting the exchange of gases
- B. Bark formed early in the season is called hard bark
- C. Bark is a technical term that refers to all tissues exterior to vascular cambium
- D. Bark refers to periderm and secondary phloem
- E. Phellogen is single - layered in thickness

Choose the correct answer from the options given below :

- (1) A, B and D only
- (2) B and C only
- (3) B, C and E only
- (4) A and D only

ZOOLOGY – SECTION-A (Q. NO. 151 to 185)

151. In which blood corpuscles, the HIV undergoes replication and produces progeny viruses?

- (1) Basophils
- (2) Eosinophils
- (3) T_H cells
- (4) B-lymphocytes

152. Match List I with List II.

List I	List II
A. Gene 'a'	I. β -galactosidase
B. Gene 'y'	II. Transacetylase
C. Gene 'i'	III. Permease
D. Gene 'z'	IV. Repressor protein

Choose the correct answer from the options given below:

- (1) A-III, B-IV, C-I, D-II
- (2) A-III, B-I, C-IV, D-II
- (3) A-II, B-I, C-IV, D-III
- (4) A-II, B-III, C-IV, D-I

153. Match List I with List II.

List I	List II
A. Ringworm.	I. Haemophilus influenzae
B. Filariasis	II. Trichophyton
C. Malaria III.	III. Wuchereria bancrofti
D. Pneumonia	IV. Plasmodium vivax

Choose the correct answer from the options given below:

- (1) A-III, B-II, C-I, D-IV
- (2) A-III, B-II, C-IV, D-I
- (3) A-II, B-III, C-IV, D-I
- (4) A-II, B-III, C-I, D-IV

154. Select the correct group/set of Australian Marsupials exhibiting adaptive radiation.

- (1) Mole, Flying squirrel, Tasmanian tiger cat
- (2) Lemur, Anteater, Wolf
- (3) Tasmanian wolf, Bobat, Marsupial mole
- (4) Numbat, Spotted cuscus, Flying phalanger

155. Given below are statements: One is labelled as Assertion A and the other is labelled as Reason R.

Assertion A:

Nephrons are of two types: Cortical & Juxta medullary, based on their relative position in cortex and medulla.

Reason R:

Juxta medullary nephrons have short loop of Henle whereas, cortical nephrons have longer loop of Henle.

In the light of the above statements, choose the **correct** answer from the options given below:

- (1) A is true but R is false
- (2) A is false but R is true
- (3) Both A and R are true and R is the correct explanation of A.
- (4) Both A and R are true but R is NOT the correct explanation of A.

156. Given below are two statements:

Statement I:

In prokaryotes, the positively charged DNA is held with some negatively charged proteins in a region called nucleoid.

Statement II:

In eukaryotes, the negatively charged DNA is wrapped around the positively charged histone octamer to form nucleosome.

In the list of the above statements, choose the **correct** answer from the options given below:

- (1) **Statement I** is correct but **Statement II** is false
- (2) **Statement I** incorrect but **Statement II** is true
- (3) Both **Statement I** and **Statement II** are true.
- (4) Both **Statement I** and **Statement II** are false.

157. Which of the following statements are correct regarding female reproductive cycle?

- (A) In non-primate mammals cyclical changes during reproduction are called oestrus cycle.
- (B) First menstrual cycle begins at puberty and is called menopause.
- (C) Lack of menstruation may be indicative of pregnancy.
- (D) Cyclic menstruation extends between menarche and menopause.

Choose the **most appropriate** answer from the options given below:

- (1) A, B and C only
- (2) A, C and D only
- (3) A and D only
- (4) A and B only

158. Given below are two statements:

Statement I:

Vas deferens receives a duct from seminal vesicle and opens into urethra as the ejaculatory duct.

Statement II:

The cavity of the cervix is called cervical canal which along with vagina forms birth canal.

In the light of the above statements, choose the **correct** answer from the options given below:

- (1) **Statement I** is correct but **Statement II** is false
- (2) **Statement I** incorrect but **Statement II** are true
- (3) Both **Statement I** and **Statement II** are true.
- (4) Both **Statement I** and **Statement II** are false

159. Given below are two statements:

Statement I:

Low temperature preserves the enzyme in a temporarily inactive state whereas high temperature destroys enzymatic activity because proteins are denatured by heat.

Statement II:

When the inhibitor closely resembles the substrate in its molecular structure and inhibits the activity of the enzyme, it is known as competitive inhibitor.

In the light of the above statements, choose the **correct** answer from the options given below:

- (1) **Statement I** is true but **Statement II** is false
- (2) **Statement I** is false but **Statement II** is true
- (3) Both **Statement I** and **Statement II** are true.
- (4) Both **Statement I** and **Statement II** are false

160. Match List I with List II.

List I	List II
A. Heroin	I. Effect on cardiovascular system
B. Marijuana	II. Slow down body function
C. Cocaine	III. Painkiller
D. Morphine	IV. Interfere with transport of dopamine

Choose the correct answer from the options given below:

- (1) A-IV, B-III, C-II, D-I
- (2) A-III, B-IV, C-I, D-II
- (3) A-II, B-I, C-IV, D-III
- (4) A-I, B-II, C-III, D-IV

161. Match List I with List II.

List I (Cells)	List II (Secretion)
A. Peptic cells	I. Mucus
B. Goblet cells	II. Bile juice
C. Oxyntic cells	III. Proenzyme pepsinogen
D. Hepatic cells	IV. HCL and intrinsic factor for absorption of vitamin B ₁₂

Choose the correct answer from the options given below:

- (1) A-III, B-I, C-IV, D-II
- (2) A-II, B-IV, C-I, D-III
- (3) A-IV, B-III, C-II, D-I
- (4) A-II, B-I, C-III, D-IV

162. Which one of the following techniques does not serve the purpose of early diagnosis of a disease for its early treatment?

- (1) Polymerase Chain Reaction (PCR) technique
- (2) Enzyme Linked Immuno-Sorbent Assay (ELISA) technique
- (3) Recombinant DNA Technology
- (4) Serum and Urine analysis

163. Given below are two statements:

Statement I:

RNA mutates at a faster rate.

Statement II:

Viruses having RNA genome and shorter life span mutate and evolve faster

In the light of the above statements, choose the **correct** answer from the options given below:

- (1) **Statement I** is true but **Statement II** is false
- (2) **Statement I** false but **Statement II** is true
- (3) Both **Statement I** and **Statement II** are true.
- (4) Both **Statement I** and **Statement II** are false

164. Radial symmetry is NOT found in adults of phylum _____.

- (1) Coelenterata
- (2) Echinodermata
- (3) Ctenophora
- (4) Hemichordata



165. Broad palm with single palm crease is visible in a person suffering from:

- (1) Klinefelter's syndrome
- (2) Thalassemia
- (3) Down's syndrome
- (4) Turner's syndrome

166. Match List I with List II.

List I (Type of joint)	List II (Found between)
A. Cartilaginous Joint	I. Between flat skull bones
B. Ball and Socket Joint	II. Between adjacent vertebrae in vertebral column
C. Fibrous Joint	III. Between carpal and metacarpal of thumb
D. Saddle Joint	IV. Between Humerus and Pectoral girdle

Choose the correct answer from the options given below:

- (1) A-I, B-IV, C-III, D-II
- (2) A-II, B-IV, C-III, D-I
- (3) A-III, B-I, C-II, D-IV
- (4) A-II, B-IV, C-I, D-III

167. Match List I with List II.

List I	List II
A. CCK	I. Kidney
B. GIP	II. Heart
C. ANF	III. Gastric gland
D. ADH	IV. Pancreas

Choose the correct answer from the options given below:

- (1) A-II, B-IV, C-I, D-III
- (2) A-IV, B-II, C-III, D-I
- (3) A-IV, B-III, C-II, D-I
- (4) A-III, B-II, C-IV, D-I

168. Given below are two statements:

Statement I:

Electrostatic precipitator is most widely used in thermal power plant.

Statement II:

Electrostatic precipitator in thermal power plant removes ionising radiations.

In the light of the above statements, choose the **most appropriate** answer from the options given below:

- (1) **Statement I** is correct but **Statement II** is incorrect
- (2) **Statement I** incorrect but **Statement II** is correct
- (3) Both **Statement I** and **Statement II** are correct.
- (4) Both **Statement I** and **Statement II** are incorrect.

169. Match List I with List II.

List I (Interacting species)	List II (Name of Interaction)
A. A Leopard and a Lion in a forest/ grassland	I. Competition
B. A Cuckoo laying egg in a Crow's nest	II. Brood parasitism
C. Fungi and root of a higher plant in Mycorrhizae	III. Mutualism
D. A cattle egret and a Cattle in a field	IV. Commensalism

Choose the correct answer from the options given below:

- (1) A-III, B-IV, C-I, D-II
- (2) A-II, B-III, C-I, D-IV
- (3) A-I, B-II, C-III, D-IV
- (4) A-I, B-II, C-IV, D-III

170. Given below are two statements:

Statement I:

Ligaments are dense irregular tissue.

Statement II:

Cartilage is dense regular tissue

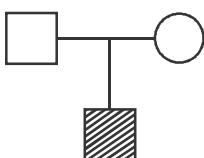



In the light of the above statements, choose the **correct** answer from the options given below:

- (1) **Statement I** is true but **Statement II** is false
- (2) **Statement I** is false but **Statement II** is true
- (3) Both **Statement I** and **Statement II** are true
- (4) Both **Statement I** and **Statement II** are false.

171. Which of the following statements is correct?

- (1) Presence of large amount of nutrients in water restricts 'Algal Bloom'
- (2) Algal Bloom decreases fish mortality
- (3) Eutrophication refers to increase in domestic sewage and waste water in lakes
- (4) Biomagnification refers to increase in concentration of the toxicant at successive trophic levels.

172. Which one of the following symbols represents mating between relatives in human pedigree analysis?

- (1) 
- (2) 
- (3) 
- (4) 

173. Which of the following is not a cloning vector?

- (1) pBR322
- (2) Probe
- (3) BAC
- (4) YAC

174. Given below are two statements:

Statement I:

A protein is imagined as a line, the left end represented by first amino acid (C-terminal) and the right end represented by last amino acid (N-terminal)

Statement II:

Adult human haemoglobin, consists of 4 subunits (two subunits of α type and two subunit of β type)

In the light of the above statements, choose the **correct** answer from the options given below:

- (1) **Statement I** is true but **Statement II** is false
- (2) **Statement I** is false but **Statement II** is true
- (3) Both **Statement I** and **Statement II** are true
- (4) Both **Statement I** and **Statement II** are false.

175. Which of the following functions is carried out by cytoskeleton in a cell?

- (1) Motility
- (2) Transportation
- (3) Nuclear division
- (4) Protein synthesis

176. Given below are statements: One is labelled as Assertion A and the other is labelled as Reason R.

Assertion A:

Endometrium is necessary for implantation of blastocyst.

Reason R:

In the absence of fertilization, the corpus luteum degenerates that causes disintegration of endometrium.

In the light of the above statements, choose the **correct** answer from the options given below:

- (1) A is true but R is false
- (2) A is false but R is true
- (3) Both A and R are true and R is the correct explanation of A.
- (4) Both A and R are true but R is NOT the correct explanation of A

177. Match List I with List II.

List I	List II
A. Taenia	I. Nephridia
B. Paramoecium	II. Contractile vacuole
C. Periplaneta	III. Flame cells
D. Pheretima	IV. Urecose gland

Choose the correct answer from the options given below:

- (1) A-III, B-II, C-IV, D-I
- (2) A-II, B-I, C-IV, D-III
- (3) A-I, B-II, C-III, D-IV
- (4) A-I, B-II, C-IV, D-III

178. Which of the following are NOT considered as the part of endomembrane system?

- | | |
|------------------|---------------------------|
| (A) Mitochondria | (B) Endoplasmic Reticulum |
| (C) Chloroplasts | (D) Golgi complex |
| (E) Peroxisomes | |

Choose the **most appropriate** answer from the options given below:

- (1) A and D only
- (2) A, D and E only
- (3) B and D only
- (4) A, C and E only



179. Match List I with List II.

List I	List II
A. Vasectomy	I. Oral method
B. Coitus interruptus	II. Barrier method
C. Cervical caps	III. Surgical method
D. Saheli	IV. Natural method

Choose the correct answer from the options given below:

- (1) A-II, B-III, C-I, D-IV
- (2) A-IV, B-II, C-I, D-III
- (3) A-III, B-I, C-IV, D-II
- (4) A-III, B-IV, C-II, D-I

180. Once the undigested and unabsorbed substances enter the caecum, their backflow is prevented by:

- (1) Gastro - oesophageal sphincter
- (2) Pyloric sphincter
- (3) Sphincter of Oddi
- (4) Ileo - caecal valve

181. Which one of the following common sexually transmitted diseases is completely curable when detected early and treated properly.

- | | |
|--------------------|-------------------|
| (1) Hepatitis-B | (2) HIV Infection |
| (3) Genital herpes | (4) Gonorrhoea |

182. Vital capacity of lung is _____

- (1) IRV + ERV + TV – RV
- (2) IRV + ERV + TV
- (3) IRV + ERV
- (4) IRV + ERV + TV + RV

183. Match List I with List II with respect to human eye.

List I	List II
A. Fovea	I. Visible coloured portion of eye that regulates diameter of pupil.
B. Iris	II. External layer of eye formed of dense connective tissue.
C. Blind spot	III. Point of greatest visual acuity or resolution
D. Sclera	IV. Point where optic nerve leaves the eyeball and photoreceptor cells are absent.

Choose the correct answer from the options given below:

- | | |
|----------------------------|----------------------------|
| (1) A-I, B-IV, C-III, D-II | (2) A-II, B-I, C-III, D-IV |
| (3) A-III, B-I, C-IV, D-II | (4) A-IV, B-III, C-II, D-I |

184. Match List I with List II

List I	List II
A. P - wave	I. Beginning of systole
B. Q - wave	II. Repolarisation of ventricles
C. QRS complex	III. Depolarisation of atria
D. T - wave	IV. Depolarisation of ventricles

Choose the correct answer from the options given below:

- (1) A-II, B-IV, C-I, D-III
- (2) A-I, B-II, C-III, D-IV
- (3) A-III, B-I, C-IV, D-II
- (4) A-IV, B-III, C-II, D-I

185. Given below are statements: One is labelled as Assertion A and the other is labelled as Reason R.

Assertion A:

Amniocentesis for sex determination is one of the strategies of Reproductive and Child Health Care Programme.

Reason R:

Ban on amniocentesis checks increasing menace of female foeticide.

In the light of the above statements, choose the correct answer from the options given below:

- (1) A is true but R is false
- (2) A is false but R is true
- (3) Both A and R are true and R is the correct explanation of A.
- (4) Both A and R are true but R is NOT the correct explanation of A

ZOOLOGY – SECTION-A (Q. NO. 186 to 200)

186. Which of the following statements are correct regarding skeletal muscle?

- A. Muscle bundles are held together by collagenous connective tissue layer called fascicle.
- B. Sarcoplasmic reticulum of muscle fibre is a store house of calcium ions.
- C. Striated appearance of skeletal muscle fibre is due to distribution pattern of actin and myosin proteins.
- D. M line is considered as functional unit of contraction called sarcomere.

- (1) A, C and D only (2) C and D only
(3) A, B and C only (4) B and C only

187. Which of the following are NOT under the control of thyroid hormone?

- A. Maintenance of water and electrolyte balance.
- B. Regulation of basal metabolic rate
- C. Normal rhythm of sleep-wake cycle
- D. Support the process of R.B.Cs formation

Choose the **correct** answer from the options given below:

- (1) C and D only (2) D and E only
(3) A and D only (4) B and C only

188. Which one of the following is the sequence on corresponding coding strand, if the sequence on mRNA formed is as follows

5' AUCGAUCGAUCGAUCG
AUCG AUCG 3'?

- (1) 5'ATCGATCGATCGATCG
ATCGATCG 3'
- (2) 3'ATCGATCGATCGATCG
ATCGATCG 5'
- (3) 5' UAGCUAGCUAGCUAGCUA
GCUAGC UAGC 3'
- (4) 3' UAGCUAGCUAGCUAGCUA
GCUAGCUAGC 5'

189. Select the correct statements with reference to chordates.

- A. Presence of a mid-dorsal, solid and double nerve cord.
- B. Presence of closed circulatory system.
- C. Presence of paired pharyngeal gill slits
- D. Presence of dorsal heart
- E. Triploblastic pseudocoelomate animals

Choose the correct answer from the options given below:

- (1) B, D and E only (2) C, D and E only
(3) A, C and D only (4) B and C only

190. The parts of human brain that help in regulation of sexual behaviour, expression of excitement, pleasure, rage, fear etc. are:

- (1) Brain stem & epithalamus
- (2) Corpus callosum and thalamus
- (3) Limbic system & hypothalamus
- (4) Corpora quadrigemina & hippocampus

191. Which of the following is characteristic feature of cockroach regarding sexual dimorphism?

- (1) Presence of sclerites
- (2) Presence of anal cerci
- (3) Dark brown body colour and anal cerci
- (4) Presence of anal style

192. Given below are two statements:

Statement I:

During G_0 phase of cell cycle, the cell is metabolically inactive.

Statement II:

The centrosome undergoes duplication during S phase of interphase. In the light of the above statements, choose the **most appropriate** answer from the options given below:

In the light of the above statements, choose the **correct** answer from the options given below:

- (1) **Statement I** is correct but **Statement II** is incorrect
- (2) **Statement I** is incorrect but **Statement II** is correct
- (3) Both **Statement I** and **Statement II** are correct
- (4) Both **Statement I** and **Statement II** are incorrect

193. In cockroach, excretion is brought about by:

- A. Phallic gland
- B. Urecose gland
- C. Nephrocytes
- D. Fat body
- E. Collateral glands

Choose the correct answer from the options given

below:

- (1) B, C and D only
- (2) B and Donly
- (3) A and E only
- (4) A, B and E only

194. The unique mammalian characteristics are:

- (1) hairs, pinna and indirect development
- (2) Pinna, monocondylic skull and mammary glands.
- (3) hairs, tympanic membrane and mammary glands
- (4) hairs, pinna and mammary glands.

195. Which of the following statements are correct?

- A. Basophils are most abundant cells of the total WBCs
- B. Basophils secrete histamine, serotonin and heparin
- C. Basophils are involved in inflammatory response
- D. Basophils have kidney shaped nucleus
- E. Basophils are agranulocytes

Choose the correct answer from the options given below:

- (1) B and C only
- (2) A and B only
- (3) D and E only
- (4) C and E only

196. Which of the following statements are correct?

- A. An excessive loss of body fluid from the body switches off osmoreceptors
- B. ADH facilitates water reabsorption to prevent diuresis.
- C. ANF causes vasodilation
- D. ADH causes increase in blood pressure
- E. ADH is responsible for decrease in GFR.

Choose the correct answer from the options given

below:

- (1) A, B and E only
- (2) C, D and E only
- (3) A and B only
- (4) B, C and D only

197. Select the correct statements:

- A. Tetrad formation is seen during Leptotene
- B. During Anaphase, the centromeres split and chromatids separate.
- C. Terminalization takes place during pachytene.
- D. Nucleolus, Golgi complex and ER are reformed during Telophase.
- E. Crossing over takes place between sister chromatids of homologous chromosome.

Choose the correct answer from the options given

below:

- (1) A, E and E only
- (2) B and E only
- (3) A and C only
- (4) B and D only

198. Match List I with List II

- | List I | List II |
|--------------------------|---|
| A. Logistic growth | I. Unlimited resource availability condition |
| B. Exponential growth | II. Limited resource availability condition |
| C. Expanding age pyramid | III. The percent individuals of pre-reproductive age is largest followed by reproductive and post reproductive age groups |
| D. Stable age pyramid | IV. The percent individuals of pre-reproductives and reproductive age group are same |

Choose the correct answer from the options given below:

- (1) A-II, B-IV, C-I, D-III
- (2) A-II, B-IV, C-III, D-I
- (3) A-II, B-I, C-III, D-IV
- (4) A-II, B-III, C-I, D-IV

199. Which one of the following NOT advantage of inbreeding?

- (1) Elimination of less desirable genes and accumulation of superior genes takes place due to it.
- (2) It decreases the productivity of inbred population, after continuous inbreeding
- (3) It decreases homozygosity
- (4) It exposes harmful recessive genes that are eliminated by selection.

200. Match List I with List II

List I	List II
A. Mast cells	I. Ciliated epithelium
B. Inner surface of bronchiole	II. Areolar
C. Blood	III. Cuboidal epithelium
D. Tubular parts of nephron	IV. specialised tissue

Choose the correct answer from the options given below:

- (1) A-II, B-I, C-IV, D-III
- (2) A-III, B-IV, C-II, D-I
- (3) A-I, B-II, C-IV, D-III
- (4) A-II, B-III, C-I, D-IV

