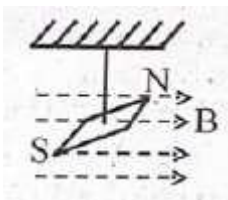
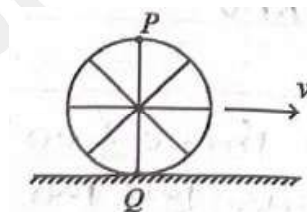




1. In an ideal transformer, the turns ratio is $\frac{N_p}{N_s} = \frac{1}{2}$. The ratio $V_s : V_p$ is equal to (the symbols carry their usual meaning):
- (1) 2 : 1
(2) 1 : 1
(3) 1 : 4
(4) 1 : 2
2. A tightly wound 100 turns coil of radius 10 cm carries a current of 7 A. The magnitude of the magnetic field at the centre of the coil is: (Take permeability of free space as $4\pi \times 10^{-7}$ Slunits)
- (1) 4.4 T
(2) 4.4 mT
(3) 44 T
(4) 44 mT
3. In a uniform magnetic field of 0.049 T, a magnetic needle performs 20 complete oscillations in 5 seconds as shown. The moment of inertia of the needle is 9.8×10^{-6} kg m². If the magnitude of magnetic moment of the needle is $x \times 10^{-5}$ Am², then the value of 'x' is:



4. A thin flat circular disc of radius 4.5 cm is placed gently over the surface of water. If surface tension of water is 0.07 Nm^{-1} , then the excess force required to take it away from the surface is:
- (1) 198 N
(2) 1.98 mN
(3) 99 N
(4) 19.8 mN
5. A wheel of a bullock cart is rolling on a level road as shown in the figure below. If its linear speed is v in the direction shown, which one of the following options is correct (P and Q are any highest and lowest points on the wheel, respectively)?



- (1) Point P moves faster than point Q.
(2) Both the points P and Q move with equal speed
(3) Point P has zero speed
(4) Point P moves slower than point Q.
6. If $x = 5 \sin\left(\pi t + \frac{\pi}{3}\right)$ m represents the motion of a particle executing simple harmonic motion, the amplitude and time period of motion, respectively, are:
- (1) 5 m, 2 s
(2) 5 cm, 1 s
(3) 5 m, 1 s
(4) 5 cm, 2s

7. A bob is whirled in a horizontal plane by means of a string with an initial speed of ω rpm. the tension in the string is T. If speed becomes 2ω while keeping the same radius, the tension in the string becomes:

- (1) $4T$
- (2) $\frac{T}{4}$
- (3) $\sqrt{2}T$
- (4) T

8. A wire of length 'l' and resistance 100Ω is divided into 10 equal parts the first 5 parts are connected in series while the next 5 parts are connected in parallel. The two combinations are again connected in series. The resistance of this final combination is:

- (1) 52Ω
- (2) 55Ω
- (3) 60Ω
- (4) 26Ω

9. A logic circuit provides the output Y as per the following truth table:

A	B	Y
0	0	1
0	1	0
1	0	1
1	1	0

The expression for the output Y is:

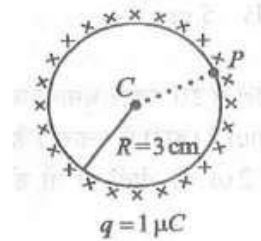
- (1) $A\bar{B} + \bar{A}$
- (2) \bar{B}
- (3) B
- (4) $AB + \bar{A}$

10. The quantities which have the same dimensions as those of solid angle are:

- (1) stress and angle
- (2) strain and arc
- (3) angular speed and stress
- (4) Strain and angle

11. A thin spherical shell is charged by same source. The potential difference between the two points C and P (in V) shown in the figure is:

(Take $\frac{1}{4\pi\epsilon_0} = 9 \times 10^9$ SI units)



- (1) 1×10^5
- (2) 0.5×10^5
- (3) zero
- (4) 3×10^5

12. Match List-I with List-II

List-I (Material)

List-II (Susceptibility χ)

A. Diamagnetic

I. $\chi = 0$

B. Ferromagnetic

II. $0 > \chi \geq -1$

C. Paramagnetic

III. $\chi \gg 1$

D. Non-magnetic

IV. $0 > \chi > \epsilon$ (a small positive number)

Choose the correct answer from the options given below:

- (1) A-II, B-I, C-III, D-IV
- (2) A-III, B-II, C-I, D-IV
- (3) A-IV, B-III, C-II, D-I
- (4) A-II, B-III, C-IV, D-I

13. Match List-I with List II.

List - I

List - II

(Spectral Lines of Hydrogen for transitions from)

(Wavelengths (nm))

A. $n_2 = 3$ to $n_1 = 2$

I. 410.2

B. $n_2 = 4$ to $n_1 = 2$

II. 434.1

C. $n_2 = 5$ to $n_1 = 2$

III. 656.3

D. $n_2 = 6$ to $n_1 = 2$

IV. 486.1

Choose the correct answer from the options given below:

- (1) A-III, B-IV, C-II, D-I
- (2) A-IV, B-III, C-I, D-II
- (3) A-I, B-II, C-III, D-IV
- (4) A-II, B-I, C-IV, D-III

14. Given below are two statements:

Statement I : Atoms are electrically neutral as they contain equal number of positive and negative charges.

Statement II : Atoms of each element are stable and emit their characteristic spectrum.

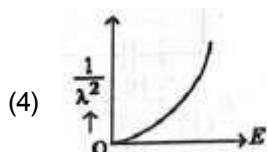
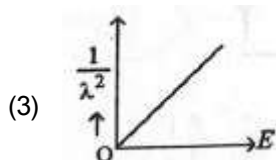
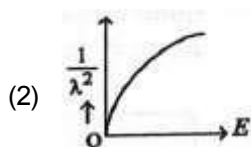
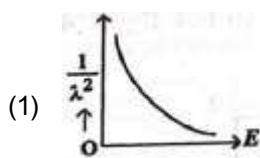
In the light of the above statements, choose the most appropriate answer from the options given below:

- (1) Both statement I and Statement II are incorrect
- (2) Statement I is correct but Statement II is incorrect
- (3) Statement I is incorrect but Statement II is correct
- (4) Both Statement I and Statement II are correct.

15. An unpolarised light beam strikes a glass surface at Brewster's angle. Then:

- (1) The refracted light will be completely polarised
- (2) both the reflected and refracted light will be completely polarised
- (3) the reflected light will be completely polarised but the refracted light will be partially polarised.
- (4) the reflected light will be partially polarised.

16. The graph which shows the variation of $\left(\frac{1}{\lambda^2}\right)$ and its kinetic energy, E is (where λ is de Broglie wavelength of a free particle):



17. A particle moving with uniform speed in a circular path maintains:

- (1) constant acceleration
- (2) constant velocity but varying acceleration
- (3) varying velocity and varying acceleration
- (4) constant velocity

18. If c is the velocity of light in free space the correct statements about photon among the following are:

A. The energy of a photon is $E = hv$

B. The velocity of a photon is c .

C. The momentum of a photon, $p = \frac{hv}{c}$

D. In a photon-electron collision, both total energy and total momentum are conserved.

E. Photon possesses positive charge.

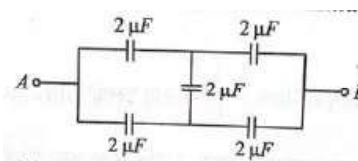
Choose the correct answer from the options given below:

- (1) A, B, C and D only
- (2) A, C and D only
- (3) A, B, D and E only
- (4) A and B only

19. ${}_{82}^{290}\text{X} \xrightarrow{\alpha} \text{Y} \xrightarrow{e^+} \text{Z} \xrightarrow{\beta^-} \text{P} \xrightarrow{e^-} \text{Q}$ In the nuclear emission stated above, the mass number and atomic number of the product Q respectively, are:

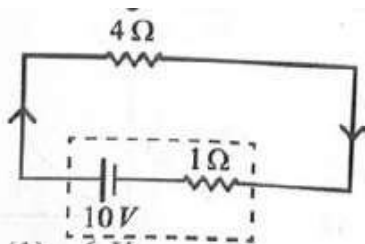
- (1) 286, 80
- (2) 288, 82
- (3) 286, 81
- (4) 280, 81

20. In the following circuit, the equivalent capacitance between terminal A and terminal B is:

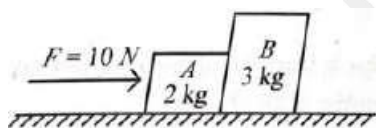


- (1) $1\mu\text{F}$
- (2) $0.5\mu\text{F}$
- (3) $4\mu\text{F}$
- (4) $2\mu\text{F}$

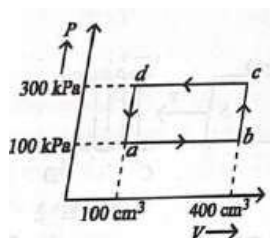
21. The terminal voltage of the battery, whose emf is 10V and internal resistance 1Ω , when connected through an external resistance of 4Ω as shown in the figure is:



- (1) 6 V
(2) 8 V
(3) 10 V
(4) 4 V
22. If the monochromatic source in Young's double slit experiment is replaced by white light, then:
- (1) there will be a central dark fringe surrounded by a few coloured fringes.
(2) there will be a central bright white fringe surrounded by a few coloured fringes.
(3) all bright fringes will be of equal width.
(4) interference pattern will disappear.
23. A horizontal force 10 N is applied to a block A as shown in figure. The mass of blocks A and B are 2 kg and 3 kg, respectively. The blocks slide over a frictionless surface. The force exerted by block A on block B is:



- (1) 4 N
(2) 6 N
(3) 10 N
(4) zero
24. A thermodynamic system is taken through the cycle abcda. The work done by the gas along the path bc is:

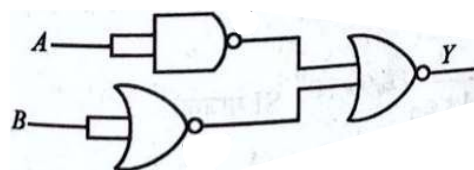


- (1) 30 J
(2) -90 J
(3) -60 J
(4) zero

25. The maximum elongation of a steel wire of 1 m length if the elastic limit of steel and its Young's modulus, respectively, are $8 \times 10^8 \text{ Nm}^{-2}$ and $2 \times 10^{11} \text{ Nm}^{-2}$ is:

- (1) 0.4 mm
(2) 40 mm
(3) 8 mm
(4) 4 mm

26. The output (Y) of the given logic gate is similar to the output of an/a :

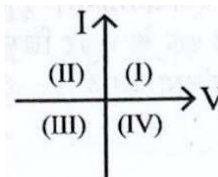


- (1) NOR gate
(2) OR gate
(3) AND gate
(4) NAND gate

27. Two bodies A and B of same mass undergo completely inelastic one dimensional collision. The body A moves with velocity v_1 while body B is at rest before collision. The velocity of the system after collision is v_2 . The ratio $v_1 : v_2$ is :

- (1) 2 : 1
(2) 4 : 1
(3) 1 : 4
(4) 1 : 2

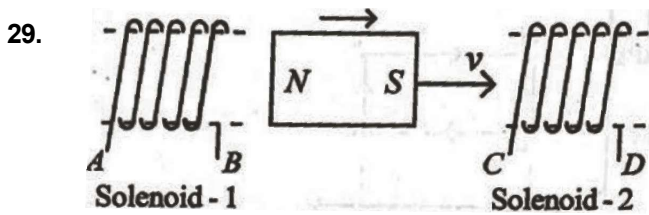
28. Consider the following statements A and B and identify the correct answer :



A. For a solar-cell, the I-V characteristics lies in the IV quadrant of the given graph.

B. In a reverse biased pn junction diode, the current measured in (μA), is due to majority charge carriers.

- (1) A is incorrect but B is correct.
(2) Both A and B are correct.
(3) Both A and B are incorrect.
(4) A is correct but B is incorrect.



In the above diagram, a strong bar magnet is moving towards solenoid-2 from solenoid-1. The direction of induced current in solenoid-1 and that in solenoid-2, respectively, are through directions:

- (1) BA and CD
- (2) AB and CD
- (3) BA and DC
- (4) AB and DC

30. Given below are two statements: one is labelled as Assertion A and the other is labelled as Reason R.

Assertion A : The potential (V) at any axial point, at 2 m distance (r) from the centre of the dipole of dipole moment vector \vec{p} of magnitude 4×10^{-6} Cm, is $\pm 9 \times 10^3$ V.

(Take $\frac{1}{4\pi\epsilon_0} = 9 \times 10^9$ SI units)

Reason R : $V = \pm \frac{2P}{4\pi\epsilon_0 r^2}$, where r is the distance

of any axial point, situated at 2 m from the centre of the dipole.

In the light of the above statements, choose the correct answer from the options given below:

- (1) Both A and R are true and R is NOT the correct explanation of A.
- (2) A is true but R is false.
- (3) A is false but R is true.
- (4) Both A and R are true and R is the correct explanation of A.

31. At any instant of time t, the displacement of any particle is given by $2t - 1$ (SI unit) under the influence of force of 5N. The value of instantaneous power is (in SI unit) :

- (1) 5
- (2) 7
- (3) 6
- (4) 10

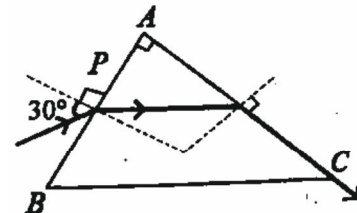
32. In a vernier calipers, (N + 1) divisions of vernier scale coincide with N divisions of main scale. If 1 MSD represents 0.1 mm, the vernier constant (in cm) is :

- (1) $\frac{1}{100(N+1)}$
- (2) 100 N
- (3) 10 (N + 1)
- (4) $\frac{1}{10N}$

33. The moment of inertia of a thin rod about an axis passing through its mid point and perpendicular to the rod is 2400 g cm^2 . The length of the 400 g rod is nearly :

- (1) 17.5 cm
- (2) 20.7 cm
- (3) 72.0 cm
- (4) 8.5 cm

34. A light ray enters through a right angled prism at point P with the angle of incidence 30° as shown in figure. It travels through the prism parallel to its base BC and emerges along the face AC. The refractive index of the prism is :



- (1) $\frac{\sqrt{5}}{2}$
- (2) $\frac{\sqrt{3}}{4}$
- (3) $\frac{\sqrt{3}}{2}$
- (4) $\frac{\sqrt{5}}{4}$

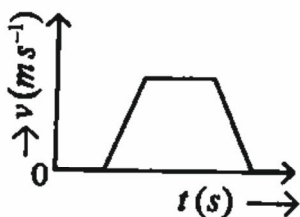
35. The mass of a planet is $\frac{1}{10}$ th that of the earth and its diameter is half that of the earth. The acceleration due to gravity on that planet is :

- (1) 9.8 m s^{-2}
- (2) 4.9 m s^{-2}
- (3) 3.92 m s^{-2}
- (4) 19.6 m s^{-2}

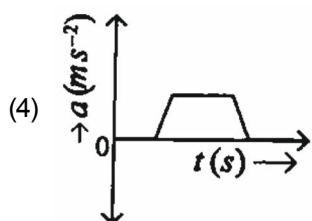
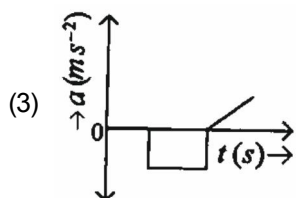
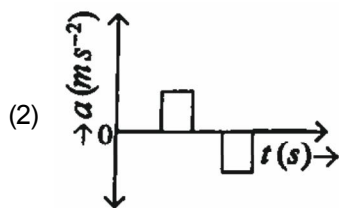
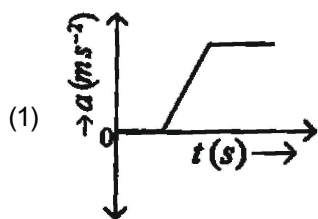
36. The property which is not of an electromagnetic wave travelling in free space is that :

- (1) the energy density in electric field is equal to energy density in magnetic field.
- (2) they travel with a speed equal to $\frac{1}{\sqrt{\mu_0 \epsilon_0}}$.
- (3) they originate from charges moving with uniform speed.
- (4) They are transverse in nature.

37. The velocity (v) – time (t) plot of the motion of a body is shown below :



The acceleration (a) – time (t) graph that best suits this motion is :



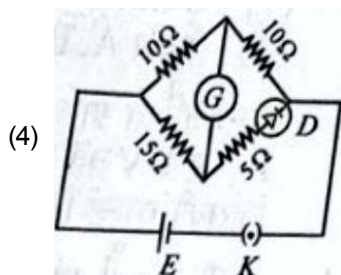
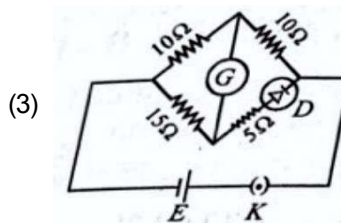
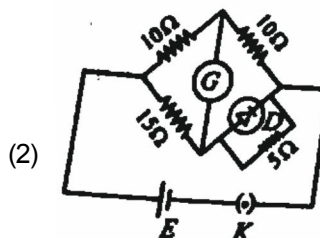
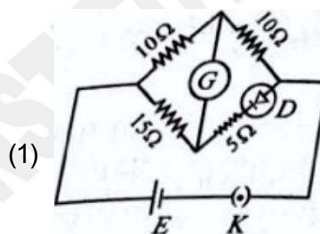
38. A metallic bar of Young's modulus, $0.5 \times 10^{11} \text{ Nm}^{-2}$ and coefficient of linear thermal expansion $10^{-5} \text{ }^\circ\text{C}^{-1}$, then 1 m and area of cross-section 10^{-3} m^2 is heated from 0°C to 100°C without expansion or bending. The compressive force developed in it is :

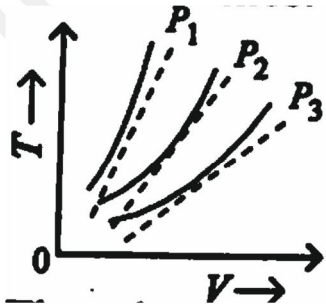
- (1) $50 \times 10^3 \text{ N}$
- (2) $100 \times 10^3 \text{ N}$
- (3) $2 \times 10^3 \text{ N}$
- (4) $5 \times 10^3 \text{ N}$

39. If the mass of the bob in a simple pendulum is increased to thrice its original mass and its length is made half its original length, then the new time period of oscillation is $x/2$ times its original time period. Then the value of x is :

- (1) $\sqrt{2}$
- (2) $2\sqrt{3}$
- (3) 4
- (4) $\sqrt{3}$

40. Choose the correct circuit which can achieve the bridge balance.

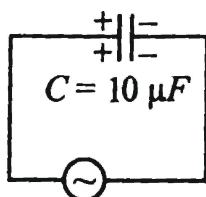


41. A force defined by $F = \alpha t^2 + \beta t$ acts on a particle at a given time t . The factor which is dimensionless, if α and β are constants, is :
- (1) $\alpha t / \beta$
 - (2) $\alpha \beta t$
 - (3) $\alpha \beta / t$
 - (4) $\beta t / \alpha$
42. A parallel plate capacitor is charged by connecting it to a battery through a resistor. If I is the current in the circuit, then in the gap between the plates :
- (1) displacement current of magnitude equal to I flows in the same direction as I .
 - (2) displacement current of magnitude equal to I flows in a direction opposite to that of I .
 - (3) displacement current of magnitude greater than I flows but can be in any direction.
 - (4) there is no current.
43. An iron bat of length L has magnetic moment M . It is bent at the middle of its length such that the two arms make an angle 60° with each other. The magnetic moment of this new magnet is :
- (1) $M/2$
 - (2) M
 - (3) $M/\sqrt{3}$
 - (4) M
44. The minimum energy required to launch a satellite of mass m from the surface of earth of mass M and radius R in a circular orbit at an altitude of $2R$ from the surface of the earth is
- (1) $\frac{2GmM}{3R}$
 - (2) $\frac{GmM}{2R}$
 - (3) $\frac{GmM}{3R}$
 - (4) $\frac{5GmM}{6R}$
45. If the plates of a parallel plate capacitor connected to a battery are moves close to each other, then
- A. the charge stored in it, increases.
 - B. the energy stored in it, decreases.
 - C. its capacitance increases.
 - D. the ratio of charge to its potential remains the same.
 - E. the product of charge and voltage increases,
- Choose the most appropriate answer from the given below:
- (1) A, C and E only
 - (2) B, D and E only
 - (3) A, B and C only
 - (4) A, B and E only
46. The following graph represents the T-V curves of an ideal gas (where T is the temperature and V the volume) at three pressures P_1 , P_2 and P_3 compared with those of Charles's law represented as dotted lines.
- 
- Then the correct relation is
- (1) $P_1 > P_3 > P_2$
 - (2) $P_2 > P_1 > P_3$
 - (3) $P_1 > P_2 > P_3$
 - (4) $P_3 > P_2 > P_1$
47. Two heaters A and B have power rating of 1 kW and 2kW, respectively. Those two are first connected in series and then in parallel to a fixed power source. Then ratio of power outputs for these two cases is :
- (1) 2 : 9
 - (2) 1 : 2
 - (3) 2 : 3
 - (4) 1 : 1

48. A sheet is placed on a horizontal surface in front of a strong magnetic pole. A force is needed to:
- A. hold the sheet there if it is magnetic.
 - B. hold the sheet there if it is non-magnetic.
 - C. move the sheet away from the pole with uniform velocity if it is conducting.
 - D. move the sheet away from the pole with uniform velocity if it is both, non-conducting and non-polar.

Choose the correct statement(s) from the options given below:

- (1) A and C only
 - (2) A, C and D only
 - (3) C only
 - (4) B and D only
49. A small telescope has an objective of focal length 140 cm and an eye piece of focal length 5.0 cm. The magnifying power of telescope for viewing a distant object is
- (1) 28
 - (2) 17
 - (3) 32
 - (4) 34
50. A $10\mu\text{F}$ capacitor is connected to a 210 V, 50 Hz source as shown in figure. The peak current in the circuit is nearly ($\pi = 3.14$) :



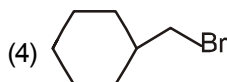
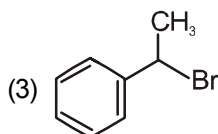
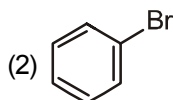
- (1) 0.93 A
- (2) 1.20 A
- (3) 0.35 A
- (4) 0.58 A



SECTION-A

54. Intramolecular hydrogen bonding is present in :

51. The compound that will undergo S_N1 reaction with the fastest rate is:



52. The highest number of helium atoms is in:

(1) 4 u of helium

(2) 4 g of helium

(3) 2.271098 L of the helium at STP

(4) 4 mol of helium

53. In which of the following processes entropy increases?

(A) A liquid evaporates to vapour.

(B) Temperature of crystalline solid lowered from 130 K to 0 K

(C) $2 \text{NaHCO}_{3(s)} \rightarrow \text{Na}_2\text{CO}_{3(s)} + \text{CO}_{2(g)} + \text{H}_2\text{O}_{(g)}$

(D) $\text{Cl}_{2(g)} \rightarrow 2 \text{Cl}_{(g)}$

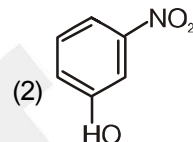
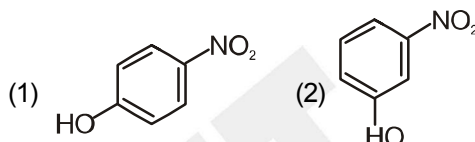
Choose the correct answer from the options given below:

(1) A, B and D

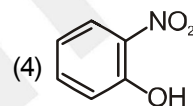
(2) A, C and D

(3) C and D

(4) A and C



(3) HF



55. The energy of an electron in the ground state ($n=1$) for He^+ ion is $-x$ J then that for an electron in $n=2$ state for Be^{3+} ion in J is :

(1) $-\frac{x}{9}$

(2) $-4x$

(3) $-\frac{4}{9}x$

(4) $-x$

56. The E° value for the $\text{Mn}^{3+}/\text{Mn}^{2+}$ couple is more positive than that of $\text{Cr}^{3+}/\text{Cr}^{2+}$ or $\text{Fe}^{3+}/\text{Fe}^{2+}$ due to change of :

(1) d^5 to d^2 configuration

(2) d^4 to d^5 configuration

(3) d^3 to d^5 configuration

(4) d^5 to d^4 configuration

57. A compound with a molecular formula of C_6H_{14} has two tertiary carbons. Its IUPAC name is :

(1) 2-methylpentane

(2) 2,3-dimethylbutane

(3) 2,2-dimethylbutane

(4) n-hexane



58. Given below are two statements:

Statement I : The boiling point of three isomeric pentanes follows the order

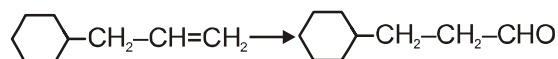
n-pentane > isopentane > neopentane

Statement II : When branching increases, the molecule attains a shape of sphere. This results in smaller surface area for contact, due to which the intermolecular forces between the spherical molecules are weak, thereby lowering the boiling point.

In the light of the above statements, choose the most appropriate answer from the options given below:

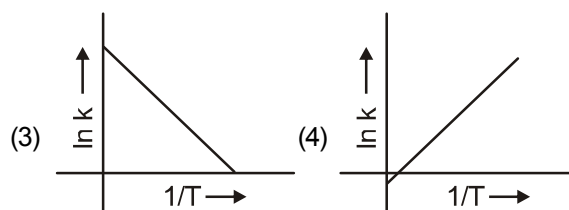
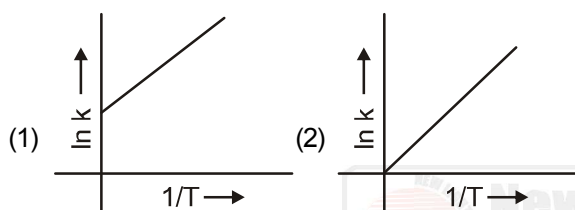
- (1) Both Statement I and Statement II are incorrect.
- (2) Statement I is correct but Statement II is incorrect.
- (3) Statement I is incorrect but Statement II is correct.
- (4) Both Statement I and Statement II are correct.

59. Identify the correct reagents that would bring about the following transformation.

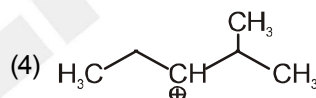
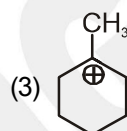
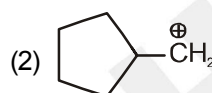
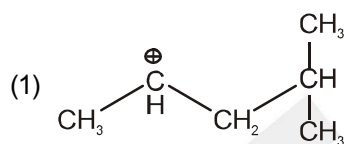


- (1) (i) BH_3
(ii) $\text{H}_2\text{O}_2/\overset{\ominus}{\text{O}}\text{H}$
(iii) PCC
- (2) (i) BH_3
(ii) $\text{H}_3\text{O}^{\oplus}$
(iii) alk, KMnO_4
(iv) $\text{H}_3\text{O}^{\oplus}$
- (3) (i) $\text{H}_2\text{O}/\text{H}^+$
(ii) PCC
- (4) (i) $\text{H}_2\text{O}/\text{H}^+$
(ii) CrO_3

60. Which plot of $\ln k$ vs $\frac{1}{T}$ is consistent with Arrhenius equation?



61. The most stable carbocation among the following is:



62. Match List I with List II.

List I (Process)	List II (Conditions)
(A) Isothermal process	I. No heat exchange
(B) Isochoric process	II. Carried out at constant temperature
(C) Isobaric process	III. Carried out at constant volume
(D) Adiabatic process	IV. Carried out at constant pressure

Choose the correct answer from the options given below:

- (1) A-IV, B-II, C-III, D-I
- (2) A-I, B-II, C-III, D-IV
- (3) A-II, B-III, C-IV, D-I
- (4) A-IV, B-III, C-II, D-I

63. Match List I with List II.

List I (Complex)	List II (Types of isomerism)
(A) $[\text{Co}(\text{NH}_3)_5(\text{NO}_2)]\text{Cl}_2$	I. Solvate isomerism
(B) $[\text{Co}(\text{NH}_3)_5(\text{SO}_4)]\text{Br}$	II. Linkage isomerism
(C) $[\text{Co}(\text{NH}_3)_6][\text{Cr}(\text{CN})_6]$	III. Ionization isomerism
(D) $[\text{Co}(\text{H}_2\text{O})_6]\text{Cl}_3$	IV. Coordination isomerism

Choose the correct answer from the options given below:

- (1) A-I, B-III, C-IV, D-II
- (2) A-I, B-IV, C-III, D-II
- (3) A-II, B-IV, C-III, D-I
- (4) A-II, B-III, C-IV, D-I

64. 1 gram of sodium hydroxide was treated with 25 mL of 0.75 M HCl solution, the mass of sodium hydroxide left unreacted is equal to

- (1) 250 mg
- (2) zero mg
- (3) 200 mg
- (4) 750 mg

65. Which reaction is NOT a redox reaction?

- (1) $2\text{KClO}_3 + \text{I}_2 \rightarrow 2\text{KIO}_3 + \text{Cl}_2$
- (2) $\text{H}_2 + \text{Cl}_2 \rightarrow 2\text{HCl}$
- (3) $\text{BaCl}_2 + \text{Na}_2\text{SO}_4 \rightarrow \text{BaSO}_4 + 2\text{NaCl}$
- (4) $\text{Zn} + \text{CuSO}_4 \rightarrow \text{ZnSO}_4 + \text{Cu}$

66. For the reaction $2\text{A} \rightleftharpoons \text{B} + \text{C}$, $K_c = 4 \times 10^{-3}$. At a given time, the composition of reaction mixture is :

$$[\text{A}] = [\text{B}] = [\text{C}] = 2 \times 10^{-3} \text{M.}$$

Then, which of the following is correct?

- (1) Reaction has a tendency to go in forward direction
- (2) Reaction has a tendency to go in backward direction
- (3) Reaction has gone to completion in forward direction
- (4) Reaction is at equilibrium.

67. Match List I with List II.

List I (Compound)	List II (Shape/geometry)
(A) NH_3	I. Trigonal Pyramidal
(B) BrF_5	II. Square Planar
(C) XeF_4	III. Octahedral
(D) SF_6	IV. Square Pyramidal

Choose the correct answer from the options given below:

- (1) A-II, B-IV, C-III, D-I
- (2) A-III, B-IV, C-I, D-II
- (3) A-II, B-III, C-IV, D-I
- (4) A-I, B-IV, C-II, D-III

68. On heating, some solid substance change from solid to vapour state without passing through liquid state. The technique used for the purification of such solid substances based on the above principle is known as :

- (1) Sublimation
- (2) Distillation
- (3) Chromatography
- (4) Crystallization

69. In which of the following equilibria, K_p and K_c are NOT equal:

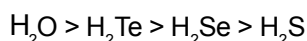
- (1) $\text{H}_{2(\text{g})} + \text{I}_{2(\text{g})} \rightleftharpoons 2\text{HI}_{(\text{g})}$
- (2) $\text{CO}_{(\text{g})} + \text{H}_2\text{O}_{(\text{g})} \rightleftharpoons \text{CO}_{2(\text{g})} + \text{H}_{2(\text{g})}$
- (3) $2\text{BrCl}_{(\text{g})} \rightleftharpoons \text{Br}_{2(\text{g})} + \text{Cl}_{2(\text{g})}$
- (4) $\text{PCl}_{5(\text{g})} \rightleftharpoons \text{PCl}_{3(\text{g})} + \text{Cl}_{2(\text{g})}$

70. Among group 16 elements, which one does NOT show -2 oxidation state?

- (1) Se
- (2) Te
- (3) Po
- (4) O

71. Given below are two statements:

Statement I : The boiling point of hydrides of Group 16 elements follow the order



Statement II : On the basis of molecular mass, H_2O is expected to have lower boiling point than the other members of the group but due to the presence of extensive H-bonding in H_2O , it has higher boiling point.

In the light of the above statements, choose the most appropriate answer from the options given below:

- (1) Both Statement I and Statement II are false
- (2) Statement I is true but Statement II is false
- (3) Statement I is false but Statement II is true
- (4) Both Statement I and Statement II are true

72. Given below are two statements:

Statement I : Aniline does not undergo Friedel-Crafts alkylation reaction.

Statement II : Aniline cannot be prepared through Gabriel synthesis.

In the light of the above statements, choose the correct answer from the options given below:

- (1) Both Statement I and Statement II are false
- (2) Statement I is incorrect but Statement II is false
- (3) Statement I is incorrect but Statement II is true
- (4) Both Statement I and Statement II are true

73. Given below are two statements:

Statement I : Both $[\text{Co}(\text{NH}_3)_6]^{3+}$ and $[\text{CoF}_6]^{3-}$ complexes are octahedral but differ in their magnetic behaviour.

Statement II : $[\text{Co}(\text{NH}_3)_6]^{3+}$ is diamagnetic and where as $[\text{CoF}_6]^{3-}$ is paramagnetic.

In the light of the above statements, choose the correct answer from the options given below:

- (1) Both Statement I and Statement II are false
- (2) Statement I is incorrect but Statement II is false
- (3) Statement I is incorrect but Statement II is true
- (4) Both Statement I and Statement II are true

74. Fehling's solution 'A' is:

- (1) alkaline copper sulphate
- (2) alkaline solution of sodium potassium tartrate (Rochelle's salt)
- (3) aqueous sodium citrate
- (4) aqueous copper sulphate

75. The Henry's law constant (K_H) value of three gases (A,B,C) in water are 145, 2×10^{-5} and 35 kbar, respectively. The solubility of these gases in water follow the order:

- (1) $B > C > A$
- (2) $A > C > B$
- (3) $A > B > C$
- (4) $B > A > C$

76. Match List I with List II.

List I (Conversion)	List II (Number of Faraday required)
(A) 1 Mol of H_2O to O_2	I. 3F
(B) 1 Mol of MnO_4^- to Mn^{2+}	II. 2F
(C) 1.5 mol of Ca from molten CaCl_2	III. 1F
(D) 1 Mol of FeO to Fe_2O_3	IV. 5F

Choose the correct answer from the options given below:

- (1) A-III, B-IV, C-I, D-II
- (2) A-II, B-III, C-I, D-IV
- (3) A-III, B-IV, C-II, D-I
- (4) A-II, B-IV, C-I, D-III

77. Match List I with List II.

List I Quantum Number	List II Information provided
(A) m_l	I. shape of orbital
(B) m_s	II. size of orbital
(C) l	III. orientation of orbital
(D) n	IV. orientation of spin of electron

Choose the correct answer from the options given below:

- (1) A-III, B-IV, C-I, D-II
- (2) A-III, B-IV, C-II, D-I
- (3) A-II, B-I, C-IV, D-III
- (4) A-I, B-III, C-II, D-IV



78. 'Spin only' magnetic moment is same for which of the following ions?

- (A) Ti^{3+} (B) Cr^{2+}
(C) Mn^{2+} (D) Fe^{2+}
(E) Sc^{+3}

Choose the most appropriate answer from the options given below:

- (1) A and E only (2) B and C only
(3) A and D only (4) B and D only

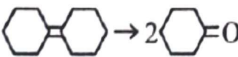
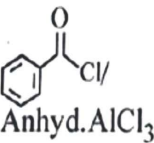
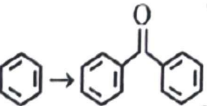
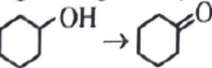
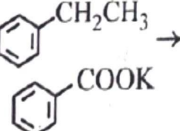
79. The reagents with which glucose does not react to give the corresponding tests/products are:

- (A) Tollen's reagent
(B) Schiff's reagent
(C) HCN
(D) NH_2OH
(E) $NaHSO_3$

Choose the most appropriate answer from the options given below:

- (1) A and D (2) B and E
(3) E and D (4) B and C

80. Match List I with List II.

List I (Reactions)	List II (Reagents/ Condition)
A. 	I. 
B. 	II. CrO_3
C. 	III. $KMnO_4 / KOH, \Delta$
D. 	IV. (i) O_3 (ii) $Zn-H_2O$

Chose the correct answer from the options given below

- (1) A-III, B-I, C-II, D-IV
(2) A-IV, B-I, C-II, D-III
(3) A-I, B-IV, C-II, D-III
(4) A-IV, B-I, C-III, D-II

81. Arrange the following elements in increasing order of electronegativity :

N, O, F, C, Si

Choose the correct answer from the options given below :

- (1) $Si < C < O < N < F$
(2) $O < F < N < C < Si$
(3) $F < O < N < C < Si$
(4) $Si < C < N < O < F$

82. Match List I with List II.

List I (Molecule)	List II (Number and types of bond/s between two carbon atoms)
A. Ethane	I. one σ -bond and two π -bonds.
B. Ethene	II. two π -bonds
C. Carbon molecule, C_2	III. one σ -bond
D. Ethyne	IV. one σ -bond and one π -bond

Choose the correct answer from the options given below :

- (1) A-IV, B-III, C-II, D-I
(2) A-III, B-IV, C-II, D-I
(3) A-III, B-IV, C-I, D-II
(4) A-I, B-IV, C-II, D-III

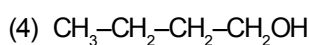
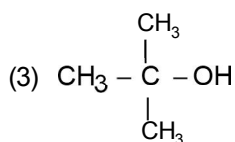
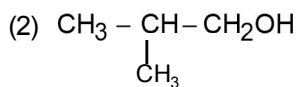
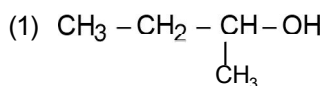
83. Arrange the following elements in increasing order of first ionization enthalpy :

Li, Be, B, C, N

Choose the correct answer from the options given below :

- (1) $Li < B < Be < C < N$
(2) $Li < Be < C < B < N$
(3) $Li < Be < N < B < C$
(4) $Li < Be < B < C < N$

84. Which one of the following alcohols reacts instantaneously with Lucas reagent :



85. Activation energy of any chemical reaction can be calculated if one knows the value of :

- (1) probability of collision.
- (2) orientation of reactant molecules during collision.
- (3) rate constant at two different temperatures.
- (4) rate constant at standard temperature.

SECTION-B

86. Identify the correct answer :

- (1) BF_3 has non-zero dipole moment
- (2) Dipole moment of NF_3 is greater than that of NH_3
- (3) Three canonical form can be drawn for CO_3^{2-} ion.
- (4) Three resonance structures can be drawn for ozone.

87. The pair of lanthanoid ions which are diamagnetic is :

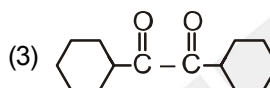
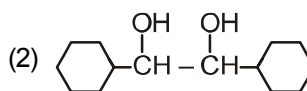
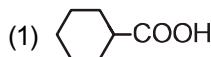
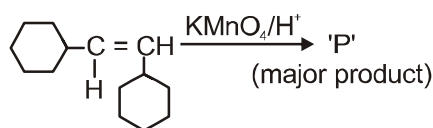
- (1) Ce^{3+} and Eu^{2+}
- (2) Gd^{3+} and Eu^{3+}
- (3) Pm^{3+} and Sm^{3+}
- (4) Ce^{4+} and Yb^{2+}

88. The rate of a reaction quadruples when temperature changes from 27°C to 57°C . Calculate the energy of activation.

Given $R = 8.314 \text{ J K}^{-1} \text{ mol}^{-1}$, $\log 4 = 0.6021$

- (1) 380.4 kJ/mol
- (2) 3.80 kJ/mol
- (3) 3804 kJ/mol
- (4) 38.04 kJ/mol

89. For the given reaction :

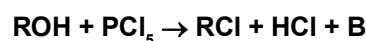
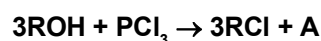


90. The work done during reversible isothermal expansion of one mole of hydrogen gas at 25°C from pressure of 20 atmosphere to 10 atmosphere is :

(Given $R = 2.0 \text{ cal K}^{-1} \text{ mol}^{-1}$)

- (1) -413.14 calories
- (2) 413.14 calories
- (3) 100 calories
- (4) 0 calorie

91. The products A and B obtained in the following reactions, respectively are :



- (1) POCl_3 and H_3PO_4
- (2) H_3PO_4 and POCl_3
- (3) H_3PO_3 and POCl_3
- (4) POCl_3 and H_3PO_3

92. Given below are certain cations, Using inorganic qualitative analysis, arrange them in increasing group number from 0 to VI

- | | |
|---------------------|---------------------|
| A. Al^{3+} | B. Cu^{2+} |
| C. Ba^{2+} | D. Co^{2+} |
| E. Mg^{2+} | |

Choose the correct answer from the options given below :

- (1) B, C, A, D, E
- (2) E, C, D, B, A
- (3) E, A, B, C, D
- (4) B, A, D, C, E

93. The plot of osmotic pressure (Π) vs concentration (mol L^{-1}) for a solution gives a straight line with slope $25.73 \text{ L bar mol}^{-1}$. The temperature at which the osmotic pressure measurement is done is :

(Use $R = 0.083 \text{ L bar mol}^{-1} \text{ K}$)

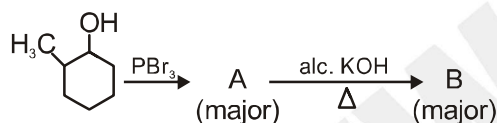
- (1) 310°C
- (2) 25.73°C
- (3) 12.05°C
- (4) 37°C

94. A compound X contains 32% of A, 20% of B and remaining percentage of C. Then, the empirical formula of X is :

(Given atomic masses of $A=64$, $B=40$, $C=32 \text{ u}$)

- (1) ABC_3
- (2) AB_2C_2
- (3) ABC_4
- (4) A_2BC_2

95. Major product A and B formed in the following reaction sequence, are :



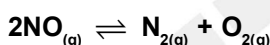
- (1) A = CC1(Br)CCCCC1 ; B = CC1=CCCCC1
- (2) A = CC1(O)C(Br)CCCC1 ; B = CC1(O)C=CCCC1
- (3) A = CC1(O)C(Br)CCCC1 ; B = CC1=CCCCC1
- (4) A = CC1(Br)CCCCC1 ; B = CC1=CCCCC1

96. During the preparation of Mohr's salt solution (Ferrous ammonium sulphate), which of the following acid is added to prevent hydrolysis of Fe^{2+} ion :

- (1) concentrated sulphuric acid
- (2) dilute nitric acid
- (3) dilute sulphuric acid
- (4) dilute hydrochloric acid

97. Consider the following reaction in a sealed vessel at equilibrium with concentrations of

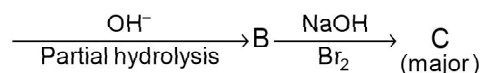
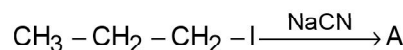
$$\text{N}_2 = 3.0 \times 10^{-3} \text{ M}, \text{O}_2 = 4.2 \times 10^{-3} \text{ M} \text{ and } \text{NO} = 2.8 \times 10^{-3} \text{ M.}$$



If 0.1 mol L^{-1} of $\text{NO}_{(g)}$ is taken in a closed vessel, what will be degree of dissociation (α) of $\text{NO}_{(g)}$ at equilibrium :

- (1) 0.0889
- (2) 0.8889
- (3) 0.717
- (4) 0.00889

98. Identify the major product C formed in the following reaction sequence :



- (1) butylamine
- (2) butanamide
- (3) α -bromobutanoic acid
- (4) propylamine

99. Mass in grams of copper deposited by passing 9.6487 A current through a voltmeter containing copper sulphate solution for 100 seconds is :

(Given : Molar mass of $\text{Cu} : 63 \text{ g mol}^{-1}$, $1F=96487\text{C}$)

- (1) 0.315 g
- (2) 31.5 g
- (3) 0.0315 g
- (4) 3.15 g

100. Given below are two statements :

Statement I : $[\text{Co}(\text{NH}_3)_6]^{3+}$ is a homoleptic complex whereas $[\text{Co}(\text{NH}_3)_4\text{Cl}_2]^+$ is a heteroleptic complex.

Statement II : Complex $[\text{Co}(\text{NH}_3)_6]^{3+}$ has only one kind of ligands but $[\text{Co}(\text{NH}_3)_4\text{Cl}_2]^+$ has more than one kind of ligands.

In the light of the above statements, choose the correct answer from the options given below :

- (1) Both Statement I and Statement II are false.
- (2) Statement I is true but Statement II is false.
- (3) Statement I is false but Statement II is true.
- (4) Both Statement I and Statement II are true.



Botany: Section –A (Q. No. 101 to 135)

101. Lecithin, small molecular weight organic compound found in living tissues, is an example of:

- (1) Phospholipids
- (2) Glycerides
- (3) Carbohydrates
- (4) Amino acids

102. These are regarded as major causes of biodiversity loss:

- A. Over exploitation
- B. Co-extinction
- C. Mutation
- D. Habitat loss and fragmentation
- E. Migration

Choose the correct option

- (1) A, B, C and D only
- (2) A, B and E only
- (3) A, B and D only
- (4) A, C and D only

103. Which one of the following is not a criterion for classification of fungi

- (1) Mode of nutrition
- (2) Mode of spore formation
- (3) Fruiting body
- (4) Morphology of mycelium

104. A pink flowered snapdragon plant was crossed with a red flowered snapdragon plant. what type of phenotype/s is/are expected in the progeny?

- (1) Red flowered as well as pink flowered plants
- (2) Only pink flowered plants
- (3) Red, Pink as well as white flowered plants
- (4) Only red flowered plants

105. Which one of the following can be explained on the basis of Mendel's Law of dominance?

- A. Out of one pair of factors one is dominant and the other is recessive.
- B. Alleles do not show any expression and both the characters appear as such in F_2 generation
- C. Factors occur in pairs in normal diploid plants.
- D. The discrete unit controlling a particular character is called factor.
- E. The expression of only one of the parental characters is found in a monohybrid cross.

Choose the correct answer from the options given below:

- (1) A, C, D and E only
- (2) B, C and D only
- (3) A, B, C, D and E
- (4) A, B and C only

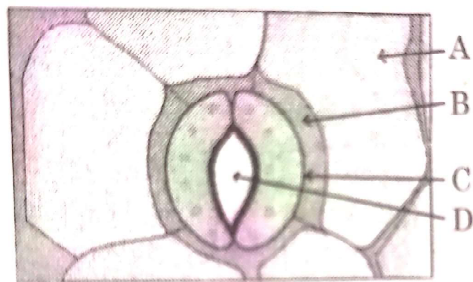
106. Tropical regions show greatest level of species richness because

- A. Tropical latitudes have remained relatively undisturbed for millions of years, hence more time was available for species diversification.
- B. Tropical environments are more seasonal.
- C. More solar energy is available in tropics.
- D. Constant environments promote niche specialization.
- E. Tropical environments are constant and predictable.

Choose the correct answer from the options given below:

- (1) A and B only
- (2) A, B and F only
- (3) A, B and D only
- (4) A, C, D and E only

107. In the given figure, which component has thin outer walls and highly thickened inner walls?



- (1) D (2) A
(3) B (4) C

108. The cofactor of the enzyme carboxypeptidase is:

- (1) Niacin (2) Flavin
(3) Haem (4) Zinc

109. Given below are two statements

Statement I: Chromosomes become gradually visible under light microscope during leptotene stage.

Statement II: The beginning of diplotene stage is recognized by dissolution of synaptonemal complex.

In the light of the above statements, choose the correct answer from the options given below:

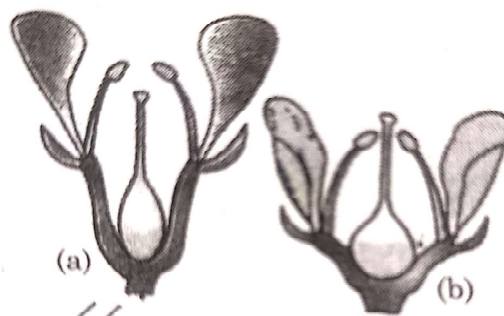
- (1) Both Statement I and Statement II are false
(2) Statement I is true but Statement II is false
(3) Statement I is false but Statement II is true
(4) Both Statement I and Statement II are true

110. What is the fate of a piece of DNA carrying only gene of interest which is transferred into an alien organism?

- A. The piece of DNA would be able to multiply itself independently in the progeny cells of the organism.
B. It may get integrated into the genome of the recipient.
C. It may multiply and be inherited along with the host DNA.
D. The alien piece of DNA is not an integral part of chromosome.
E. It shows ability to replicate Choose the correct answer from the options given below:

- (1) D and E only
(2) B and C only
(3) A and E only
(4) A and B only

111. Identify the type of flowers based on the position of calyx, corolla and androecium with respect to the ovary from the given figures (a) and (b)



- (1) (a) Hypogynous; (b) Epigynous
(2) (a) Perigynous; (b) Epigynous
(3) (a) Perigynous; (b) Perigynous
(4) (a) Epigynous; (b) Hypogynous

112. Match List I with List II

- | List I | List II |
|--|----------------|
| A. Two or more alternative forms of a gene | I. Back cross |
| B. Cross of F_1 progeny with homozygous recessive parent | II. Ploidy |
| C. Cross of F_1 progeny with any of the parents | III. Allele |
| D. Number of chromosome sets in plant | IV. Test cross |

Choose the correct answer from the options given below:

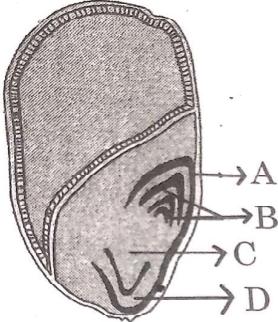
- (1) A-II, B-1, C-III, D-IV
(2) A-III, B-IV, C-1, D-II
(3) A-IV, B-III, C-II, D-I
(4) A-1, B-II, C-III, D-IV

113. Formation of interfascicular cambium from fully developed parenchyma cells is an example for

- (1) Redifferentiation
(2) Dedifferentiation
(3) Maturation
(4) Differentiation

114. Which of the following is an example of actinomorphic flower?

- (1) Cassia (2) Pisum
(3) Sesbania (4) Datura

115. Hind II always cuts DNA molecules at a particular point called recognition sequence and it consists of:
- (1) 6 bp (2) 4 bp
(3) 10 pb (4) 8 bp
116. Which of the following are required for the dark reaction of photosynthesis?
- A. Light B. Chlorophyll
C. CO₂ D. ATP
E. NADPH
- Choose the correct answer from the options given below:
- (1) B, C and D only
(2) C, D and E only
(3) D and E only
(4) A, B and C only
117. Given below are two statements: Statement I: Bt toxins are insect group specific and coded by a gene cry IAc. Statement II: Bt toxin exists as inactive protoxin in *B. thuringiensis*. However, after ingestion by the insect the inactive protoxin gets converted into active form due to acidic pH of the insect gut. In the light of the above statements, choose the correct answer from the options given below:
- (1) Both Statement I and Statement II are false
(2) Statement I is true but Statement II is false
(3) Statement I is false but Statement II is true
(4) Both Statement I and Statement II are true
118. The equation of Verhulst-Pearl logistic growth is
- $$\frac{dN}{dt} = rN \left[\frac{K - N}{K} \right]$$
- From this equation, K indicates:
- (1) Biotic potential
(2) Carrying capacity
(3) Population density
(4) Intrinsic rate of natural increase
119. The capacity to generate a whole plant from any cell of the plant is called:
- (1) Micropropagation
(2) Differentiation
(3) Somatic hybridization
(4) Totipotency
120. The type of conservation in which the threatened species are taken out from their natural habitat and placed in special setting where they can be protected and given special care is called;
- (1) Biodiversity conservation
(2) Semi-conservative method
(3) Sustainable development
(4) in-situ conservation
121. The lactose present in the growth medium of bacteria is transported to the cell by the action of:
- (1) Acetylase
(2) Permease
(3) Polymerase
(4) Beta-galactosidase
122. Spindle fibers attach to kinetochores of chromosomes during.
- (1) Metaphase
(2) Anaphase
(3) Telophase
(4) Prophase
123. Identify the part of the seed from the given figure which is destined to form root when the seed germinates.
- 
- (1) B
(2) C
(3) D
(4) A
124. A transcription unit in DNA is defined primarily by the three regions in DNA and these are with respect to upstream and down stream end.
- (1) Structural gene, Transposons, Operator gene
(2) Inducer, Repressor, Structural gene
(3) Promotor, Structural gene, Terminator
(4) Repressor, Operator gene, Structural gene
125. How many molecules of ATP and NADPH are required for every molecule of CO₂ fixed in the Calvin cycle?
- (1) 2 molecules of ATP and 2 molecules of NADPH
(2) 3 molecules of ATP and 3 molecules of NADPH
(3) 3 molecules of ATP and 2 molecules of NADPH
(4) 2 molecules of ATP and 3 molecules of NADPH

126. Given below are two statements:
Statement I : Parenchyma is living but collenchyma is dead tissue.
Statement II: Gymnosperms lack xylem vessels but presence of xylem vessels is the characteristic of angiosperms.
In the light of the above statements, choose the correct answer from the options given below:
(1) Both Statement I and Statement II are false
(2) Statement I is true but Statement II is false
(3) Statement I is false but Statement II is true
(4) Both Statement I and Statement II are true
127. Auxin is used by gradencers to prepare week-free lawns. But no damage in caused to grass an auxin.
(1) promotes abscission of inature leaves only.
(2) does not affect mature monocotyledonous plants.
(3) can help in cell division in grasses, to produce growth.
(4) promotes apical dominance.
128. In a plant, black seed color (BB/Bb) is dominant over white seed color (bb). In order to find out the genotype of the black seed plant, with which of the following genotype will you cross it?
(1) bb (2) Bb
(3) BB/Bb (4) BB
129. Inhibition of Succinic dehydrogenase enzyme by malonate is a classical example of:
(1) Feedback inhibition
(2) Competitive inhibition
(3) Enzyme activation
(4) Cofactor inhibition
130. Match List 1 with List II
- | List I | List II |
|-----------------------------|-------------------|
| A. Clostridium butylicum | I. Ethanol |
| B. Saccharamyces Cerevisiae | II. Streptokinase |
| C. Trichoderma Polysporum | III. Butyric Acid |
| D. Streptococcus sp. | IV. Cyclosporin-A |
- Choose the correct answer from the options given below:
(1) A-II, B-IV, C-III, D-I
(2) A-III, B-I, C-IV, D-II
(3) A-IV, B-I, C-III, D-II
(4) A-III, B-I, C-II, D-IV
131. List of endangered species was relases by–
(1) WWF
(2) FOAM
(3) IUCN
(4) GEAC
132. Match list I with List II
- | List I | List II |
|---------------------------|-------------------------------------|
| (1) Nucleous | I. Site of formation of glycolipid |
| (2) Centriole | II. Organization like the cartwheel |
| (3) Leucoplasts rebosomal | III. Site for active RNA synthesis |
| (4) Golgi apparatus | IV. For storing nutrients |
- Choose the correct answer from the options given below
(1) A-II, B-III, C-I, D-IV
(2) A-III, B-IV, C-II, D-I
(3) A-I, B-II, C-III, D-IV
(4) A-III, B-II, C-IV, D-I
133. Match List I with List II
- | List I | List II |
|-------------|------------------|
| A. Rhizopus | I. Mushroom |
| B. Ustilago | II. Smut Fungus |
| C. Puccinia | III. Bread mould |
| D. Agaricus | IV. Rust Fungus |
- Choose the correct answer from the options given below:
(1) A-I, B-III, C-II, D-IV
(2) A-III, B-II, C-I, D-IV
(3) A-IV, B-III, C-II, D-I
(4) A-III, B-II, C-IV, D-I
134. Identify the set of correct statements:
A. The flowers of Vallisneria are colour full and produce nectar.
B. The flowers of waterlily are not pollinated by water.
C. In most of water-pollinated species, the pollen grains are protected from wetting.
D. Pollen grains of some hydrophytes are long and ribbon like.
E. In some hydrophytes, the pollen grains are carried passively inside water
Choose the correct answer from the options given below:
(1) A, B, C and D only
(2) A, C, D and E only
(3) B, C, D and E only
(4) C, D and E only

135. Bulliform cells are responsible for
- (1) Protecting the plant from salt stress.
 - (2) Increased photosynthesis in monocots.
 - (3) Providing large spaces for storage of sugars.
 - (4) Inward curling of leaves in monocots.

Botany: Section –B (Q. No. 136 to 150)

136. Match List I with List II

List I	List II
(Types of stamens)	(Example)
A. Monoadelphous	I. Citrus
B. Diadelphous	II. Pea
C. Polyadelphous	III. Lily
D. Epiphyllous	IV. China-rose

Choose the correct answer from the options given below

- (1) A-IV, B-I, C-II, D-II
 - (2) A-I, B-II, C-IV, D-III
 - (3) A-III, B-I, C-IV, D-IV
 - (4) A-IV, B-II, C-I, D-III
137. Identify the step in tricarboxylic acid cycle, which does not involve oxidation of substrate.
- (1) Succinic acid → Malic acid
 - (2) Succinyl-CoA → Succinic acid
 - (3) Isocitrate → α -ketoglutaric acid
 - (4) Malic acid → Oxaloacetic acid
138. The DNA present in chloroplast is:
- (1) Circular, double stranded
 - (2) Linear, single stranded
 - (3) Circular, single stranded
 - (4) Linear, double stranded

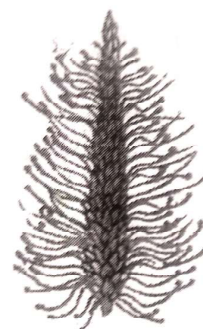
139. Match List I with List II

List I	List II
A. Frederick Griffith	I. Genetic code
B. Francois Jacob & Jacques Monod	II. Semi-conservative mode of DNA replication
C. Her Gobind Khorana	III. Transformation
D. Meselson & Stahl	IV. Lac operon

Choose the correct answer from the options given below:

- (1) A-III, B-IV, C-I, D-II
 - (2) A-II, B-III, C-IV, D-I
 - (3) A-IV, B-I, C-II, D-III
 - (4) A-III, B-II, C-I, D-IV
140. Which of the following are fused in somatic hybridization involving two varieties of plants?
- (1) Somatic embryos
 - (2) Protoplasts
 - (3) Pollens
 - (4) Callus

141. Identify the correct description about the given figure.



- (1) Water pollinated flowers showing stamens with mucilaginous covering
 - (2) Cleistogamous flowers showing autogamy.
 - (3) Compact inflorescence showing complete autogamy.
 - (4) Wind pollinated plant inflorescence showing flowers with well exposed stamens.
142. Given below are two statements:
- Statement I:** In C_3 plants, some O_2 binds to RuBisCO, hence CO_2 fixation is decreased.
- Statement II:** In C_4 plants, mesophyll cells show very little photorespiration while bundle sheath cells do not show photorespiration.
- In the light of the above statements, choose the correct answer from the options given below.
- (1) Both statement I and Statement II are false
 - (2) Statement I is true but statement II is false
 - (3) Statement I is false but statement II is true
 - (4) Both Statement I and Statement II are true
143. Match List I with list II

List I	List II
A. Robert May	I. Species – area relationship
B. Alexander von Humboldt	II. Long term ecosystem experiment using out door plots
C. Paul Ehrlich	III. Global species diversity at about 7 million
D. David Tilman	IV. Rivet popper hypothesis

Choose the correct answer from the options given below:

- (1) A-III, B-I, C-IV, D-II
 - (2) A-I, B-III, C-II, D-IV
 - (3) A-III, B-IV, C-II, D-I
 - (4) A-II, B-III, C-I, D-IV
144. In an ecosystem if the Net Primary productivity (NPP) of first trophic level is $100x$ ($kcal\ m^{-2}\ yr^{-1}$). what would be GPP (Gross primary productivity) of the third trophic level of the same ecosystem?
- (1) $x(kcal\ m^{-2})\ yr^{-1}$
 - (2) $10x(kcal\ m^{-2})\ yr^{-1}$
 - (3) $\frac{100x}{3x} (kcal\ m^{-2})\ yr^{-1}$
 - (4) $\frac{x}{10} (kcal\ m^{-2})\ yr^{-1}$

145. Which of the following statement is correct regarding the process of replication in *E. coli*?

- (1) The DNA dependent RNA polymerase catalyses polymerization in one direction, that is $\rightarrow 3$
- (2) The DNA dependent DNA polymerase catalyses polymerization in $5 \rightarrow 3$ as well as $3 \rightarrow 5$ direction.
- (3) The DNA dependent DNA polymerase catalyses polymerization in $5 \rightarrow 3$ direction
- (4) The DNA dependent DNA polymerase catalyses polymerization in one direction that $3 \rightarrow 5$

146. Match list 1 with list II

- | List I | List II |
|------------------------------|---|
| A. Citric acid cycle | I. Cytoplasm |
| B. Glycolysis | II. Mitochondrial matrix |
| C. Electron transport System | IV. Intermembrane space of mitochondria |
| D. Proton Gradient | V. Inner mitochondrial membrane |

Choose the correct answer from the options given below.

- (1) A-II, B-I, C-IV, D-III (2) A-III, B-IV, C-I, D-II
(3) A-IV, B-III, C-II, D-I (4) A-I, B-II, C-III, D-IV

147. Spraying sugarcane crop with which of the following plant growth regulators, increases the length of stem, thus increasing the yield?

- (1) Gibberellin
- (2) Cytokinin
- (3) Abscisic acid
- (4) Auxin

148. Read the following statements and choose the set of correct statements:

In the members of phaeophyceae.

- A. Asexual reproduction occurs usually by biflagellate zoospores
- B. Sexual reproduction is by oogamous method only.
- C. Stored food is in the form of carbohydrates which is either mannitol or laminarin.
- D. The major pigments found are chlorophyll a, c and carotenoids and xanthophyll.
- E. Vegetative cells have a cellulose wall usually covered on the outside by gelatins coating of algin.

Choose the correct answer from the options given below:

- (1) B, C, D and E only (2) A, C, D and E only
(3) A, B, C and E only (4) A, B, C and D only

149. Match List I with List II

- | List I | List II |
|-----------|---------------------------|
| A. Rose | I. Twisted aestivation |
| B. Pea | II. Perigynous flower |
| C. Cotton | III. Drupe |
| D. Mango | IV. Marginal placentation |

Choose the correct answer from the options given below:

- (1) A-I, B-II, C-III, D-IV
(2) A-IV, B-III, C-II, D-I
(3) A-II, B-III, C-IV, D-I
(4) A-II, B-IV, C-I, D-III

150. Match List I with List II

- | List I | List II |
|-------------|--|
| A. GLUT-1 | I. Hormone |
| B. Insulin | II. Enzyme |
| C. Trypsin | III. Intercellular ground substance |
| D. Collagen | IV. Enables glucose Transport into cells |

Choose the correct answer from the options given below.

- (1) A-I, B-II, C-III, D-IV
(2) A-II, B-III, C-IV, D-I
(3) A-III, B-IV, C-I, D-II
(4) A-IV, B-I, C-II, D-III

Zoology : Section -A (Q. No. 151 to 185)

151. Match List I with List II

- | List I
(Sub Phases of Prophase I) | List II
(Specific characters) |
|--------------------------------------|--|
| A. Diakinesis | I. Synaptonemal complex formation |
| B. Pachytene | II. Completion of terminalisation of chiasmata |
| C. Zygotene | III. Chromosomes look like thin threads |
| D. Leptotene | IV. Appearance of recombination nodules |

Choose the correct answer from the options given below

- (1) A-I, B-II, C-IV, D-III
(2) A-II, B-IV, C-I, D-III
(3) A-IV, B-III, C-II, D-I
(4) A-IV, B-II, C-III, D-I

152. Consider the following statements

- A. Annelids are true coelomates
- B. Poriferans are pseudocoelomates
- C. Aschelminthes are acoelomates
- D. Platyhelminthes are pseudocoelomates

Choose the correct answer from the options given below

- (1) A only
- (2) C only
- (3) D only
- (4) B only

153. Match List I with List II :

List - I	List - II
A. Pons	I. Provides additional space for Neurons, regulates posture and balance
B. Hypothalamus	II. Controls respiration and gastric secretions
C. Medulla	III. Connects different regions of the brain
D. Cerebellum	IV. Neuro secretory cells

Choose the correct answer from the given below

- (1) A-III, B-IV, C-II, D-I
- (2) A-I, B-III, C-II, D-IV
- (3) A-II, B-I, C-III, D-IV
- (4) A-II, B-III, C-I, D-IV

154. Which of the following factors are favourable for the formation of oxygaemoglobin in alveoli?

- (1) High pO_2 and Lesser H^+ concentration
- (2) Low pCO_2 and High H^+ concentration
- (3) Low pCO_2 and High temperature
- (4) High pO_2 and High pCO_2

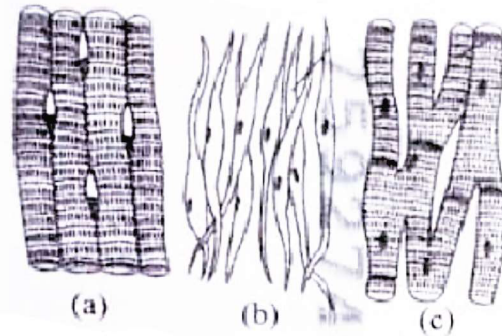
155. Following are the stages of cell division :

- A. Gap 2 phase
- B. Cytokinesis
- C. Synthesis phase
- D. Karyokinesis
- E. Gap 1 phase

Choose the correct sequence of stages from the options given below

- (1) E-B-D-A-C
- (2) B-D-E-A-C
- (3) E-C-A-D-B
- (4) C-E-D-A-B

156. Three types of muscles are given as a, b and c. Identify the correct matching pair along with their location in human body



Name of muscle / location

- (1) (a) Skeletal – Triceps
(b) Smooth – Stomach
(c) Cardiac – heart
- (2) (a) Skeletal – Biceps
(b) Involuntary – Intestine
(c) Smooth – Heart
- (3) (a) Involuntary – Nost tip
(b) Skeletal – Bone
(c) Cardiac – Heart
- (4) (a) Smooth – Toes
(b) Skeletal – Legs
(c) Cardiac – Heart

157. Match List I with List II

List I	List II
A. Down's syndrome	I. 11 th chromosome
B. α -Thalassemia	II. 'X' chromosome
C. β -Thalassemia	III. 21 st chromosome
D. Klinefelter's syndrome	IV. 16 th chromosome

Choose the correct answer from the options given below

- (1) A-II, B-III, C-IV, D-I
- (2) A-III, B-IV, C-I, D-II
- (3) A-IV, B-I, C-II, D-III
- (4) A-I, B-II, C-III, D-IV

158. Which of the following are Autoimmune disorders?

- A. Myasthenia gravis
- B. Rheumatoid arthritis
- C. Gout
- D. Muscular dystrophy
- E. Systemic Lupus Erythematosus (SLE)

Choose the most appropriate answer from the options given below

- (1) A, B & E only
- (2) B, C & E only
- (3) C, D & E only
- (4) A, B & D only

159. Given below are two statements : one is labelled as Assertion A and the other is labelled as Reason R

Assertion A : FSH acts upon ovarian follicles in female and Leydig cells in male.

Reason R : Growing ovarian follicles secrete estrogen in female while interstitial cells secrete androgen in male human being.

In the light of the above statements, choose the correct answer from the options given below

- (1) Both A and R are true but R is NOT the correct explanation of A
- (2) A is true but R is false
- (3) A is false but R is true
- (4) Both A and R are true and R is the correct explanation of A

160. Given below are two statements

Statement I : In the nephron, the descending limb of loop of Henle is impermeable to water and permeable to electrolytes.

Statement II : The proximal convoluted tubule is lined by simple columnar brush border epithelium and increases the surface area for reabsorption

In the light of the above statements, choose the correct answer from the options given below

- (1) Both Statement I and Statement II are false
- (2) Statement I is true but Statement II is false
- (3) Statement I is false but Statement II is true
- (4) Both Statement I and Statement II are true

161. Given below are two statements : one is labelled as Assertion A and the other is labelled as Reason R

Assertion A : Breast - feeding during initial period of infant growth is recommended by doctors for bringing a healthy baby.

Reason R : Colostrum contains several antibodies absolutely essential to develop resistance for the new born baby.

In the light of the above statements, choose the most appropriate answer from the options given below

- (1) Both A and R are correct but R is NOT the correct explanation of A
- (2) A is correct but R is not correct
- (3) A is not correct but R is correct
- (4) Both A and R are correct and R is the correct explanation of A

162. Match List I with List II

List I	List II
A. Cocaine	I. Effective sedative in surgery
B. Heroin	II. Cannabis sativa
C. Morphine	III. Erythroxylum
D. Marijuana	IV. Papaver somniferum

Choose the correct answer from the options given below

- (1) A-I, B-III, C-II, D-IV
- (2) A-II, B-I, C-III, D-IV
- (3) A-III, B-IV, C-I, D-II
- (4) A-IV, B-III, C-I, D-II

163. Match List I with List II

List I	List II
A. Pterophyllum	I. Hag fish
B. Myxine	II. Saw fish
C. Pristis	III. Angel fish
D. Exocoetus	IV. Flying fish

Choose the correct answer from the options given below

- (1) A-III, B-I, C-II, D-IV
- (2) A-IV, B-I, C-II, D-III
- (3) A-III, B-II, C-I, D-IV
- (4) A-II, B-I, C-III, D-IV

164. Match List I with List II

List I	List II
A. Pleurobrachia	I. Mollusca
B. Radula	II. Ctenophora
C. Stomochord	III. Osteichthyes
D. Air bladder	IV. Hemichordata

Choose the correct answer from the options given below

- (1) A-II, B-I, C-IV, D-III
- (2) A-II, B-IV, C-I, D-III
- (3) A-IV, B-III, C-II, D-I
- (4) A-IV, B-II, C-III, D-I

165. In both sexes of cockroach, a pair of jointed filamentous structures called anal cerci are present on

- (1) 10th segment
- (2) 8th and 9th segment
- (3) 11th segment
- (4) 5th segment

166. The flippers of the Penguins and Dolphins are the example of the

- (1) Natural selection
- (2) Convergent evolution
- (3) Divergent evolution
- (4) Adaptive radiation



167. Which of the following statements is incorrect ?

- (1) Most commonly used bio - reactors are of stirring type
- (2) Bio-reactors are used to produce small scale bacterial cultures
- (3) Bio-reactors have an agitator system, an oxygen delivery system and foam control system
- (4) A bio-reactor provides optimal growth conditions for achieving the desired product

168. Which one is the correct product of DNA dependent RNA polymerase to the given template?

3'TACATGGCAAATATCCATTCA5'

- (1) 5'AUGUAAAGUUUUAUAGGUAAGU3'
- (2) 5'AUGUACCGUUUUAUAGGGAAGU3'
- (3) 5'ATGTACCGTTTATAGGTAAGT3'
- (4) 5'AUGUACCGUUUUAUAGGUAAGU3'

169. Match List I with List II

List-I	List-II
A. Fibrous joints	I. Adjacent vertebrae, limited movement
B. Cartilaginous joints	II. Humerus and Pectoral girdle, rotational movement
C. Hinge joints	III. Skull, don't allow any movement
D. Ball and socket joints	IV. Knee, help in locomotion

Choose the correct answer from the options given below

- (1) A-I, B-III, C-II, D-IV
- (2) A-II, B-III, C-I, D-IV
- (3) A-III, B-I, C-IV, D-II
- (4) A-IV, B-II, C-III, D-I

170. Match List I with List II

List-I	List-II
A. α -1 antitrypsin	I. Cotton bollworm
B. Cry IAb	II. ADA deficiency
C. Cry IAc	III. Emphysema
D. Enzyme replacement therapy	IV. Corn borer

Choose the correct answer from the options given below

- (1) A-III, B-I, C-II, D-IV
- (2) A-III, B-IV, C-I, D-II
- (3) A-II, B-IV, C-I, D-III
- (4) A-II, B-I, C-IV, D-III

171. Match List I with List II

A. Axonemo	I. Centriole
B. Cartwheel pattern	II. Cilia and flagella
C. Crista	III. Chromosome
D. Satellite	IV. Mitochondria

Choose the correct answer from the options given below

- (1) A-IV, B-II, C-III, D-I
- (2) A-II, B-IV, C-I, D-III
- (3) A-II, B-I, C-IV, D-III
- (4) A-IV, B-III, C-II, D-I

172. Following are the stages of pathwya for conduction of an action potential through the heart

- A. AV bundle
- B. Purkinje fibres
- C. AV node
- D. Bundle branches
- E. SA node

Choose the correct sequence of pathway from the options given below

- (1) A-E-C-B-D
- (2) B-D-E-C-A
- (3) E-A-D-B-C
- (4) E-C-A-D-B

173. Given below are two statements

Statement I : The presence or absence of hymen is not a reliable indicator of virginity.

Statement II : The hymen is torn during the first coitus only

In the light of the above statements, choose the correct answer from the options given below

- (1) Both Statement I and Statement II are false
- (2) Statement I is true but Statement II is false
- (3) Statement I is false but Statement II is true
- (4) Both Statement I and Statement II are true

174. Match List I with List II

List I	List II
A. Common cold	I. Plasmodium
B. Haemozoin	II. Typhoid
C. Widal test	III. Rhinovirus
D. Allergy	IV. Dust mites

Choose the correct answer from the options given below

- (1) A-I, B-III, C-II, D-IV
- (2) A-III, B-I, C-II, D-IV
- (3) A-IV, B-II, C-III, D-I
- (4) A-II, B-IV, C-III, D-I



175. Match List I with List II

List I	List II
A. Typhoid	I. Fungus
B. Leishmaniasis	II. Nematode
C. Ringworm	III. Protozoa
D. Filariasis	IV. Bacteria

Choose the correct answer from the options given below

- (1) A-IV, B-III, C-I, D-II (2) A-III, B-I, C-IV, D-II
(3) A-II, B-IV, C-III, D-I (4) A-I, B-III, C-II, D-IV

176. Match List I with List II

List-I	List-II
A. Expiratory capacity	I. Expiratory reserve volume + Tidal volume + Inspiratory reserve volume
B. Functional residual capacity	II. Tidal volume + Expiratory reserve volume
C. Vital capacity	III. Tidal volume + Inspiratory reserve volume
D. Inspiratory capacity	IV. Expiratory reserve volume + Residual volume

Choose the correct answer from the options given below

- (1) A-III, B-II, C-IV, D-I
(2) A-II, B-I, C-IV, D-III
(3) A-I, B-III, C-II, D-IV
(4) A-II, B-IV, C-I, D-III

177. Which one of the following factors will not affect the Hardy-Weinberg equilibrium ?

- (1) Genetic drift
(2) Gene migration
(3) Constant gene pool
(4) Genetic recombination

178. Match List I with List II

List I	List II
A. Lipase	I. Peptide bond
B. Nuclease	II. Ester bond
C. Protease	III. Glycosidic bond
D. Amylase	IV. Phosphodiester bond

Choose the correct answer from the options given below

- (1) A-III, B-II, C-I, D-IV

- (2) A-II, B-IV, C-I, D-III
(3) A-IV, B-I, C-III, D-II
(4) A-IV, B-II, C-III, D-I

179. Which of the following is not a component of Fallopian tube ?

- (1) Isthmus
(2) Infundibulum
(3) Ampulla
(4) Uterine fundus

180. Match List I with List II

List I	List II
A. Non-medicated IUD	I. Multiload 375
B. Copper releasing IUD	II. Progestogens IUD
C. Hormone releasing IUD	III. Lippes loop
D. Implants	IV. LNG-20

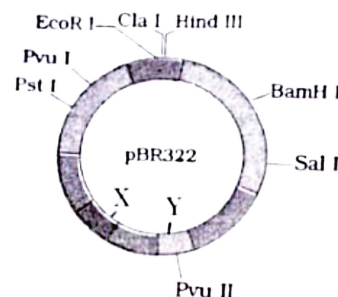
Choose the correct answer from the options given below

- (1) A-I, B-III, C-IV, D-II (2) A-IV, B-I, C-II, D-III
(3) A-III, B-I, C-IV, D-II (4) A-III, B-I, C-II, D-IV

181. Which of the following is not a steroid hormone?

- (1) Testosterone
(2) Progesterone
(3) Glucagon
(4) Cortisol

182. The following diagram showing restriction sites in E. coli cloning vector pBR322. Find the role of 'X' and 'Y' genes :



- (1) The gene 'X' is responsible for controlling the copy number of the linked DNA and 'Y' for protein involved in the replication of Plasmid
(2) The gene 'X' is for protein involved in replication of Plasmid and 'Y' for resistance to antibiotics
(3) Gene 'X' is responsible for recognition sites and 'Y' is responsible for antibiotic resistance
(4) The gene 'X' is responsible for resistance to antibiotics and 'Y' for protein involved in the replication of plasmid

183. Which of the following is not a natural / traditional contraceptive method ?

- (1) Periodic abstinence
- (2) Lactational amenorrhea
- (3) Vaults
- (4) Coitus interruptus

184. Given below are some stages of human evolution. Arrange them in correct sequence. (Past to Recent)

- A. Homo habilis
- B. Homo sapiens
- C. Homo neanderthalensis
- D. Homo erectus

Choose the correct sequence of human evolution from the options given below

- (1) B-A-D-C
- (2) C-B-D-A
- (3) A-D-C-B
- (4) D-A-C-B

185. The "Ti plasmid" of *Agrobacterium tumefaciens* stands for

- (1) Tumor independent plasmid
- (2) Tumor inducing plasmid
- (3) Temperature independent plasmid
- (4) Tumour inhibiting plasmid

Zoology : Section –B (Q. No. 186 to 200)

186. Match List I with List II

- | List I | List II |
|---------------------------------|------------------|
| A. RNA polymerase III | I. snRNPs |
| B. Termination of transcription | II. Promotor |
| C. Splicing of Exons | III. Rho factor |
| D. TATA box | IV. SnRNAs, tRNA |

Choose the correct answer from the options given below

- (1) A-III, B-II, C-IV, D-I
- (2) A-III, B-IV, C-I, D-II
- (3) A-IV, B-III, C-I, D-II
- (4) A-I, B-III, C-IV, D-II

187. Regarding catalytic cycle of an enzyme action, select the correct sequential steps :

- A. Substrate enzyme complex formation.
- B. Free enzyme ready to bind with another substrate.
- C. Release of products
- D. Chemical bonds of the substrate broken
- E. Substrate binding to active site.

Choose the correct answer from the options given below

- (1) A,E,B,D,C
- (2) B,A,C,D,E
- (3) E,D,C,B,A
- (4) E,A,D,C,B

188. Choose the correct statement given below regarding juxta medullary nephron. :

- (1) Renal corpuscle of juxta medullary nephron lies in the outer portion of the medulla.
- (2) Loop of henle of juxta medullary nephron runs deep into medulla.
- (3) Juxta medullary nephrons outnumber the cortical nephrons.
- (4) juxta medullary nephrons are located in the columns of Bertini.

189. Given below are two statements :

Statement I : Mitochondria and chloroplasts are both double membrane bound organelles.

Statement II : Inner membrane of mitochondria is relatively less permeable, as compared to chloroplast.

In the light of the above statements, choose the most appropriate answer from the options given below :

- (1) Both statement I and statement II are incorrect
- (2) Statement I is correct but statement II is incorrect
- (3) Statement I is incorrect but statement II is correct
- (4) Both statement I and statement II are correct.

190. Given below are two statements :

Statement - I : Gause's competitive exclusion principle states that two closely related species competing for different resources cannot exist indefinitely.

Statement - II : According to Gause's principle, during competition, the inferior will be eliminated. This may be true if resources are limiting.

In the light of the above statements, choose the correct answer from the options given below

- (1) Both Statement I and Statement II are false
- (2) Statement I is true but Statement II is false
- (3) Statement I is false but Statement II is true
- (4) Both Statement I and Statement II are true

191. The following are the statements about non-chordates :

- A. Pharynx is perforated by gill slits.
- B. Notochord is absent
- C. Central nervous system is dorsal
- D. Heart is dorsal if present
- E. Post anal tail is absent

Choose the most appropriate answer from the options given below

- (1) A, B & D only
- (2) B, D & E only
- (3) B, C & D only
- (4) A & C only



192. Match List I with List II

- | List I | List II |
|------------------------|--|
| A. Exophthalmic goitre | I. Excess secretion of cortisol, moon face & hyperglycemia |
| B. Acromegaly | II. Hypo-secretion of thyroid hormone and stunted growth |
| C. Cushing's syndrome | III. Hyper secretion of thyroid hormone & protruding eye balls |
| D. Cretinism | IV. Excessive secretion of growth hormone. |

Choose the correct answer from the options given below

- (1) A-IV, B-II, C-I, D-III (2) A-III, B-IV, C-II, D-I
(3) A-III, B-IV, C-I, D-II (4) A-I, B-III, C-II, D-IV

193. Match List I with List II

- | List I | List II |
|--------------------|------------------------|
| A. Mesozoic Era | I. Lower invertebrates |
| B. Proterozoic Era | II. Fish & Amphibia |
| C. Cenozoic Era | III. Birds & Reptiles |
| D. Paleozoic Era | IV. Mammals |

Choose the correct answer from the options given below

- (1) A-III, B-I, C-II, D-IV
(2) A-I, B-II, C-IV, D-III
(3) A-III, B-I, C-IV, D-II
(4) A-II, B-I, C-III, D-IV

194. Match List I with List II :

- | List I | List II |
|---------------------------------------|---------------------------------------|
| A. Unicellular glandular epithelium | I. Salivary glands |
| B. Compound epithelium | II. Goblet cells of alimentary canal |
| C. Multicellular glandular epithelium | III. Goblet cells of alimentary canal |
| D. Endocrine glandular epithelium | IV. Moist surface of buccal cavity |

Choose the correct answer from the options given below

- (1) A - IV, B - III, C - I, D - II
(2) A - III, B - IV, C - I, D - II
(3) A - II, B - I, C - IV, D - III
(4) A - II, B - I, C - III, D - IV

195. As per ABO blood grouping system, the blood group of father is B⁺, mother is A⁺ and child is O⁺. Their respective genotype can be :

- A. I^Bi/I^Ai/ii B. I^BI^B/I^AI^A/ii
C. I^AI^B/iI^A/I^Bi D. I^Ai/I^Bi/I^Ai
E. ii/I^B/iI^A/I^AI^B

Choose the correct answer from the options given below :

- (1) B Only
(2) C & B only
(3) D & E only
(4) A only

196. Match List I with List II related to digestive system of cockroach.

- | List I | List II |
|---|-------------------------|
| A. The structures For storing of food | I. Gizzard |
| B. Ring of 6-8 blind tubules at junction of Foregut and midgut | II. Gastric Caeca |
| C. Ring of 100-150 yellow coloured thin filaments at junction of midgut and hindgut | III. Malpighian tubules |
| D. The structures used for grinding the food | IV. Crop |

Choose the correct answer from the options given below :

- (1) A-I, B-II, C-III, D-IV
(2) A-IV, B-III, C-II, D-I
(3) A-III, B-II, C-IV, D-I
(4) A-IV, B-II, C-III, D-I

197. Given below are two statements :

Statement I : Bone marrow is the main lymphoid organ where all blood cells including lymphocytes are produced

Statement II : Both bone marrow and thymus provide micro environments for the development and maturation of T- lymphocytes.

In the light of the above statements, choose the most appropriate answer from the options given below :

- (1) Both Statement I and statement II are incorrect
(2) Statement I is correct but statement II is incorrect
(3) Statement I is incorrect but statement II is correct
(4) Both statement I and statement II are correct



198. Given below are two statements :

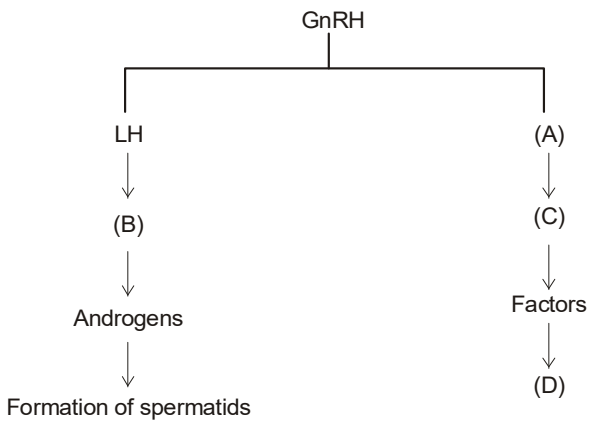
Statement I : The cerebral hemispheres are connected by nerve tract known as corpus callosum.

Statement II : The brain stem consists of the medulla oblongata, pons and cerebrum.

In the light of the above statements, choose the most appropriate answer from the options given below :

- (1) Both Statement I and statement II are incorrect
- (2) Statement I is correct but statement II is incorrect
- (3) Statement I is incorrect but statement II is correct
- (4) Both statement I and statement II are correct

199. Identify the correct option (A), (B), (C), (D) with respect to spermatogenesis :



- (1) ICSH, Interstitial cells, Leyding cells, spermiogenesis
- (2) FSH, Sertoli cells, Leydig cells, spermatogenesis
- (3) ICSH, Leydig cells, Sertoli cells, spermatogenesis
- (4) FSH, Leyding cells, Sertoli cells, Spermiogenesis

200. Match List I with List II :

List I	List II
A. P wave	I. Heart muscles are electrically silent
B. QRS complex	II. Depolarisation of ventricles
C. T wave	III. Depolarisation of atria
D. T-P gap	IV. Repolarisation of ventricles.

Choose the correct answer from the options given below :

- (1) A - III, B - II, C - IV, D - I
- (2) A - II, B - III, C - I, D - IV
- (3) A - IV, B - II, C - I, D - III
- (4) A - I, B - III, C - IV, D - II